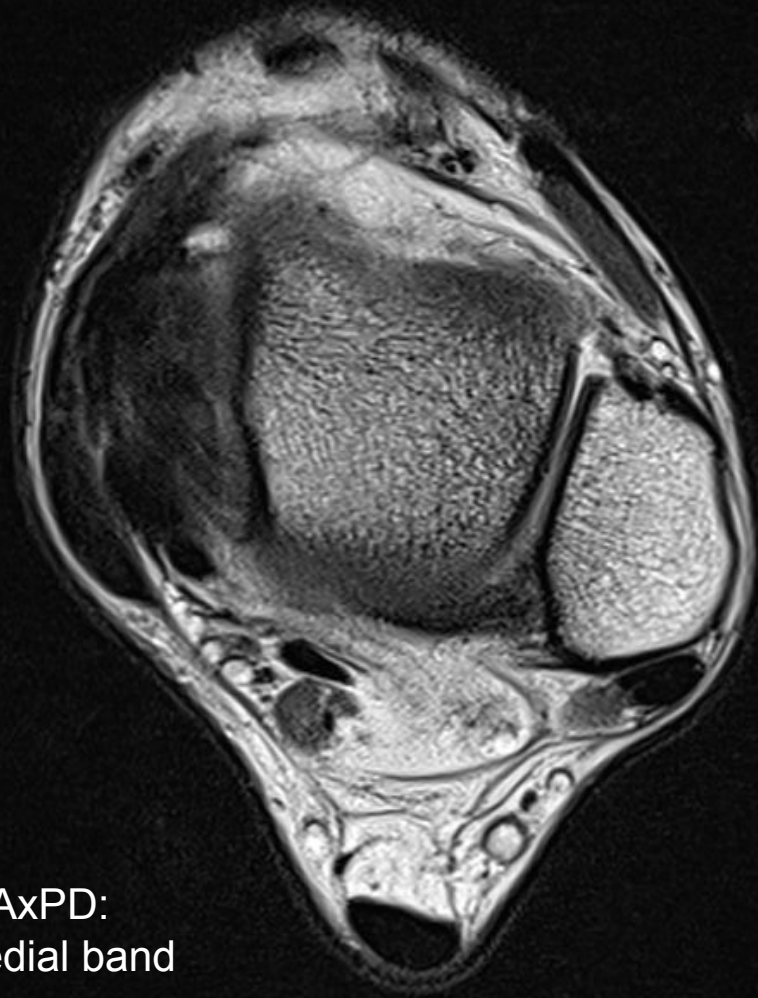
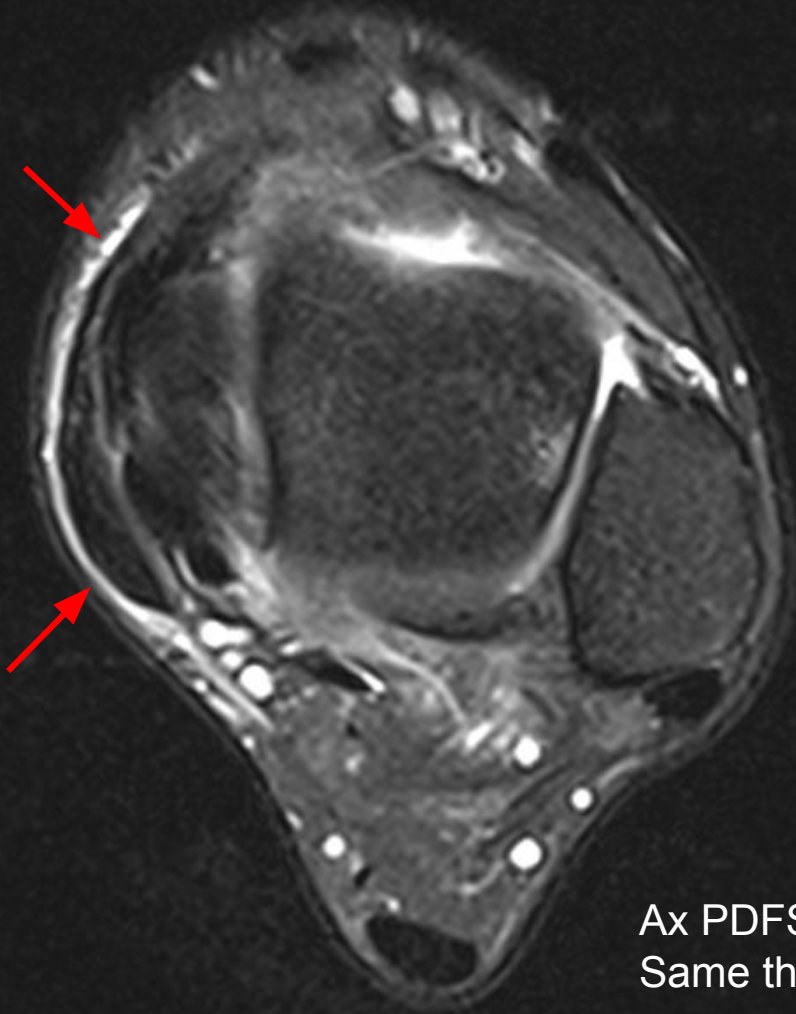
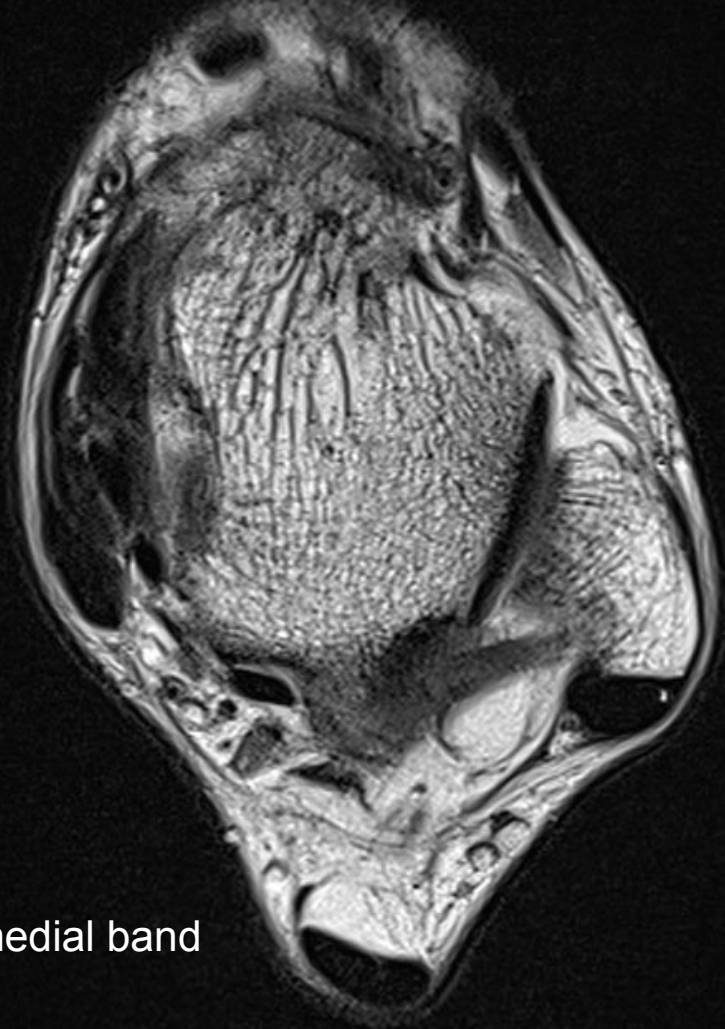
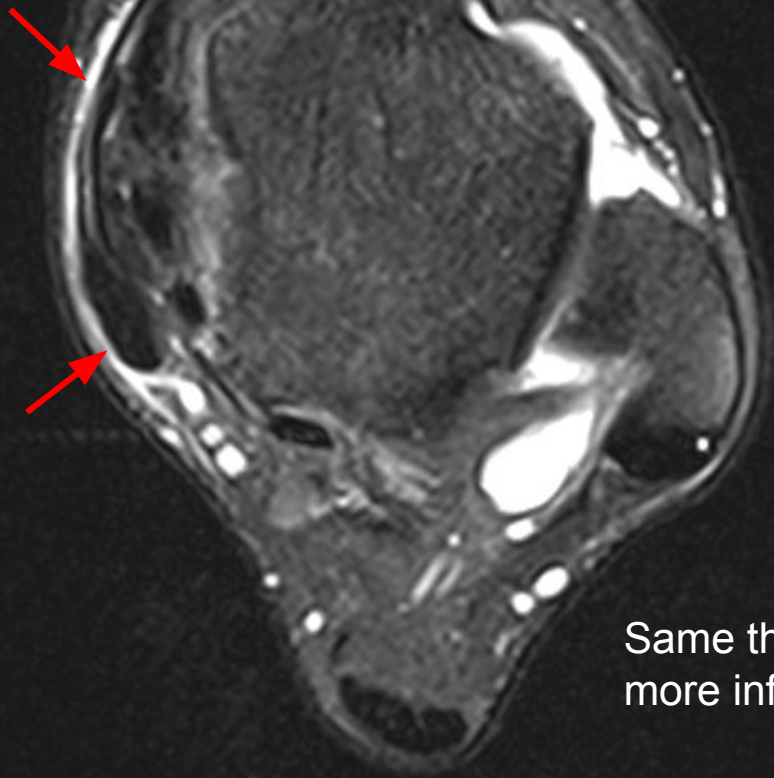


Thick medial band contiguous with the retinaculum. Also, edema in the deep deltoid complex

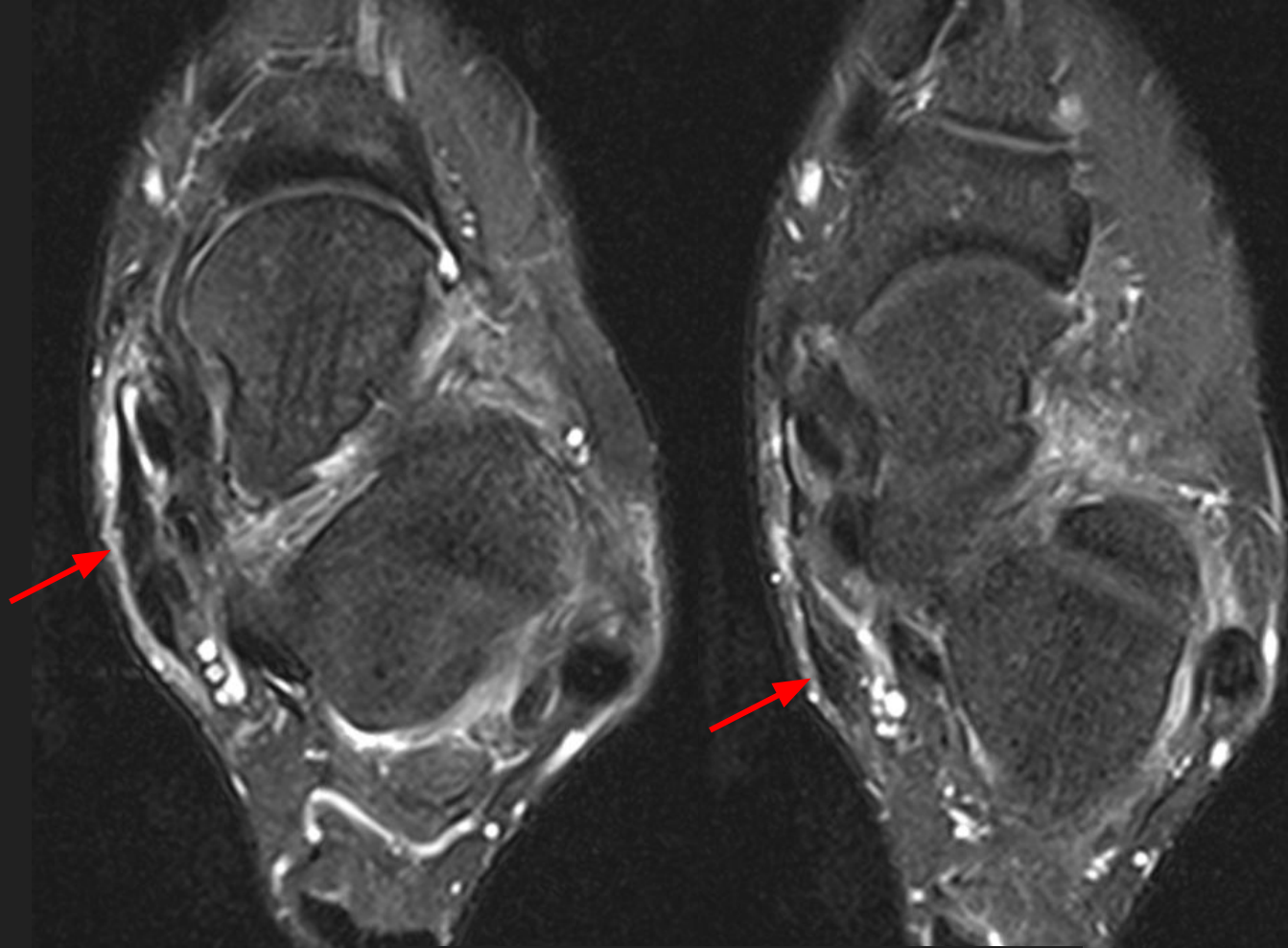
PD and PD FS



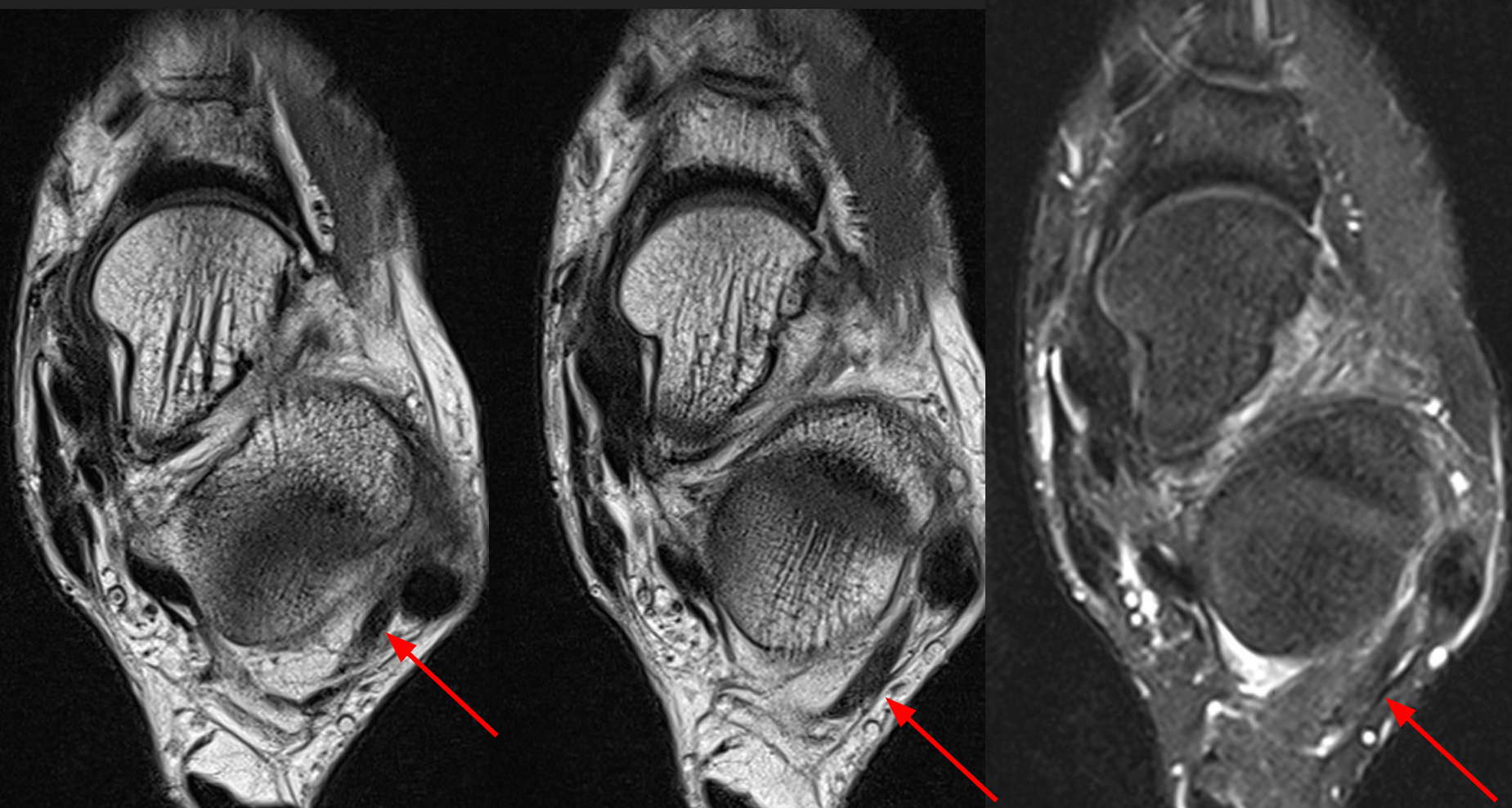
Ax PDFS and AxPD:  
Same thick medial band



Same thick medial band  
more inferior



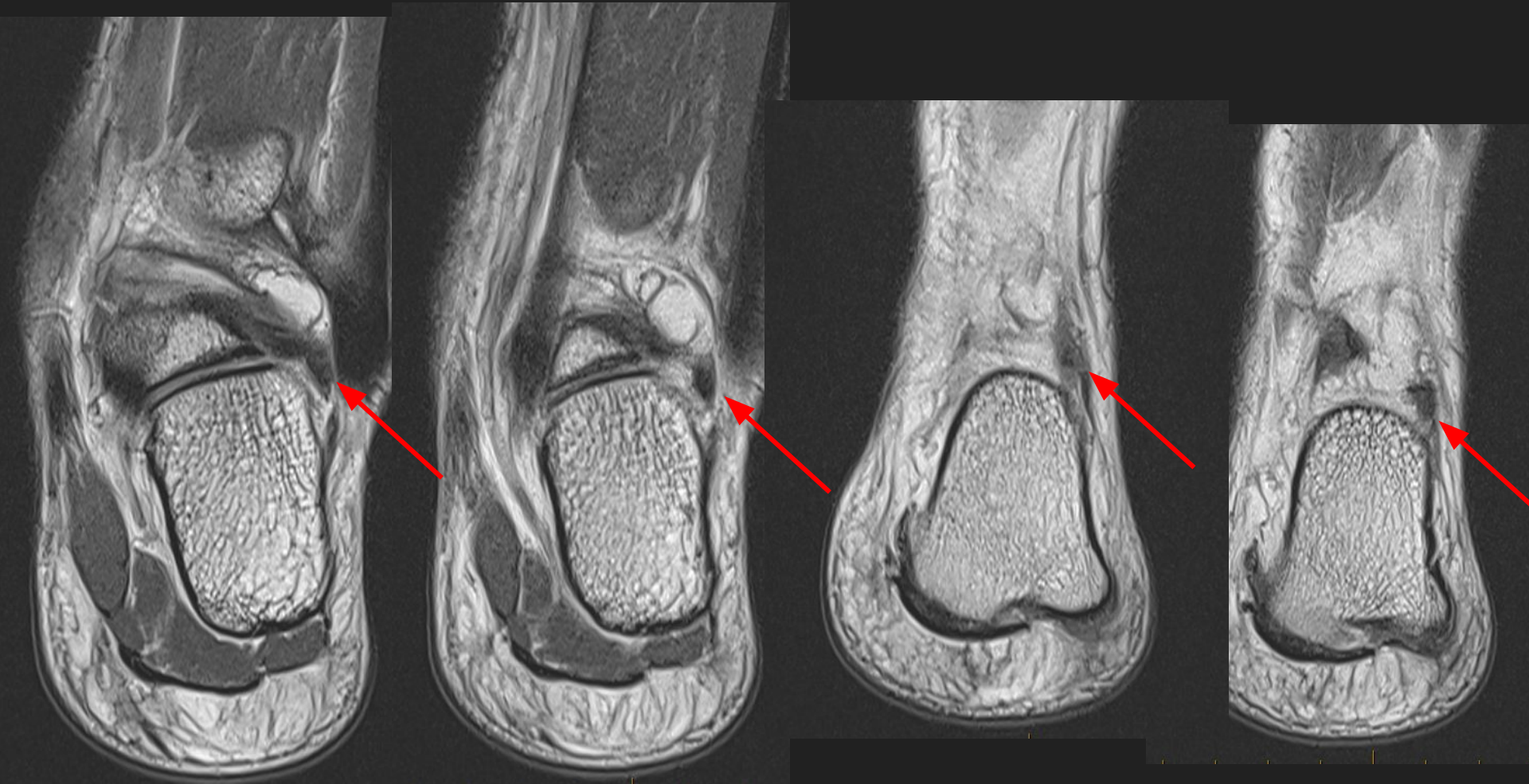
More inferior: same thick medial band



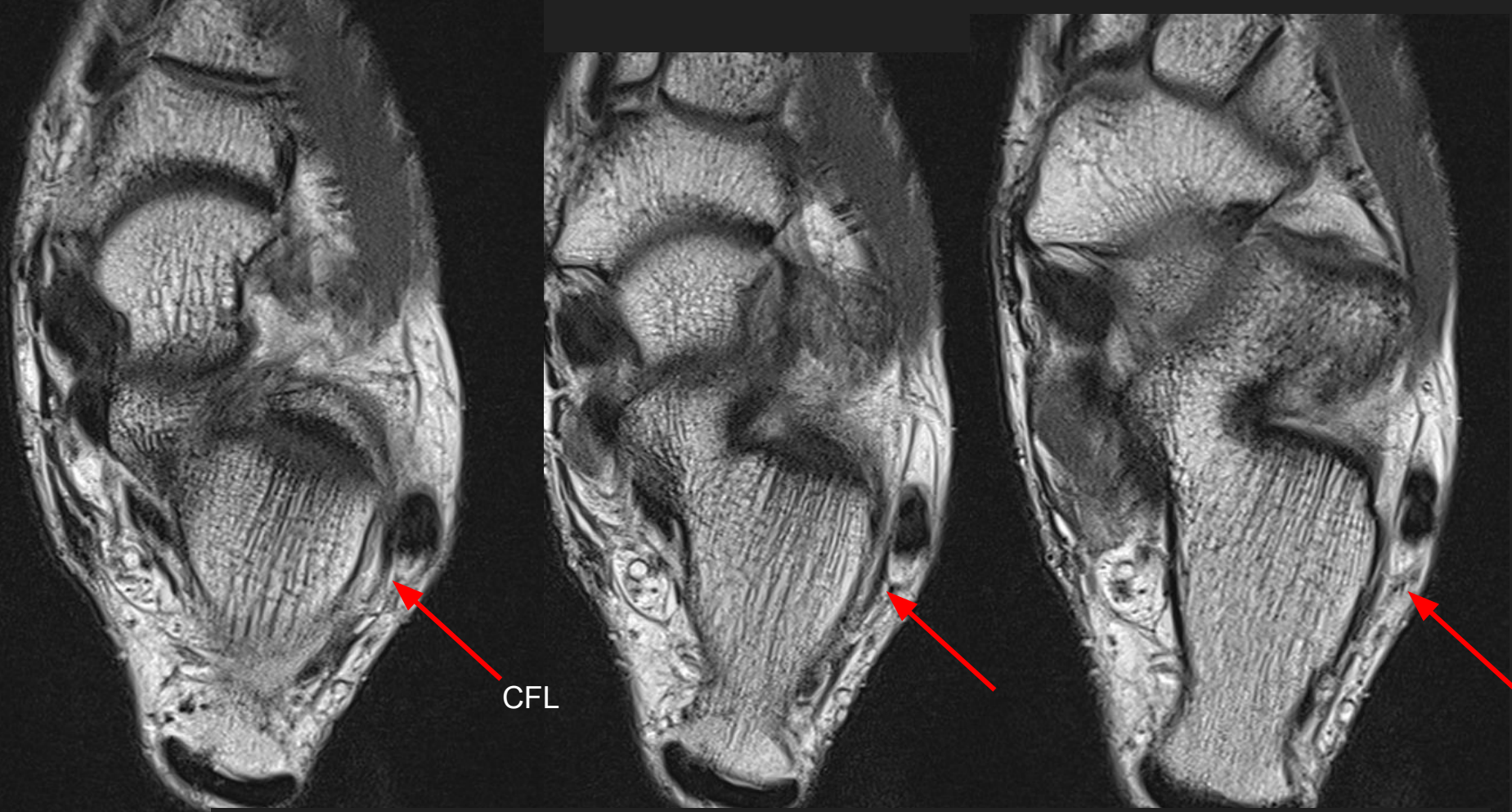
Ax PD: Additional thickened band laterally, just superior to the CFL



Same band attaching to the peroneal retinaculum



Cor PD: Same band anterior to posterior



Just inferior is the normal CFL