

POPLITEOFIBULAR LIG.

ROUND 2

OFFERED BY THIS PAPER



Int. J. Morphol.,
35(1):62-71, 2017.

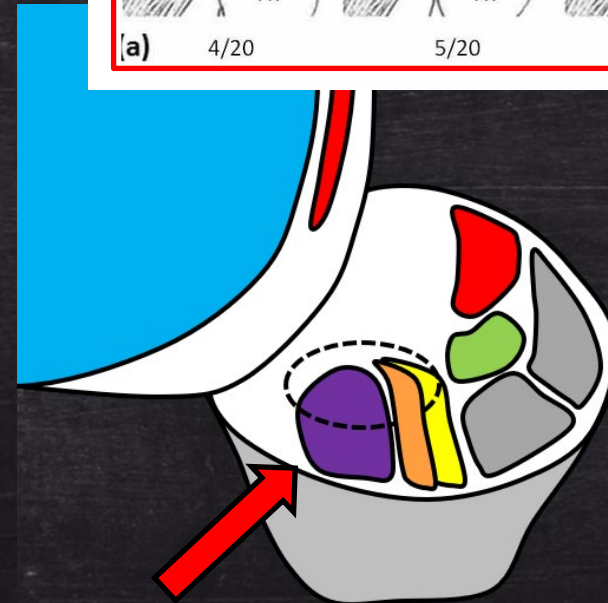
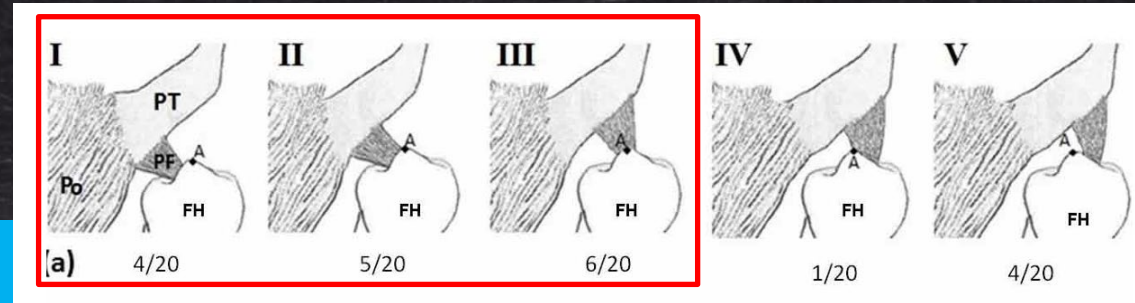
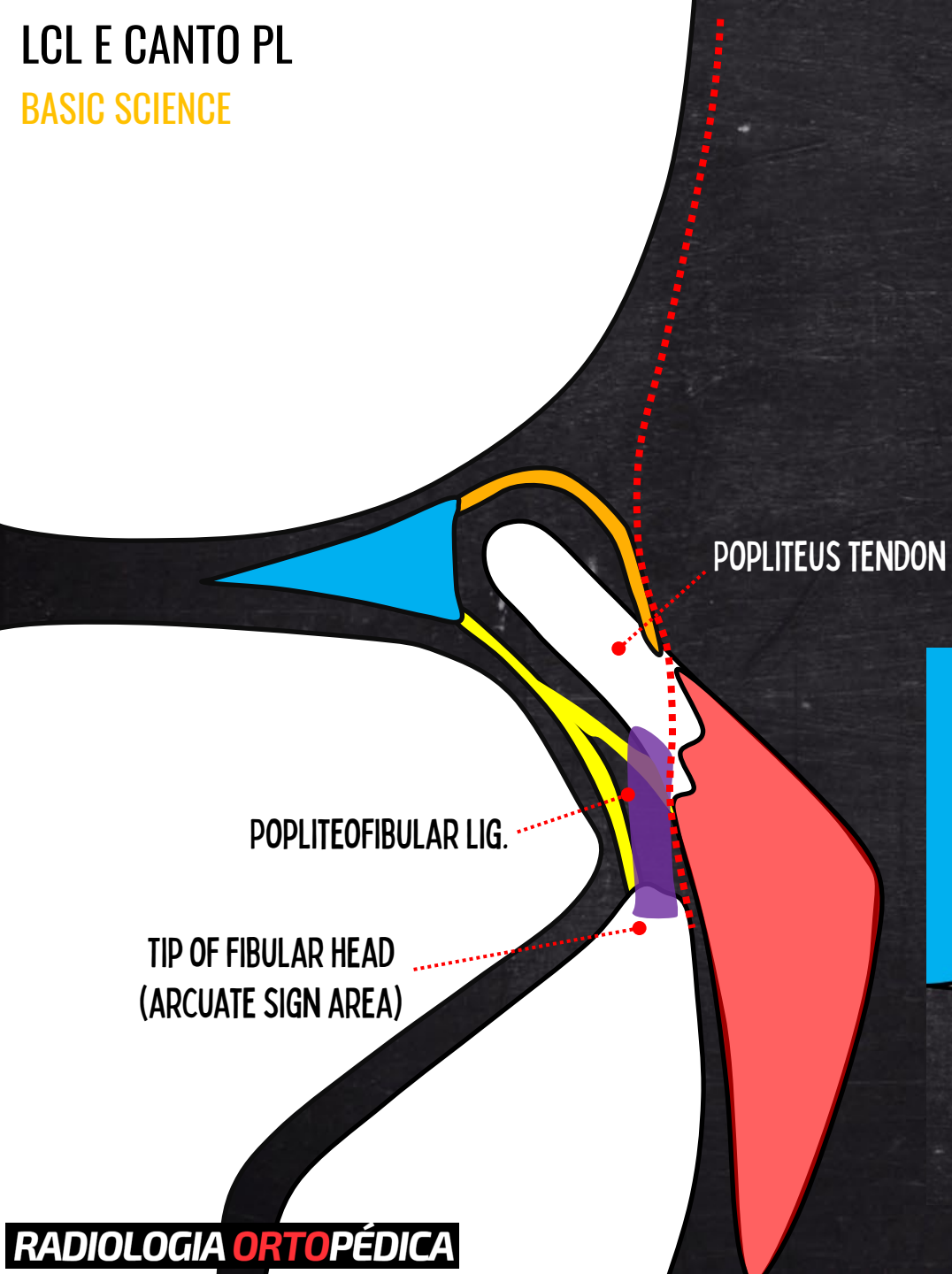
Morphological Features of the Popliteus Tendon, Popliteofibular and Lateral (Fibular) Collateral Ligaments

Características Morfológicas del Tendón del Músculo Poplíteo,
y Ligamentos Popliteofibular y Colateral Fibular

Zeliha Kurtoglu¹; Özlem Elvan¹; Mustafa Aktekin² & Mehmet Çolak³

KURTOGLU, Z.; ELVAN, O; AKTEKIN, M. & ÇOLAK, M. Morphological features of the popliteus tendon, popliteofibular and lateral (fibular) collateral ligaments. *Int. J. Morphol.*, 35(1):62-71, 2017.

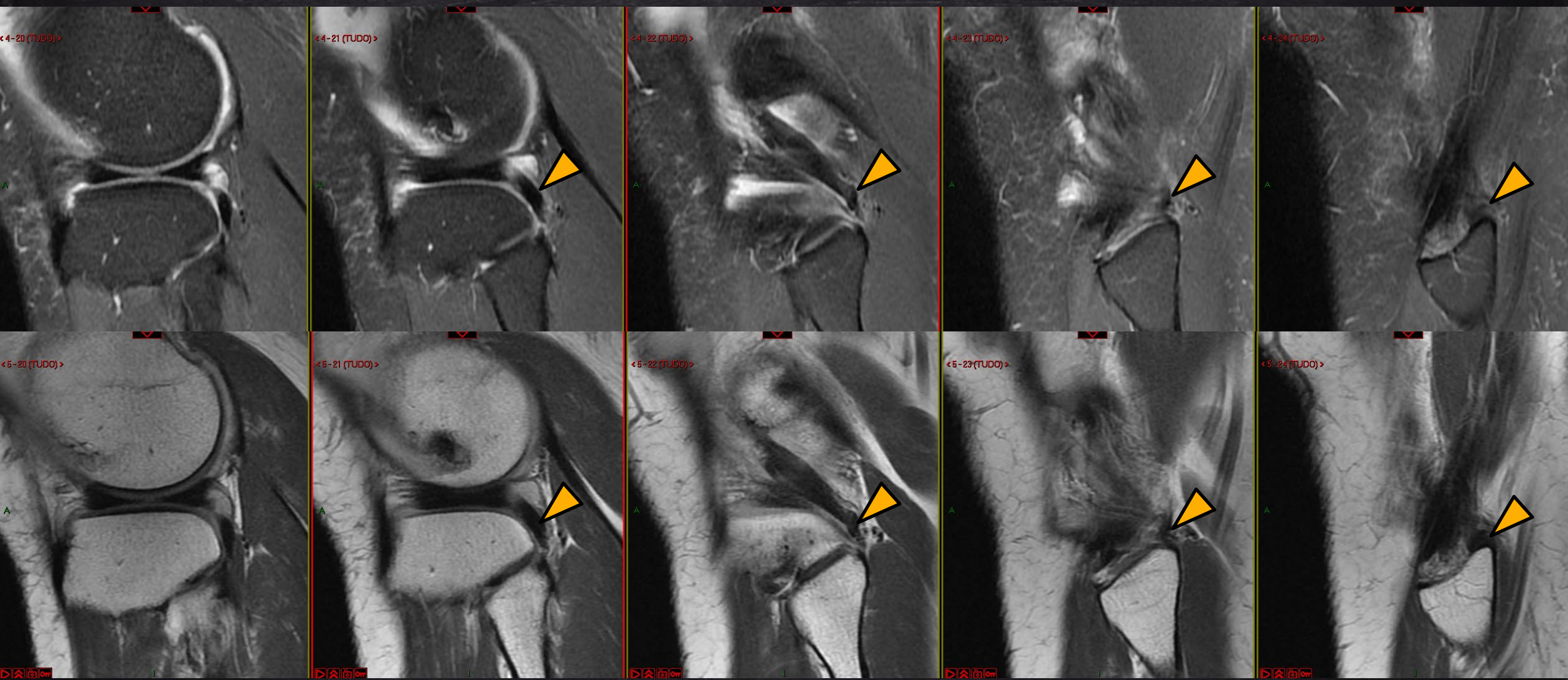
ACORDING TO THE PAPER, THERE IS SOME ANATOMIC VARIATION AT THE POPLITEOFIBULAR LIG. INSERTION



IN **75%** OF CASES THE PF INSERTION IS AT THE REGION THAT WE ARE USED TO KNOW, AT THE APEX/POSTERIOR SLOPE OF THE FIBULAR HEAD

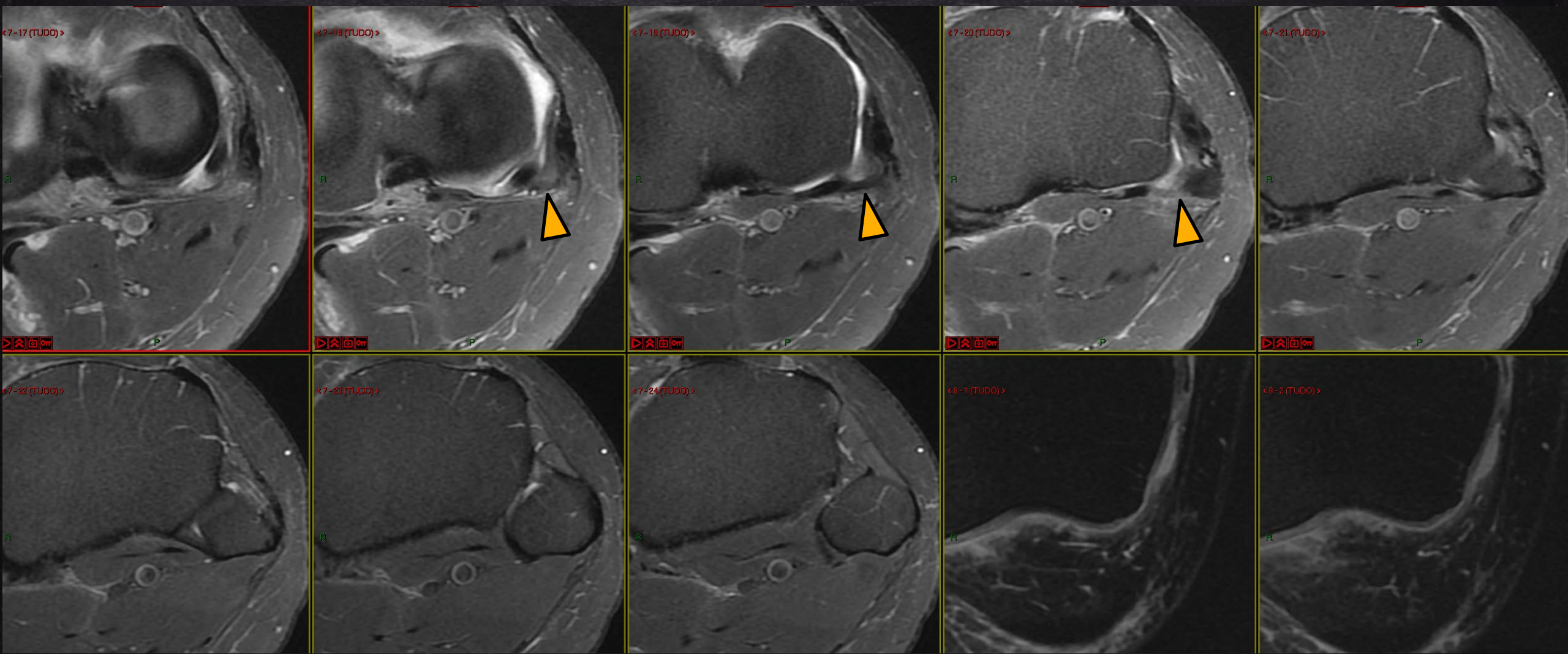
LCL E CANTO PL
POPLITEOFIBULAR LIG.

MOST COMMON SITE OF PF LIG. INSERTION (APEX / POST. SLOPE)



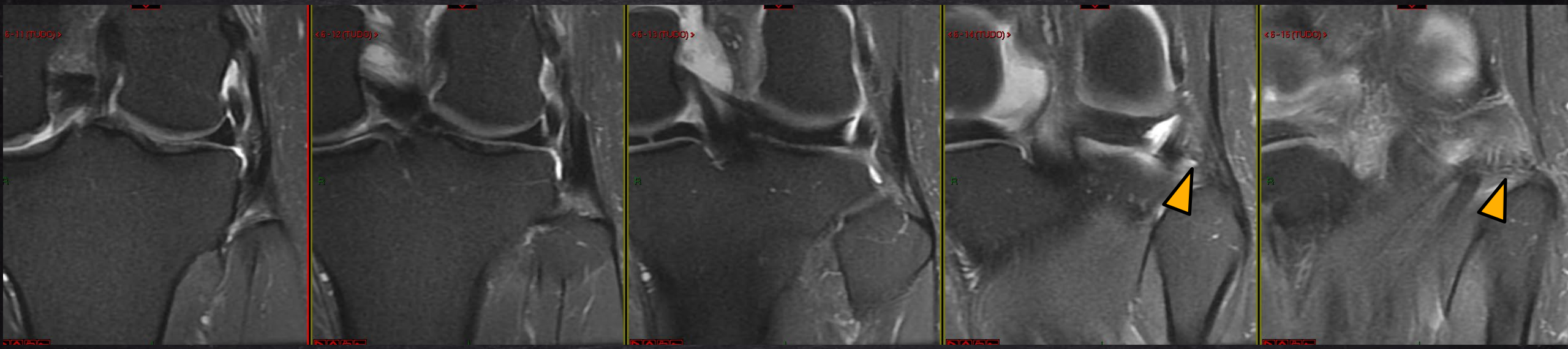
LCL E CANTO PL
POPLITEOFIBULAR LIG.

MOST COMMON SITE OF PF LIG. INSERTION (APEX / POST. SLOPE)



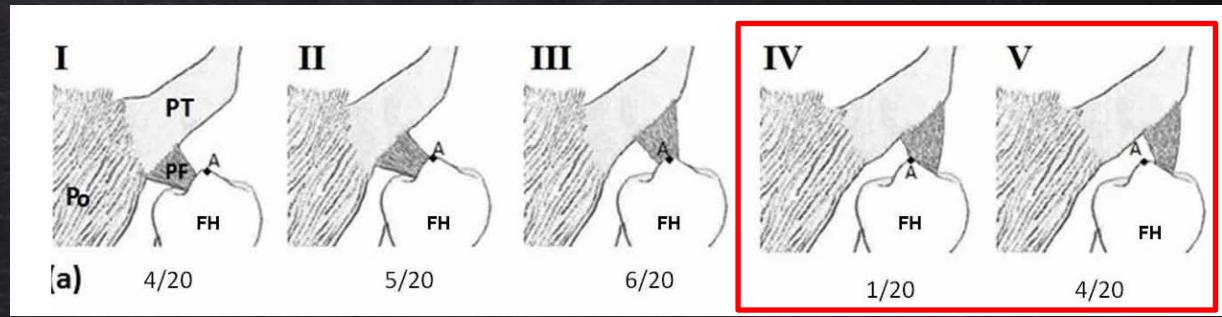
LCL E CANTO PL
POPLITEOFIBULAR LIG.

MOST COMMON SITE OF PF LIG. INSERTION (APEX / POST. SLOPE)



LCL E CANTO PL

BASIC SCIENCE

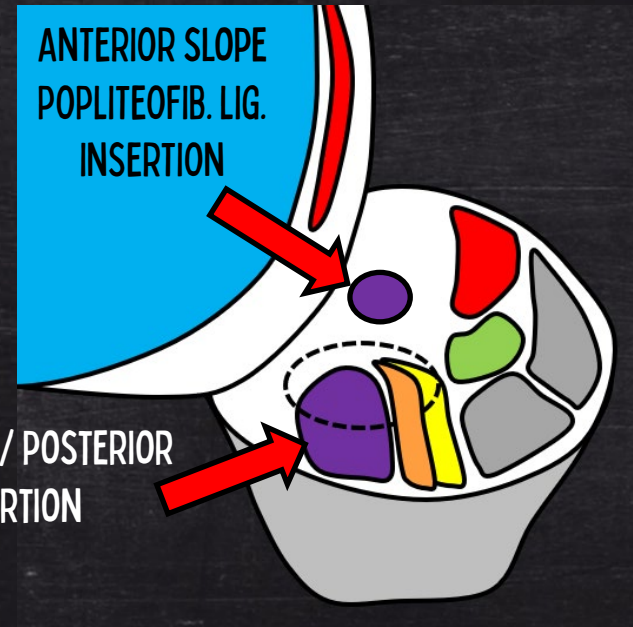


IN **25%** OF CASES THE INSERTION IS AT THE ANTERIOR SLOPE OF THE FIBULAR HEAD

POPLITEUS TENDON

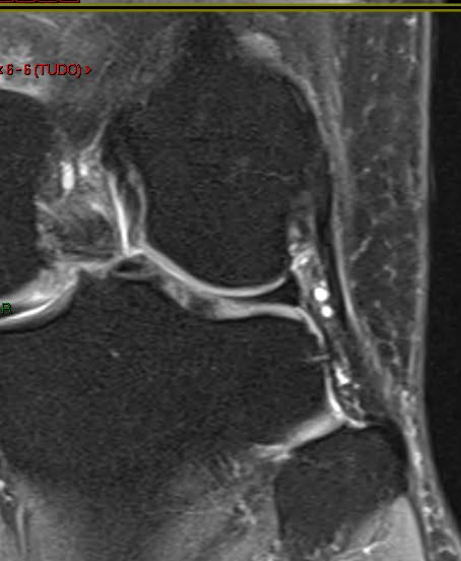
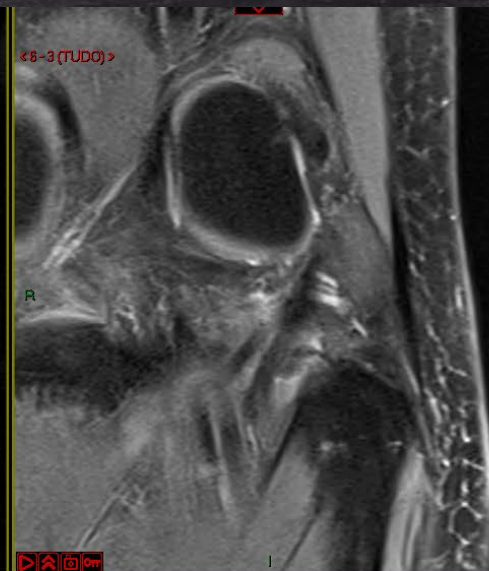
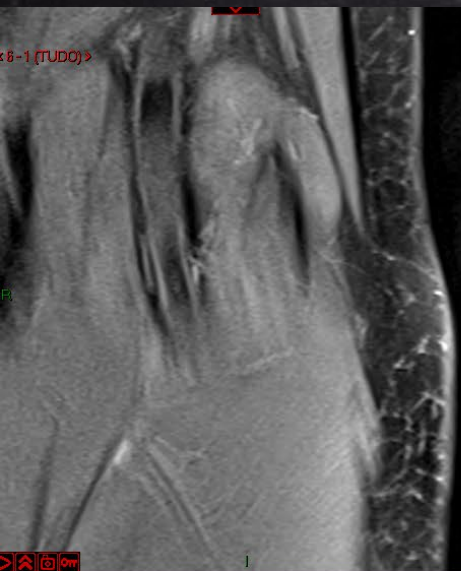
POPLITEOFIBULAR LIG.

**POPLITEOFIB. LIG.
ANTERIOR SLOPE INSERTION**



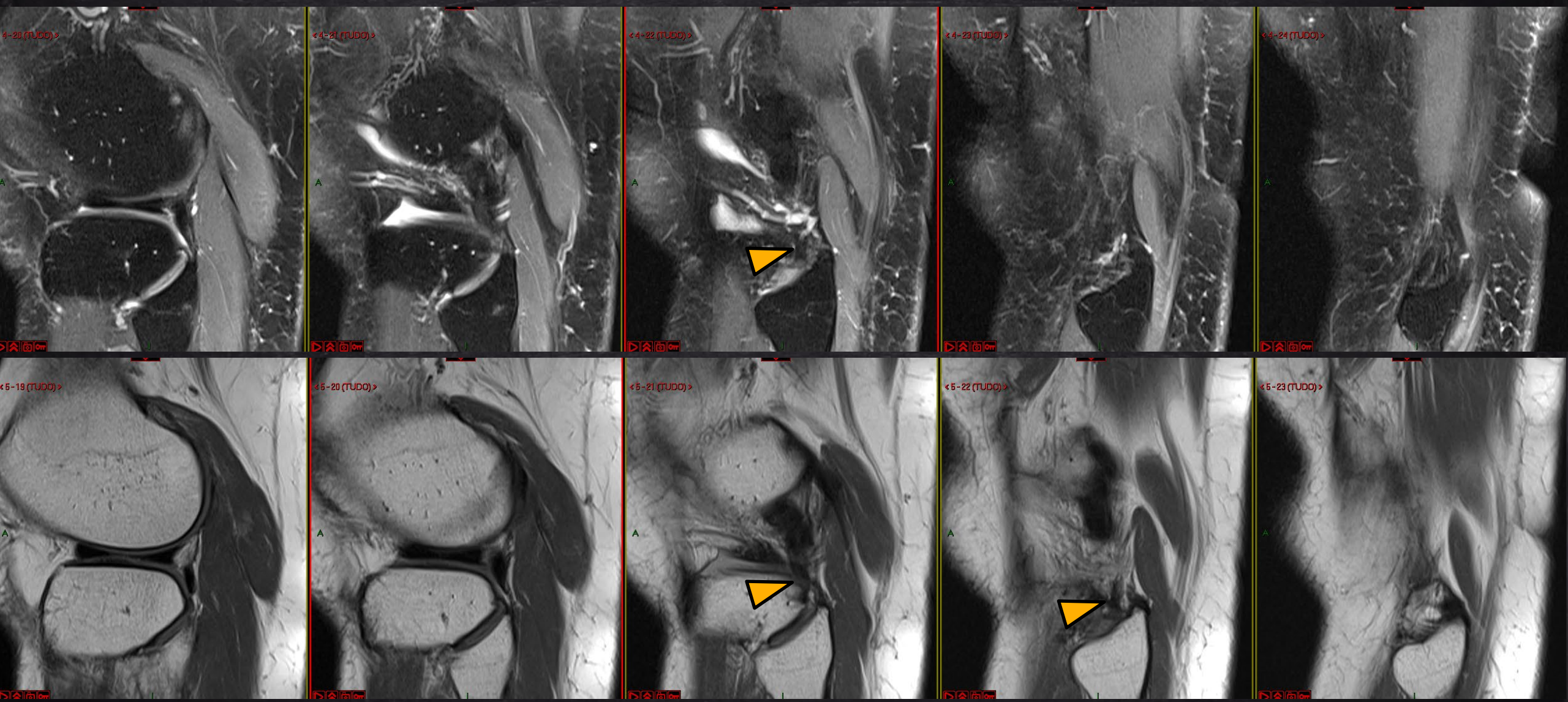
LCL E CANTO PL
POPLITEOFIBULAR LIG.

PF LIG. ANTERIOR SLOPE INSERTION (ANATOMIC VARIATION)



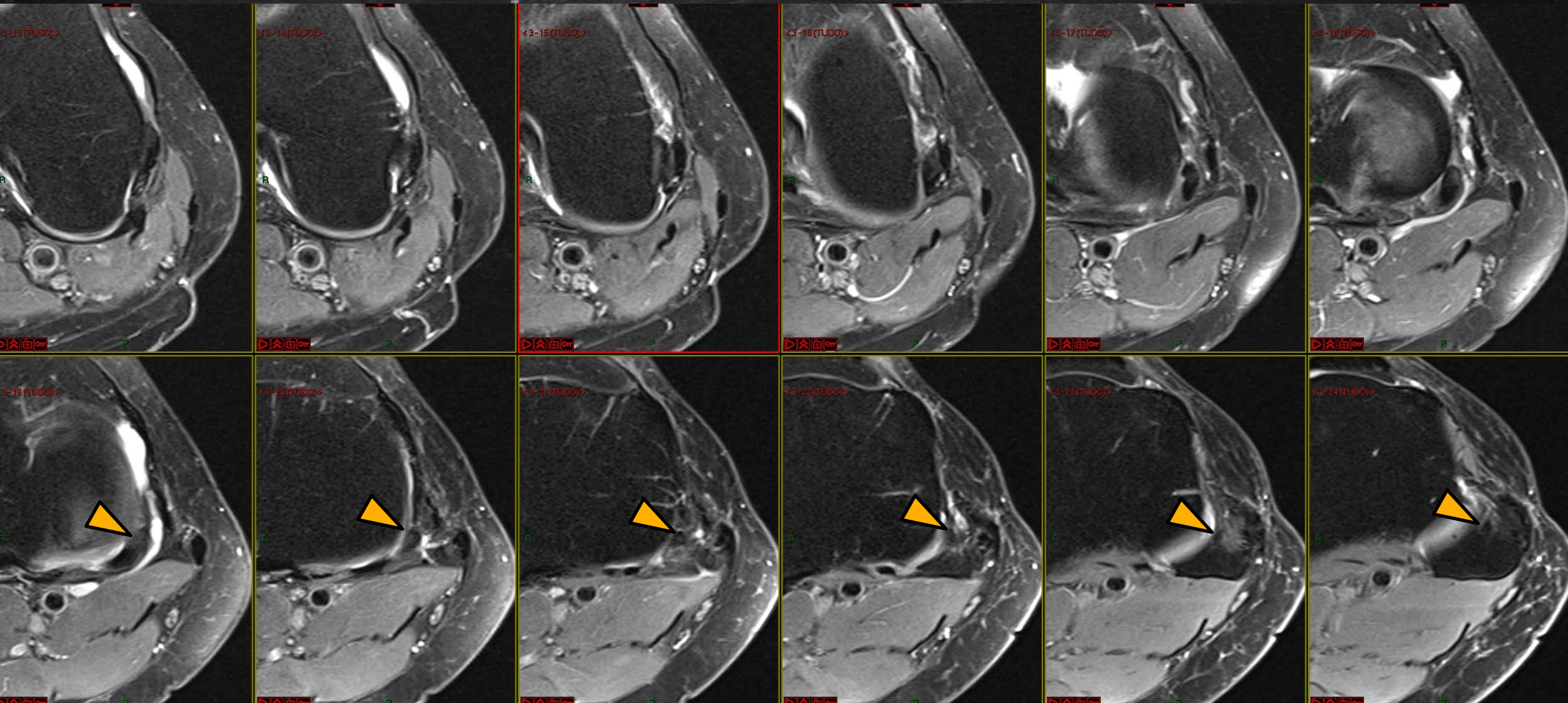
LCL E CANTO PL
POPLITEOFIBULAR LIG.

PF LIG. ANTERIOR SLOPE INSERTION (ANATOMIC VARIATION)



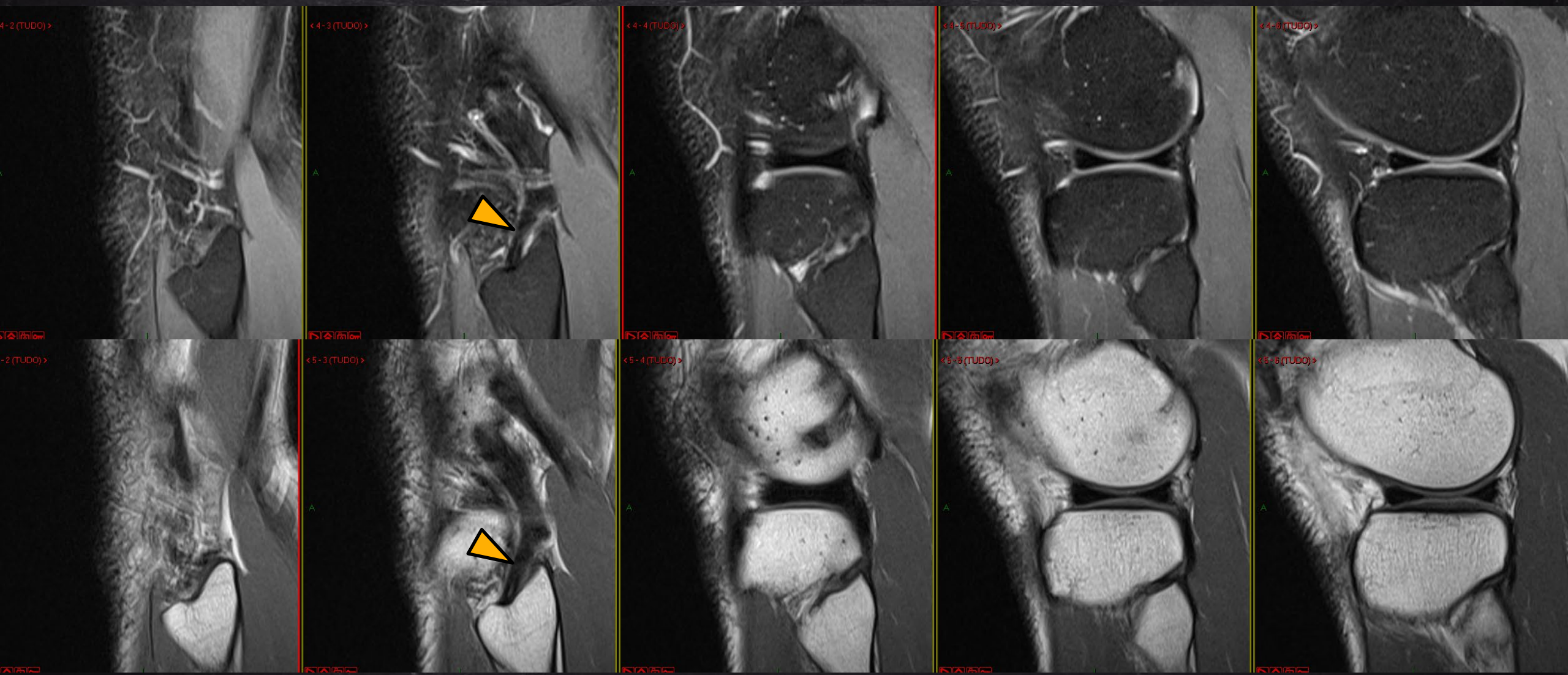
LCL E CANTO PL
POPLITEOFIBULAR LIG.

PF LIG. ANTERIOR SLOPE INSERTION (ANATOMIC VARIATION)



LCL E CANTO PL
POPLITEOFIBULAR LIG.

PF LIG. ANTERIOR SLOPE INSERTION (ANATOMIC VARIATION)



LCL E CANTO PL
POPLITEOFIBULAR LIG.

PF LIG. ANTERIOR SLOPE INSERTION (ANATOMIC VARIATION)

