

NEUROPATHY

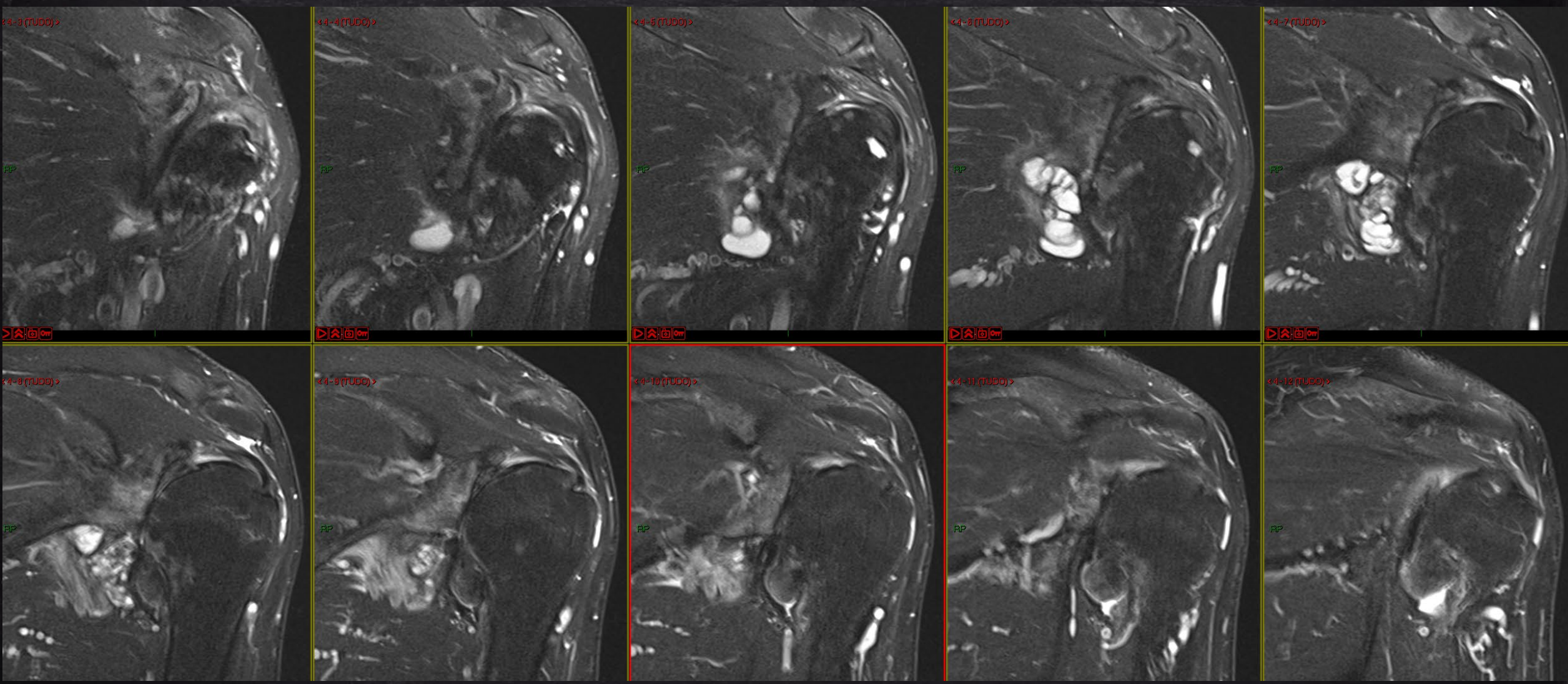
QUADRILATERAL SPACE

# CASE 1

# NEUROPATHY

## QUADRILATERAL SPACE

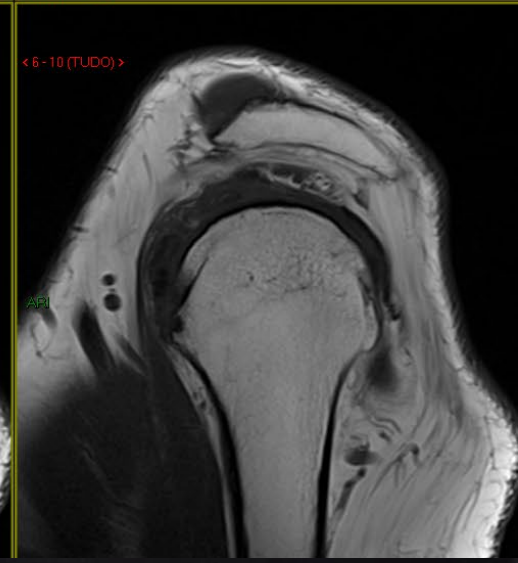
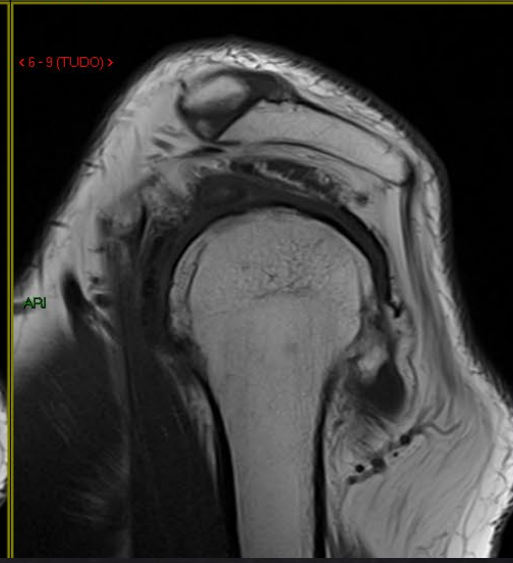
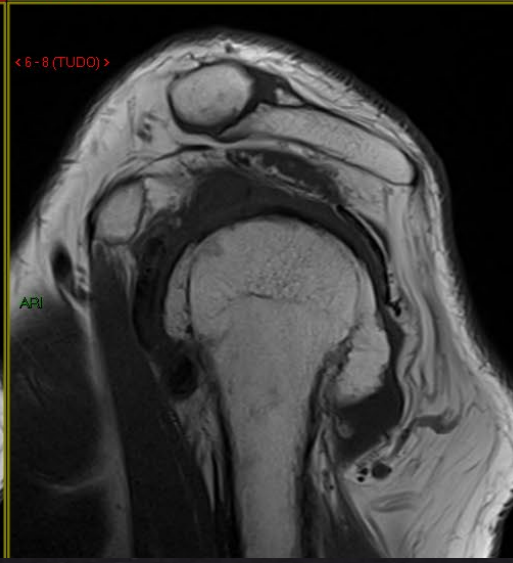
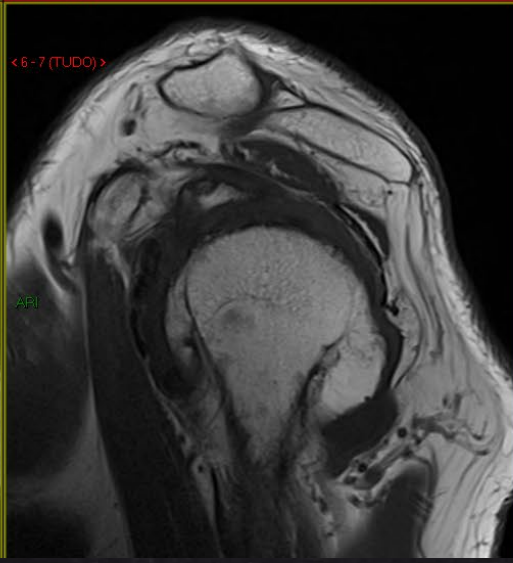
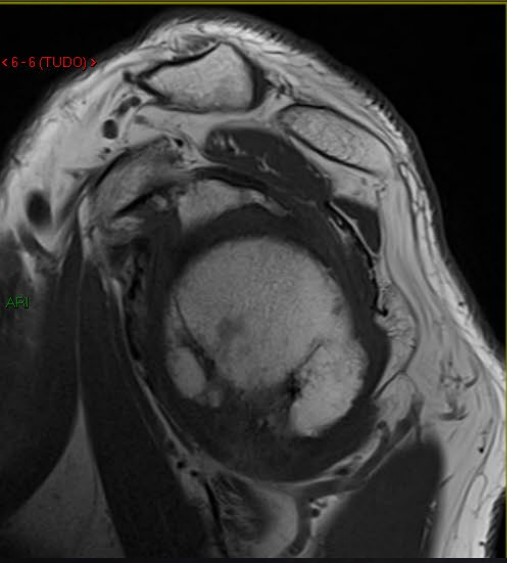
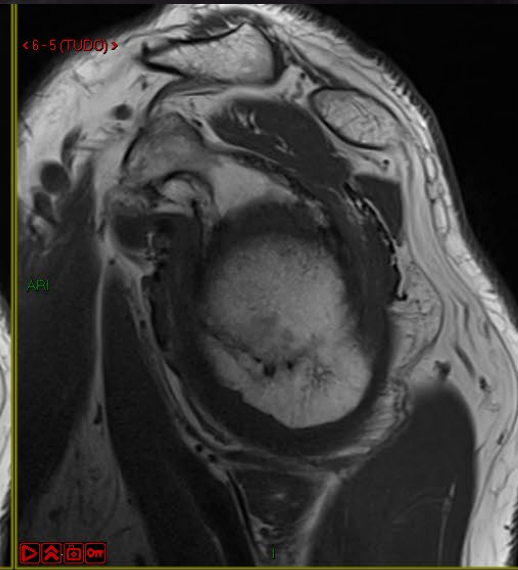
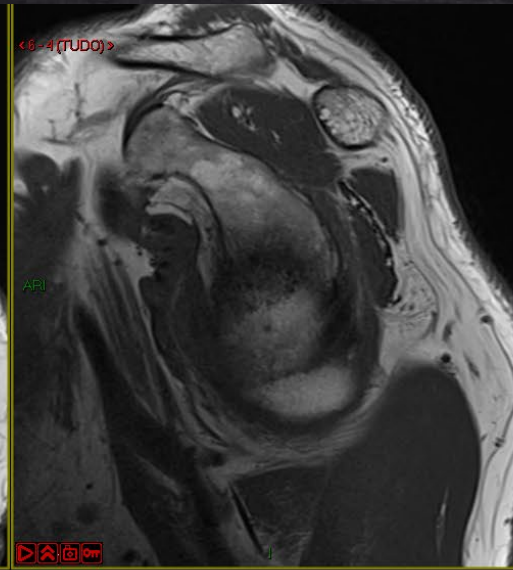
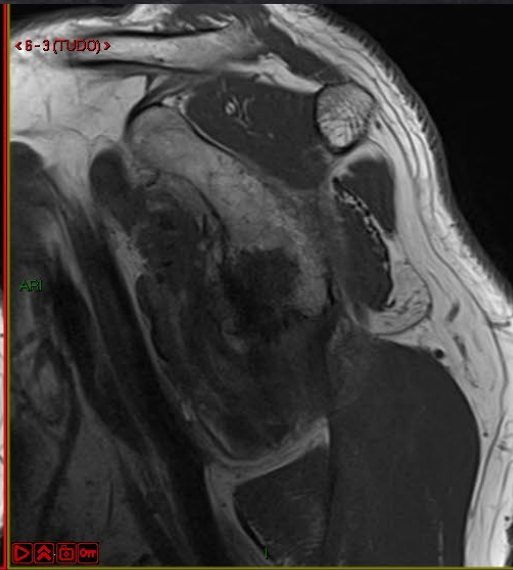
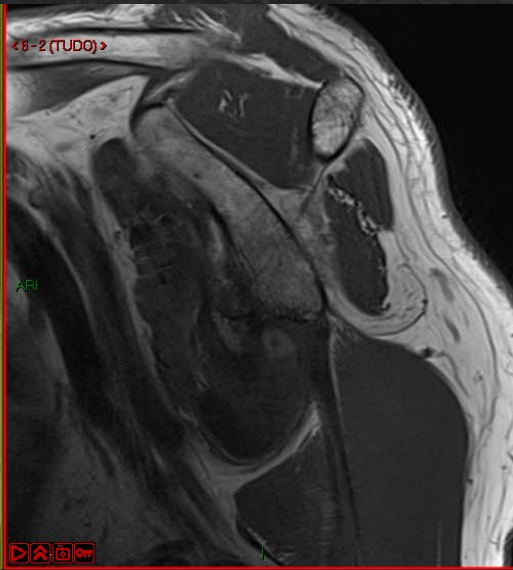
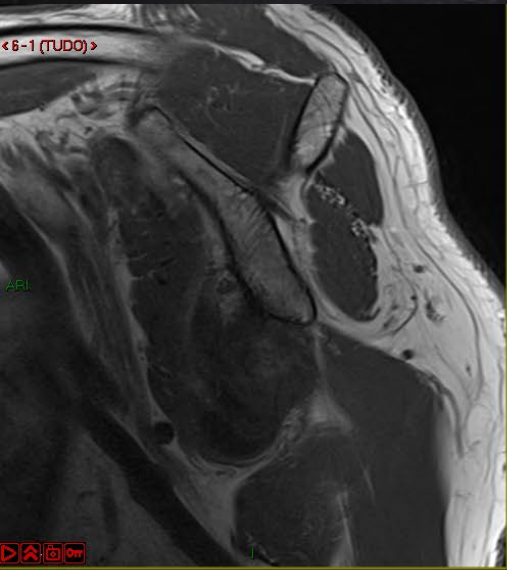
MASSIVE SHOULDER OA WITH LABRAL DEGENERATION, PARALABRAL CYST AND GIANT INFERIOR OSTEOFITES WITH AXILLARY NEUROPATHY (COMPRESSION)



# NEUROPATHY

## QUADRILATERAL SPACE

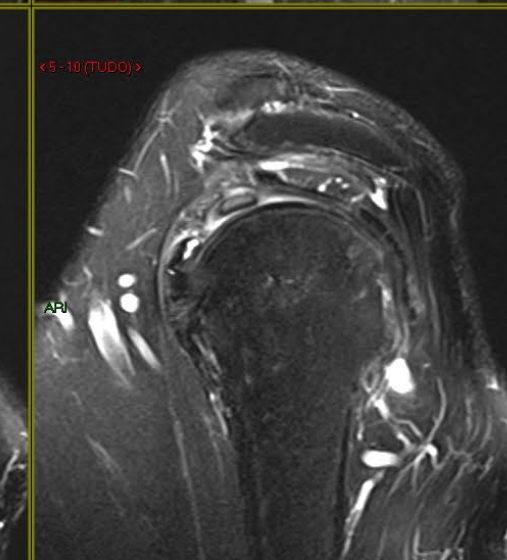
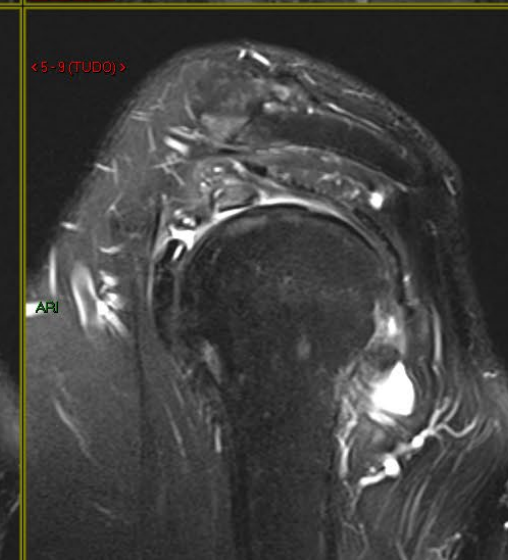
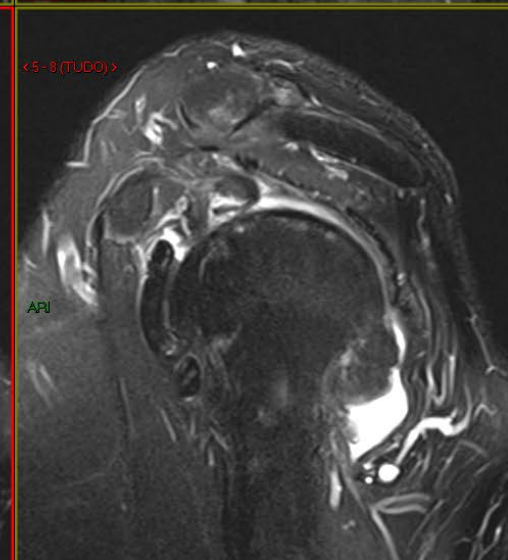
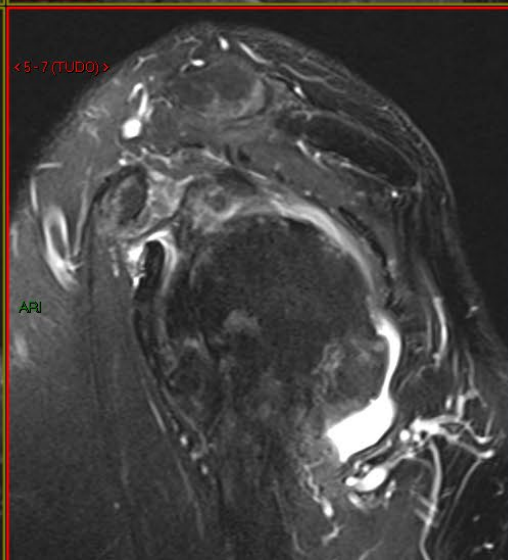
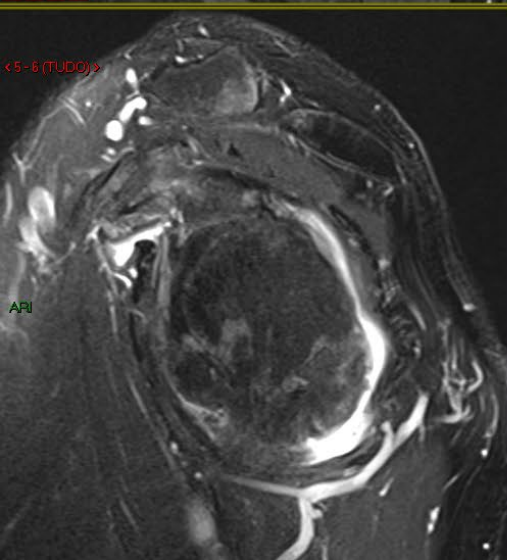
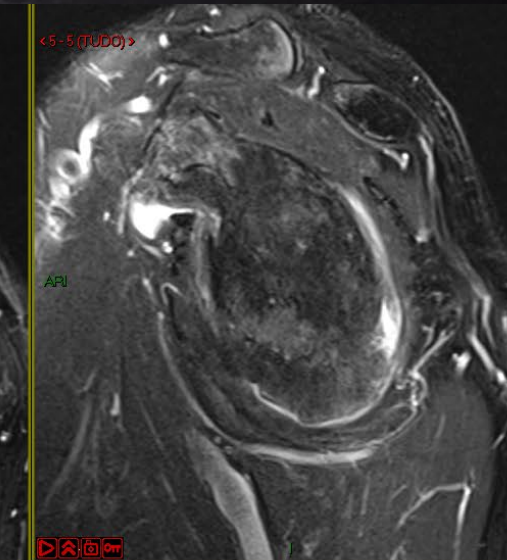
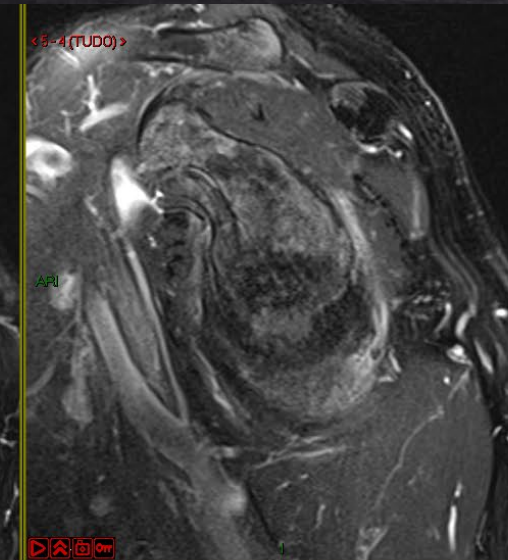
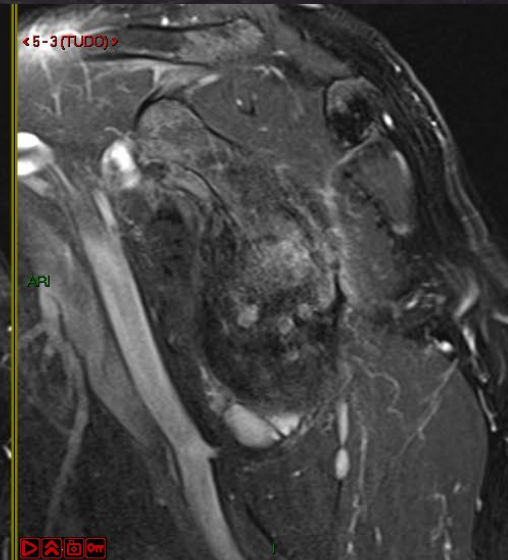
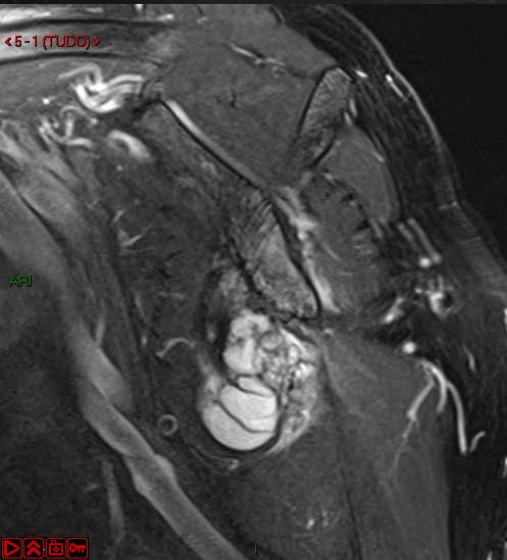
MASSIVE SHOULDER OA WITH LABRAL DEGENERATION, PARALABRAL CYST AND GIANT INFERIOR OSTEOFITES WITH AXILLARY NEUROPATHY (COMPRESSION)



# NEUROPATHY

## QUADRILATERAL SPACE

MASSIVE SHOULDER OA WITH LABRAL DEGENERATION, PARALABRAL CYST AND GIANT INFERIOR OSTEOFITES WITH AXILLARY NEUROPATHY (COMPRESSION)



NEUROPATHY

QUADRILATERAL SPACE

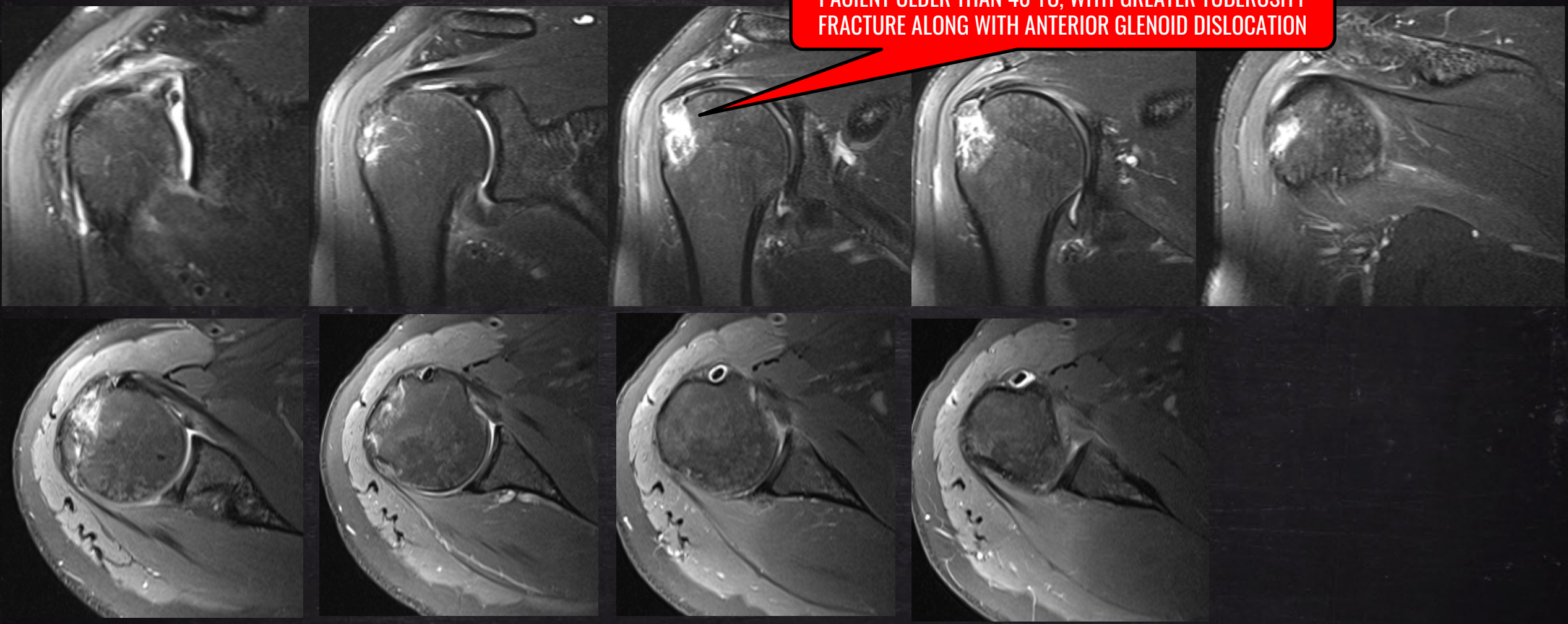
# CASE 2

# NEUROPATHY

## QUADRILATERAL SPACE

### ANTERIOR GLENOUMERAL DISLOCATION WITH AXILLARY NEUROPATHY

PACIENT OLDER THAN 40 YO, WITH GREATER TUBEROSITY FRACTURE ALONG WITH ANTERIOR GLENOID DISLOCATION



# NEUROPATHY

## QUADRILATERAL SPACE

ANTERIOR GLENOUMERAL DISLOCATION WITH AXILLARY NEUROPATHY

