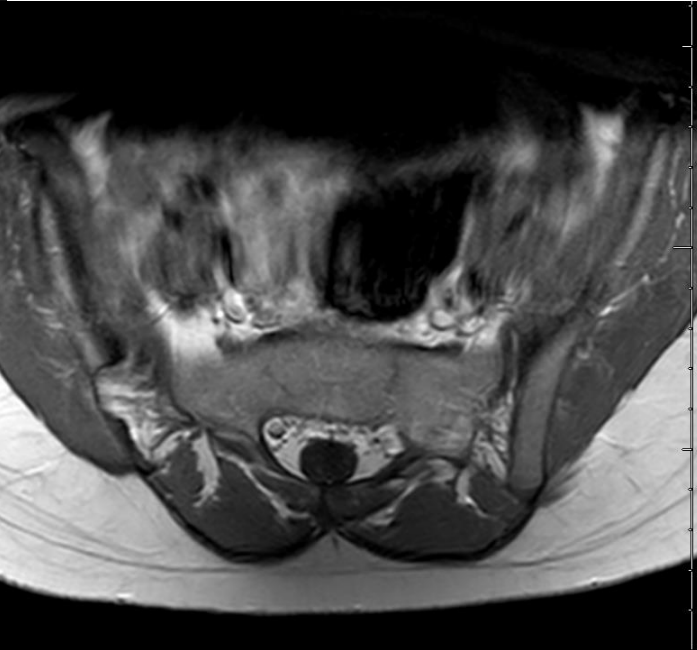
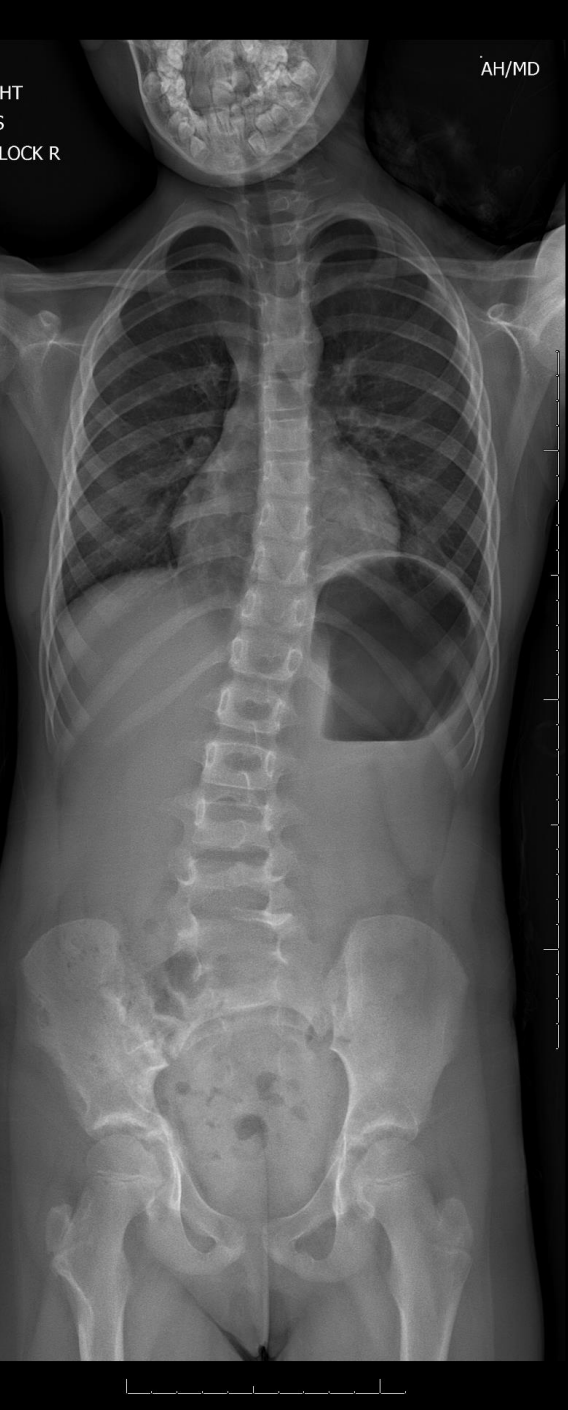
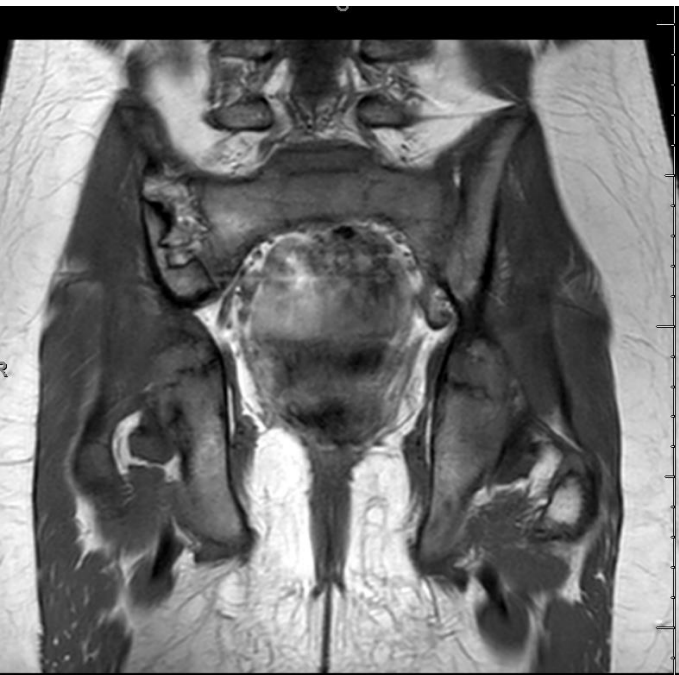


- 7-year-old girl with a history of scoliosis
- X-rays of the spine and lower limb discrepancy showed aggressive lesions at the right SIJ, cortical irregularity of the right iliac bone, and cortically-based lesions at the proximal and distal right femur.
- MRI and CT showed multiple cortical lesions of fat signal/attenuation with a smooth sclerotic margin in addition to the large bony changes/remodeling along the iliac side of the SIJ.
- I wonder if you call it as osseous cortical lipomatosis?





S



A

