

Left thigh mass , with reported
recent interval growth.
Incidentally noted on prior CTA
for peripheral vascular disease
January 2022. Concern for
possible sarcoma.

MRI Left Femur:

Top left: Sag T2FS

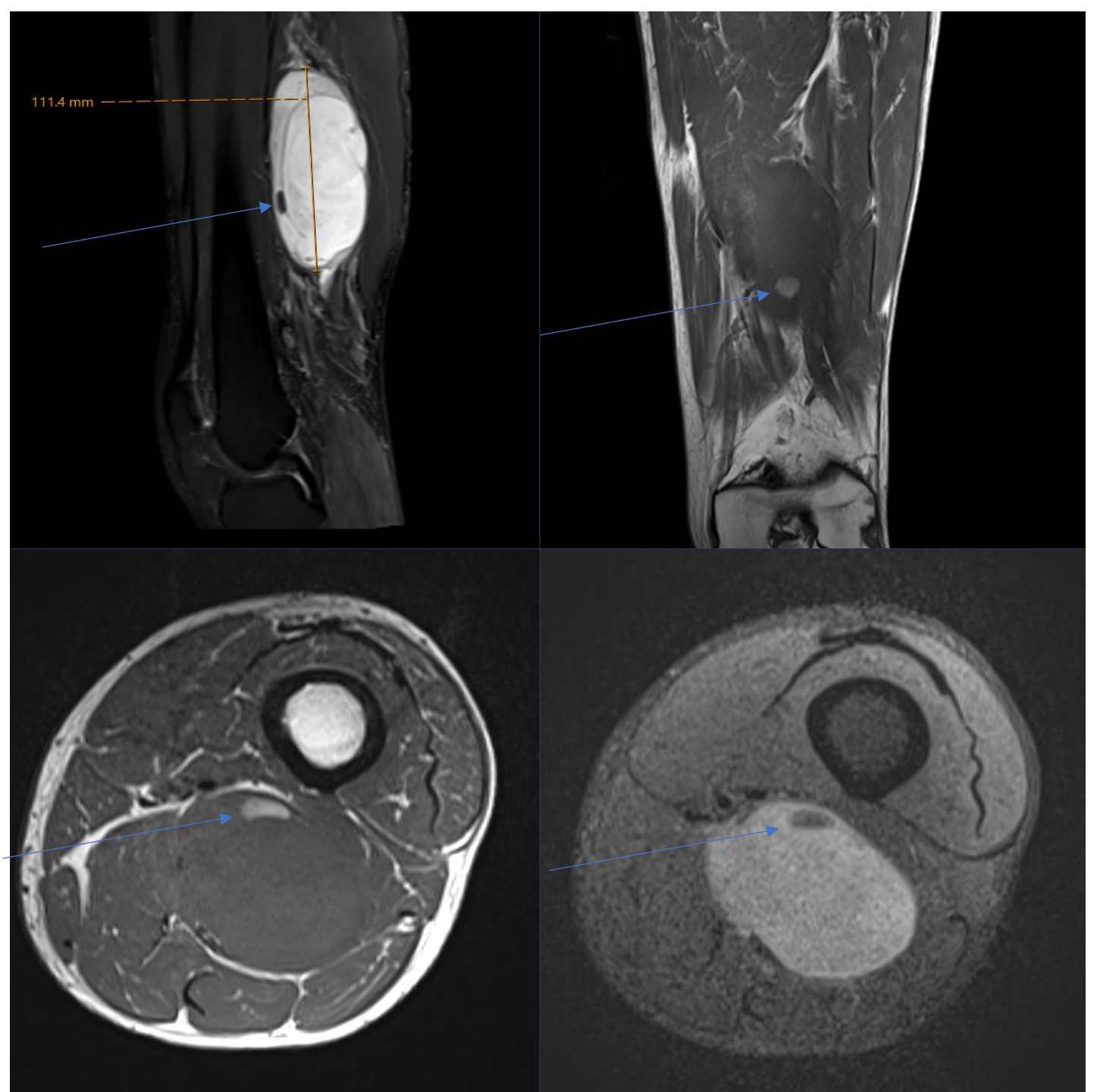
Top right: Cor T1

Bottom Left: Axial T1

Bottom right: Axial PDFS

Lobular, homogeneous T2 bright/T1 hypointense intermuscular mass with internal small thin septations and a few scattered lobules of macroscopic fat (largest referenced here)

Prior CTA not available. No other comparison imaging.



MRI Left Femur:

Top left: Axial DWI

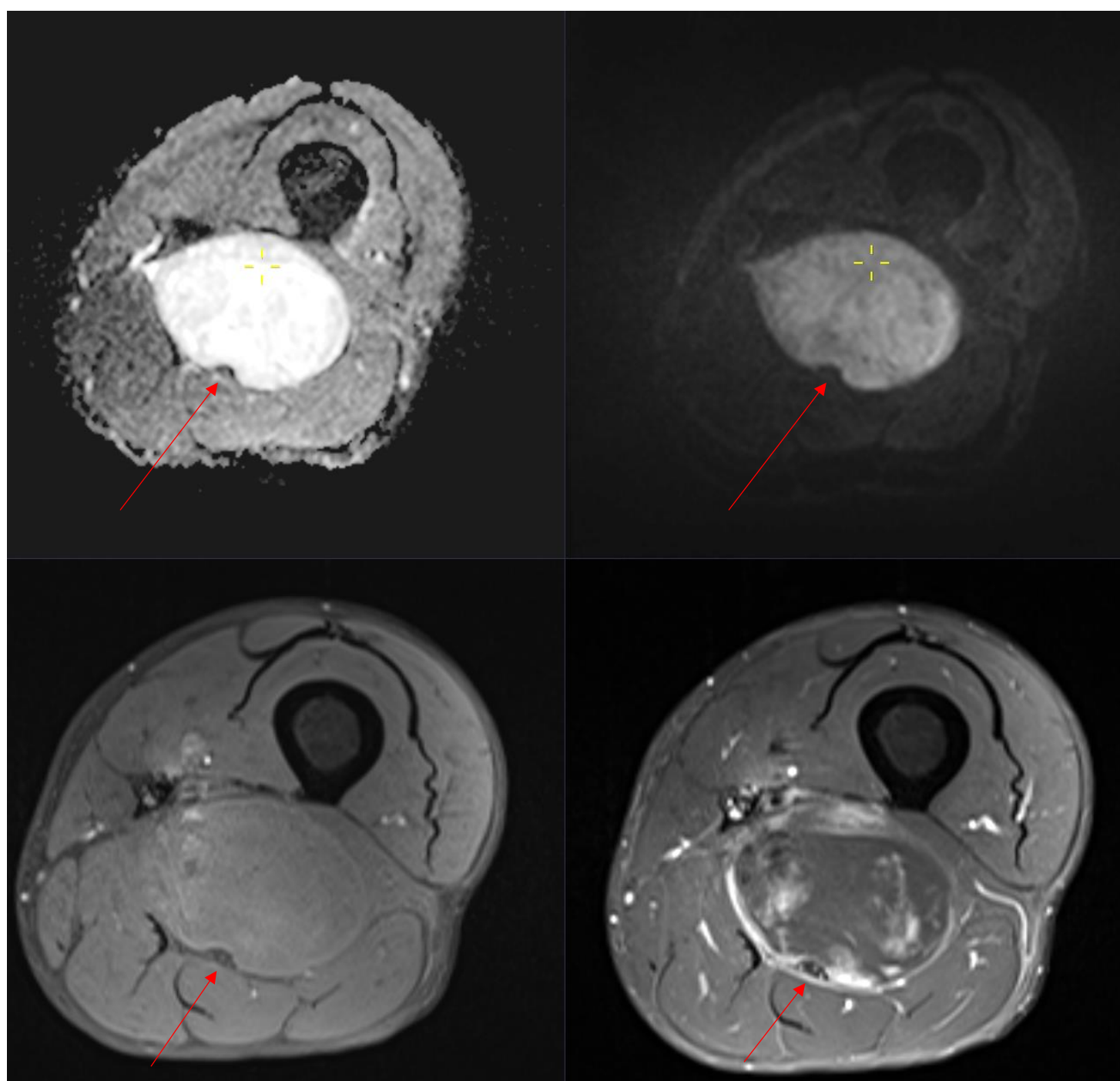
Top right: Axial ADC

Bottom Left: Axial Pre Con T1

Bottom right: Axial Post Con T1

Restricts diffusion, heterogeneous enhances

Sciatic nerve abuts posterior margin of the mass, but does not appear to fully encase. Involvement along anterior margin of sciatic nerve would be difficult to exclude (**red arrow**).



MRI Left Femur:

Top left: Cor PDFS

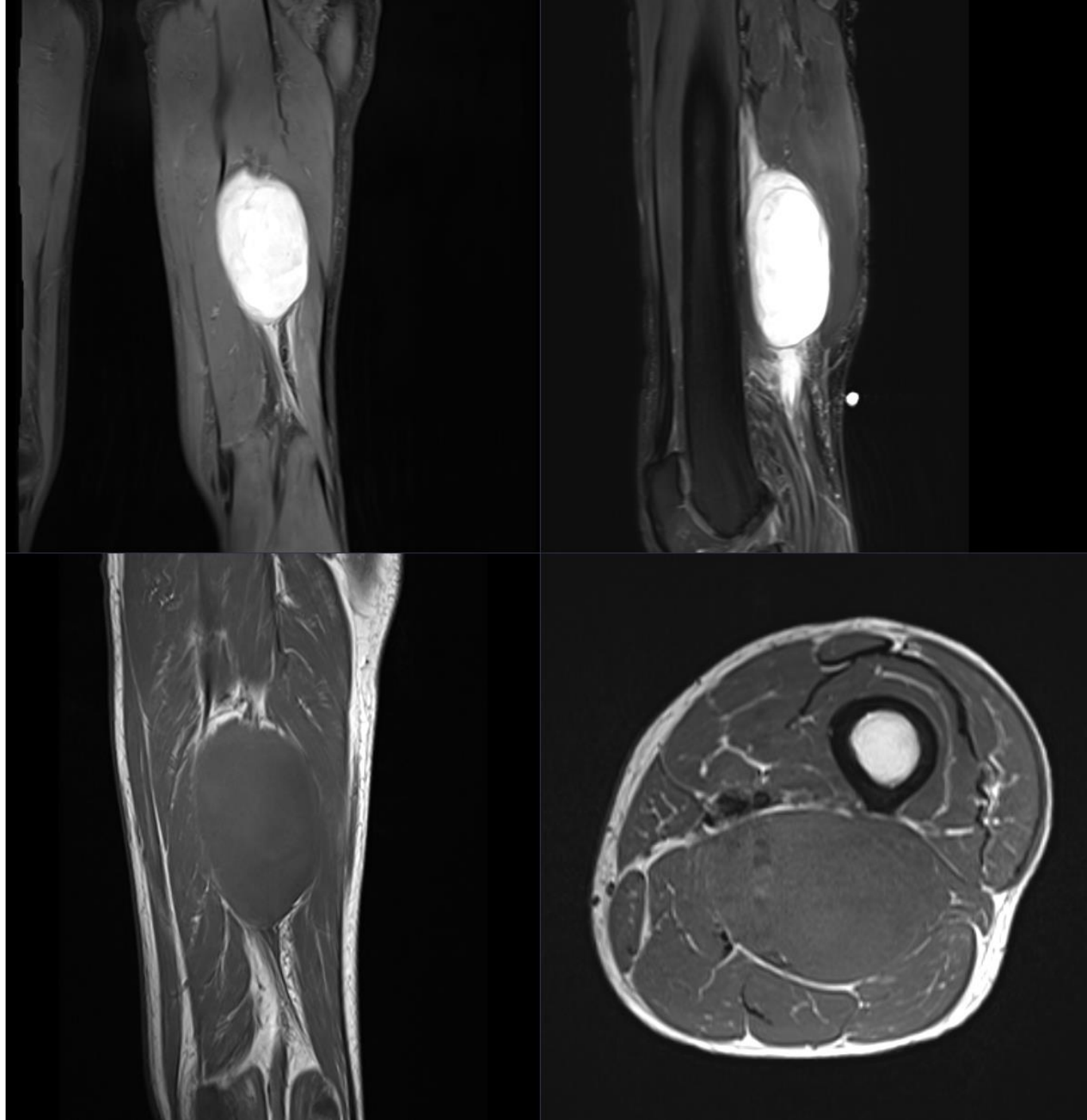
Top right: Sag T2FS

Bottom Left: Cor T1

Bottom right: Axial T1

Question split-fat sign on the Cor and Axial T1?

Peritumoral edema on the Cor PDFS and Sag T2FS



Possible myxoid liposarcoma given the macroscopic fat and high T2/PD content?

Or

Possible peripheral nerve sheath tumor (such as a Schwannoma with fat and even malignant degeneration)? Neurofibroma is thought to be much less likely given relative preservation of the sciatic nerve

Has anyone ever seen PNSTs, such as a Schwannoma with macroscopic fat degeneration?