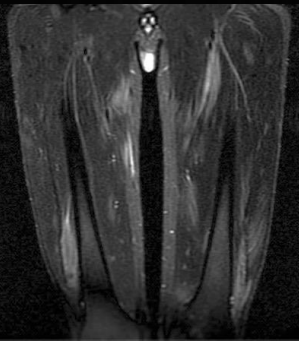
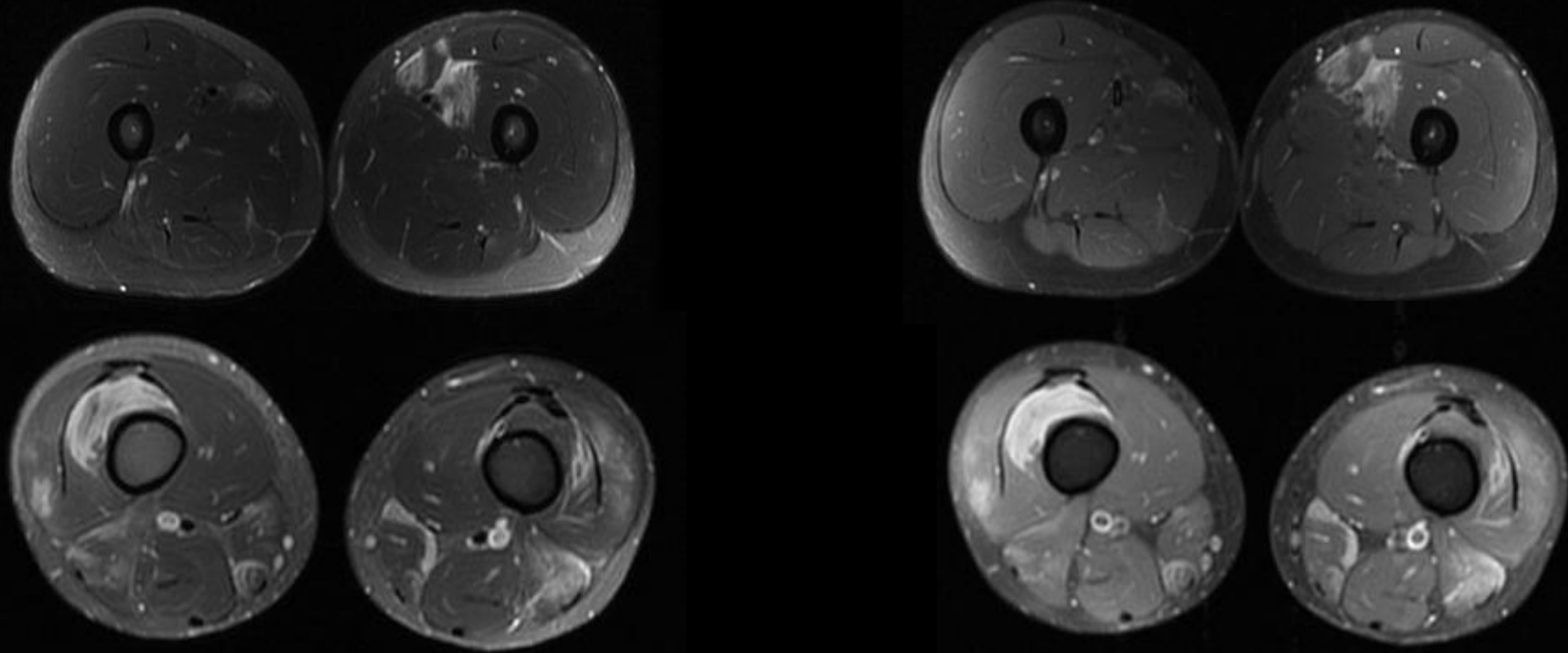


SARCOID MYOPATHY

- Muscular involvement in sarcoidosis is rare
 - Multifocal or diffuse pattern
1. Multifocal (Nodular)
 - Multiple intramuscular nodules with high signal intensity in T2 and STIR sequences, and post-gadolinium enhancement
 - “Umbilicated” aspect, with central fibrosis (low signal intensity in T2 – “dark star” sign)
 2. Diffuse
 - non-specific, MRI initially normal



Male, 23 yo, volumetric increase without pain in anterior aspect of the distal right thigh. The same pattern was seen in contralateral thigh, forearm and leg. Muscle Bx: granulomas (sarcoid).