



## Spine Case

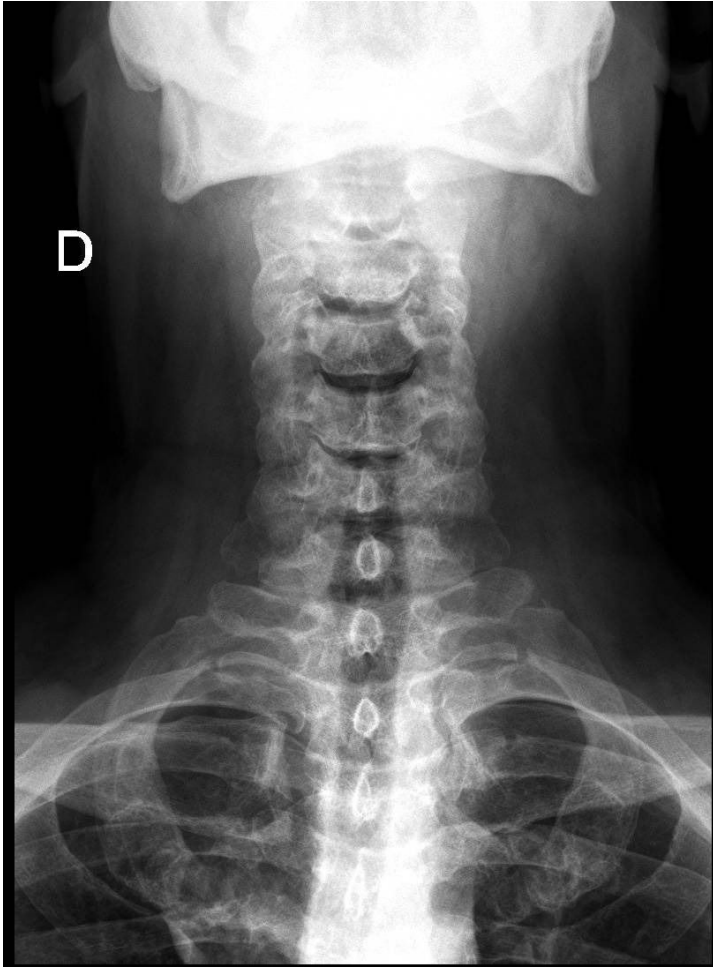
---

44 yo, male patient, with a history of increasing paresthesia of upper extremities.



# X-ray

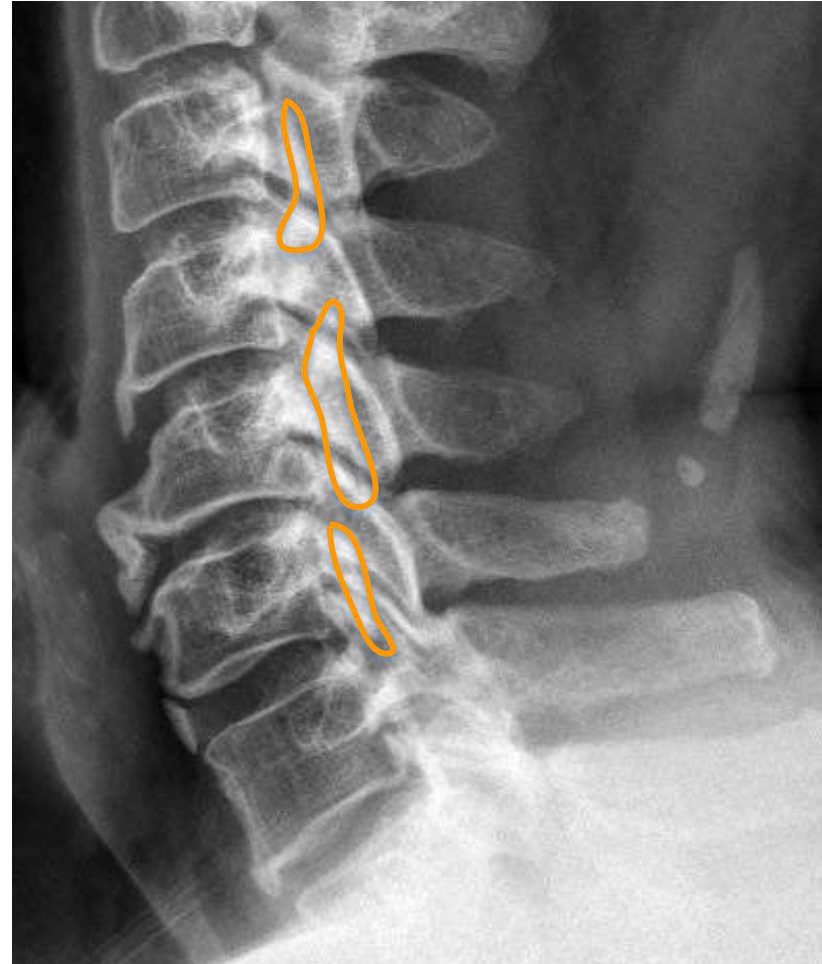
---





X-ray

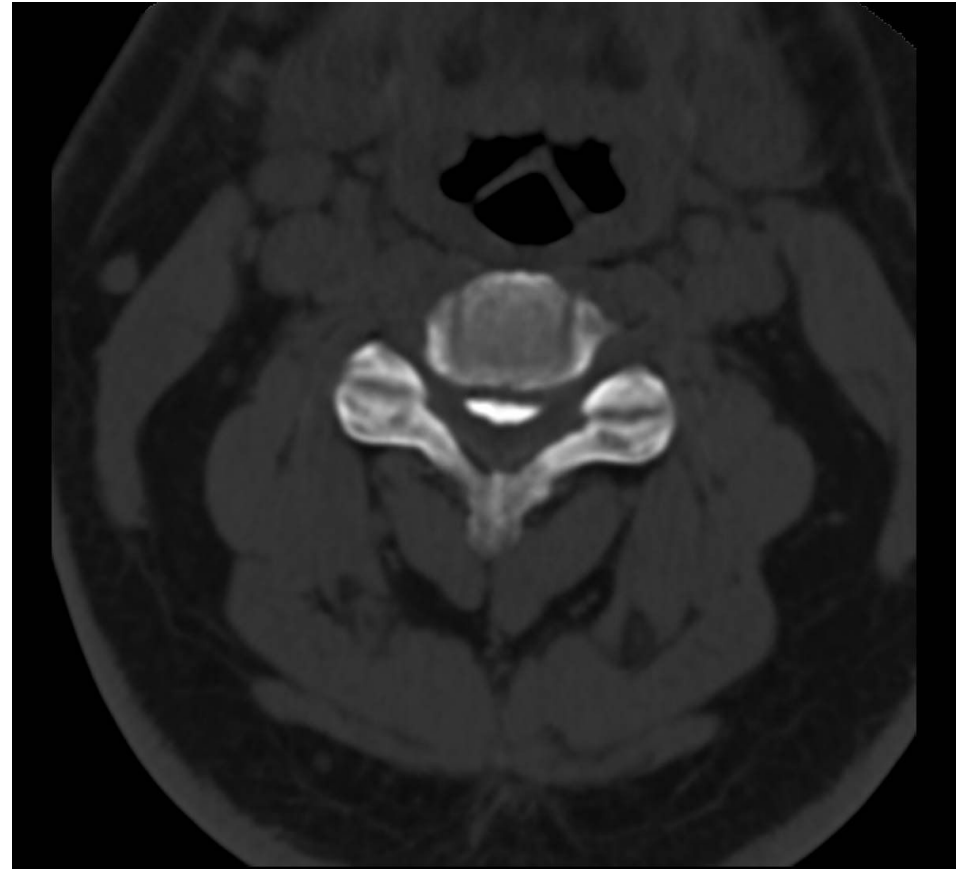
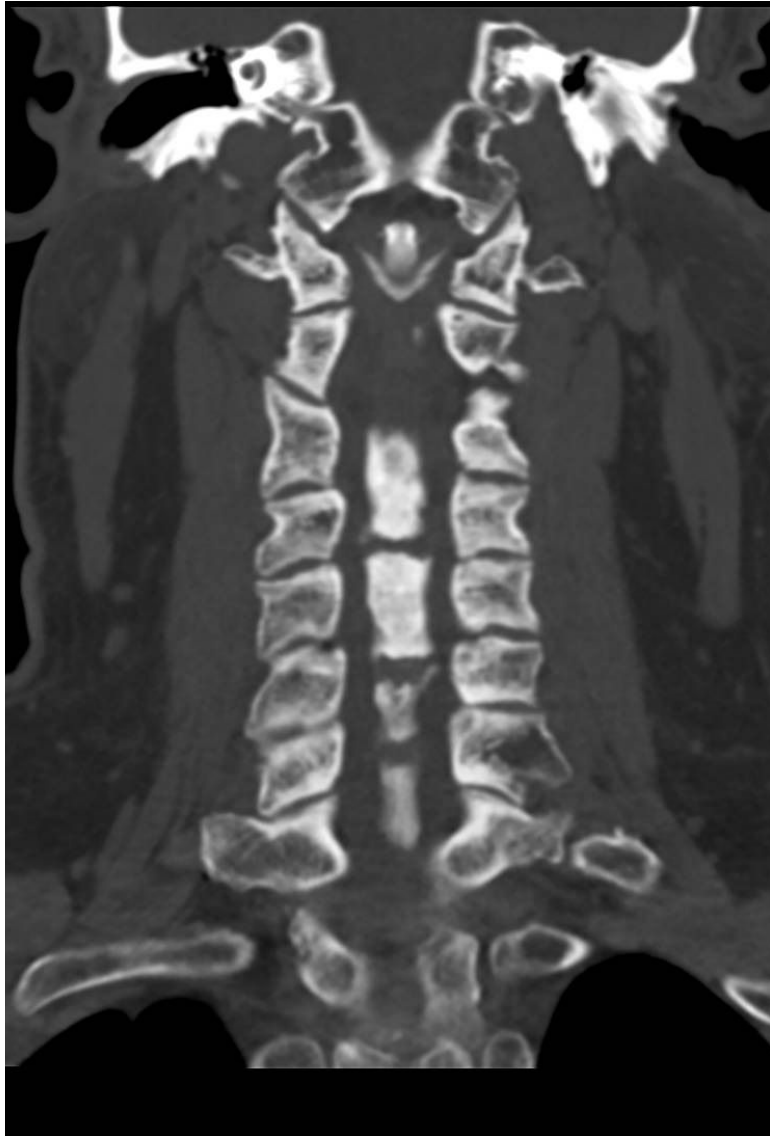
---





CT

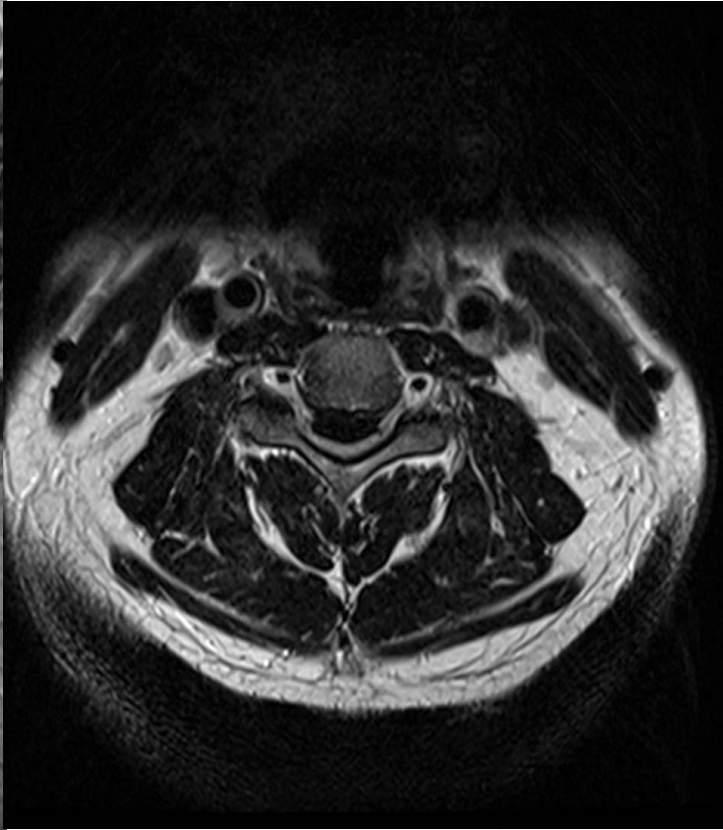
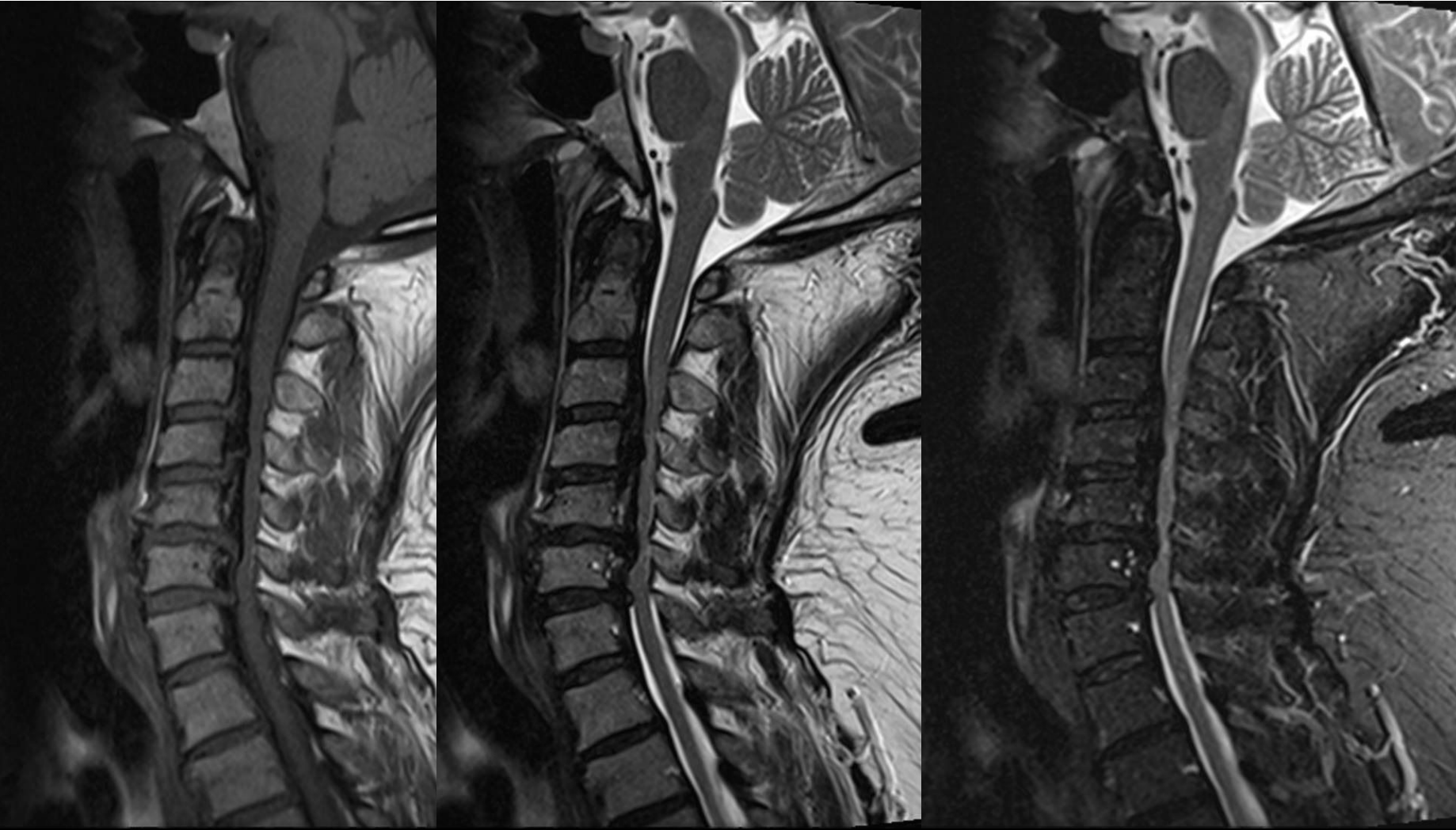
---





MRI

---





## DISH + OPLL (Ossification of the Posterior Longitudinal Ligament) with compressive myelopathy.

Reference: Shigeru Ehara et al. Paravertebral ligamentous ossification: DISH, OPLL and OLF, European Journal of Radiology, Volume 27, Issue 3, 1998, Pages 196-205, ISSN 0720-048X, [https://doi.org/10.1016/S0720-048X\(97\)00164-2](https://doi.org/10.1016/S0720-048X(97)00164-2).

ATUL KUMAR TANEJA, MD, PHD

[taneja@einstein.br](mailto:taneja@einstein.br)



**ALBERT EINSTEIN**  
INSTITUTO ISRAELITA DE  
**ENSINO E PESQUISA**

**CENTRO DE EDUCAÇÃO EM SAÚDE  
ABRAM SZAJMAN**