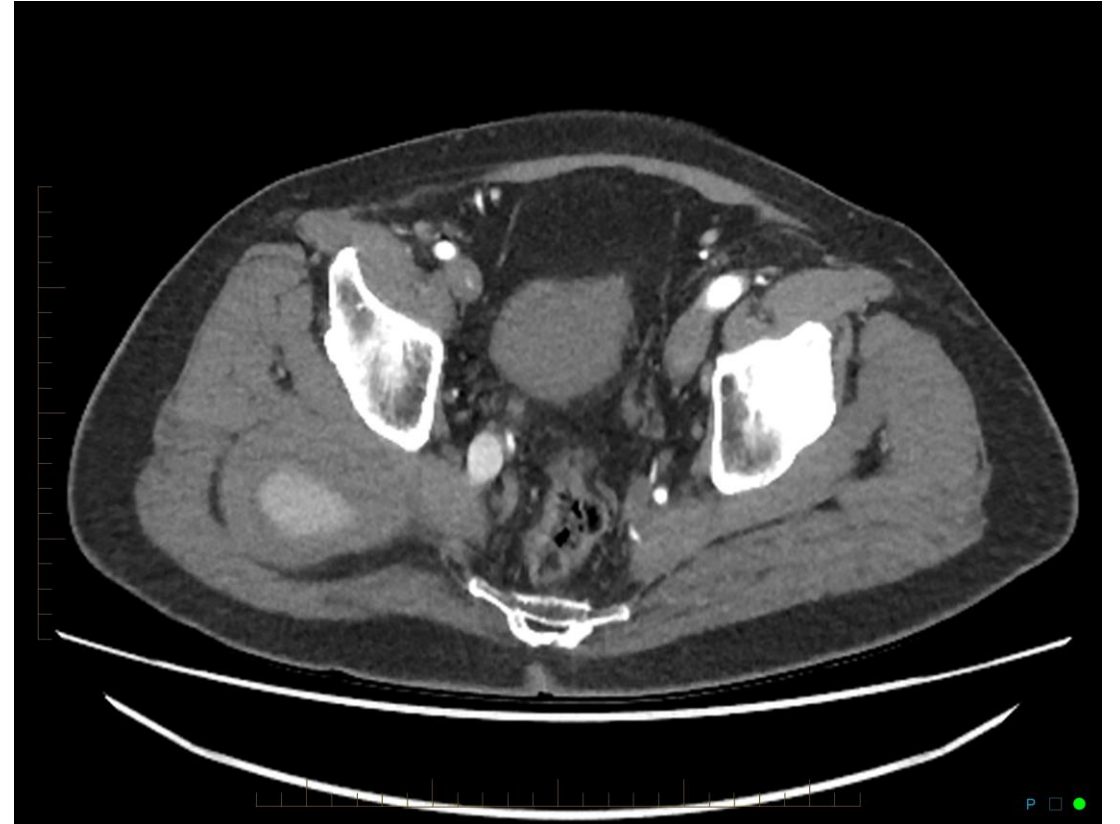
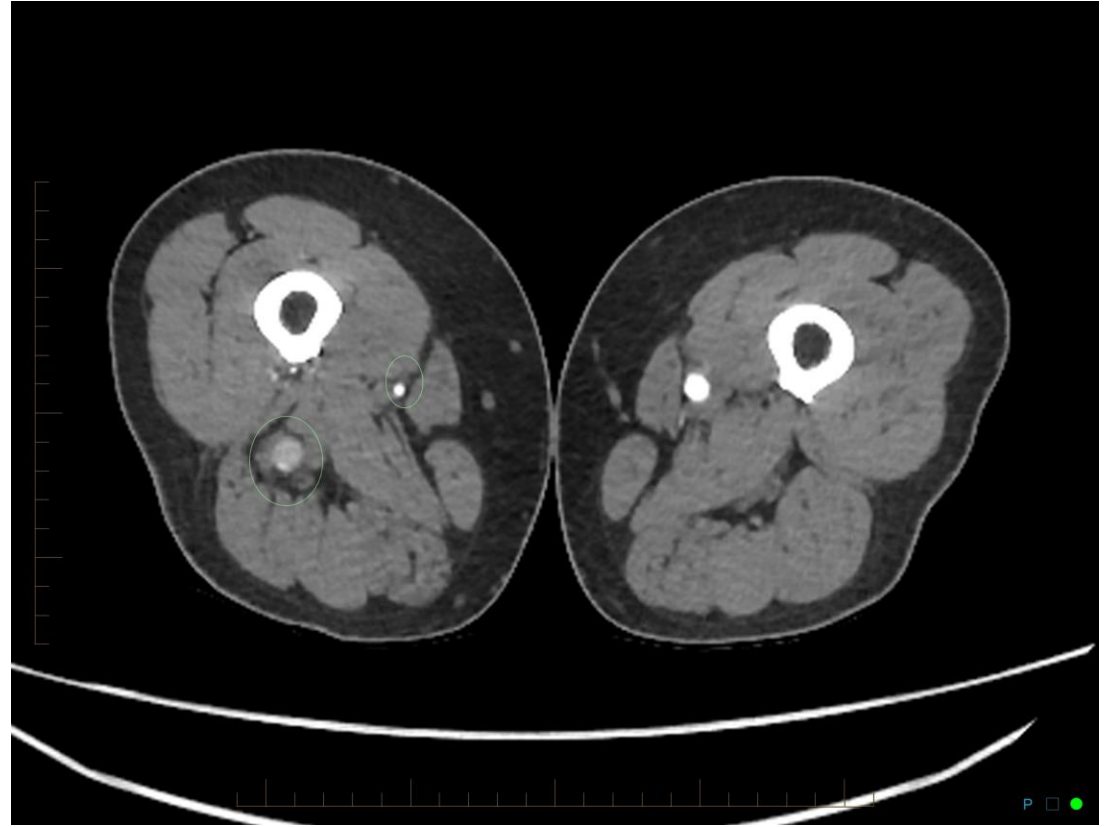


70M NEW BUTTOCK PAIN AND ?MASS
PRESENTS TO ORTHOPEDIST – PREVIOUS LUMBAR SPINE
INTERVENTIONS



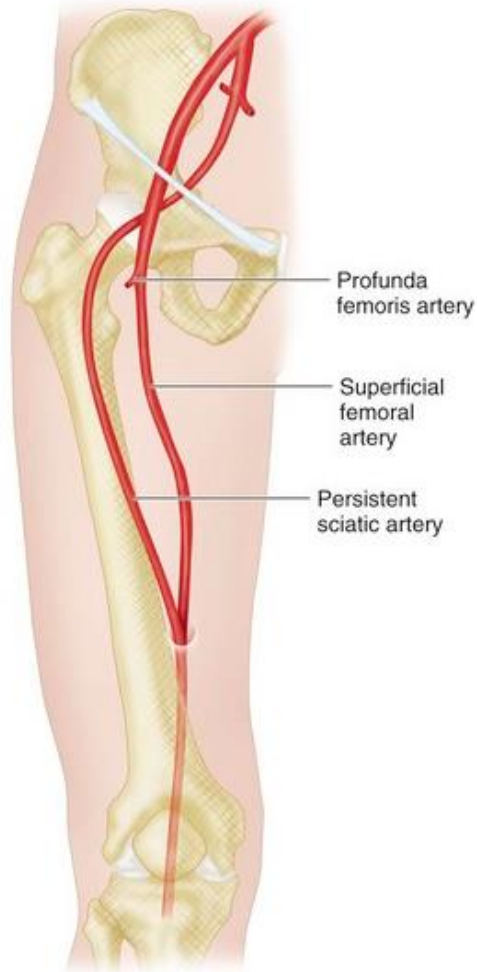




ANEURYSM OF A COMPLETE PERSISTENT SCIATIC ARTERY – note hypoplastic SFA



PERSISTENT SCIATIC ARTERY



RARE : 0.01-0.05%

PERSISTENT EMBRYOLOGICAL AXIAL ARTERY OF LOWER LIMB

COMPLETE : SFA HYPOPLASTIC

INCOMPLETE : SFA DOMINANT

PRESENTATION:

LOWER LIMB ISCHEMIA

ANEURYSM IN 10-48%

POST OPERATIVE FEM-POP BYPASS AND ENDOVASCULAR OCCLUSION OF ANEURYSM

