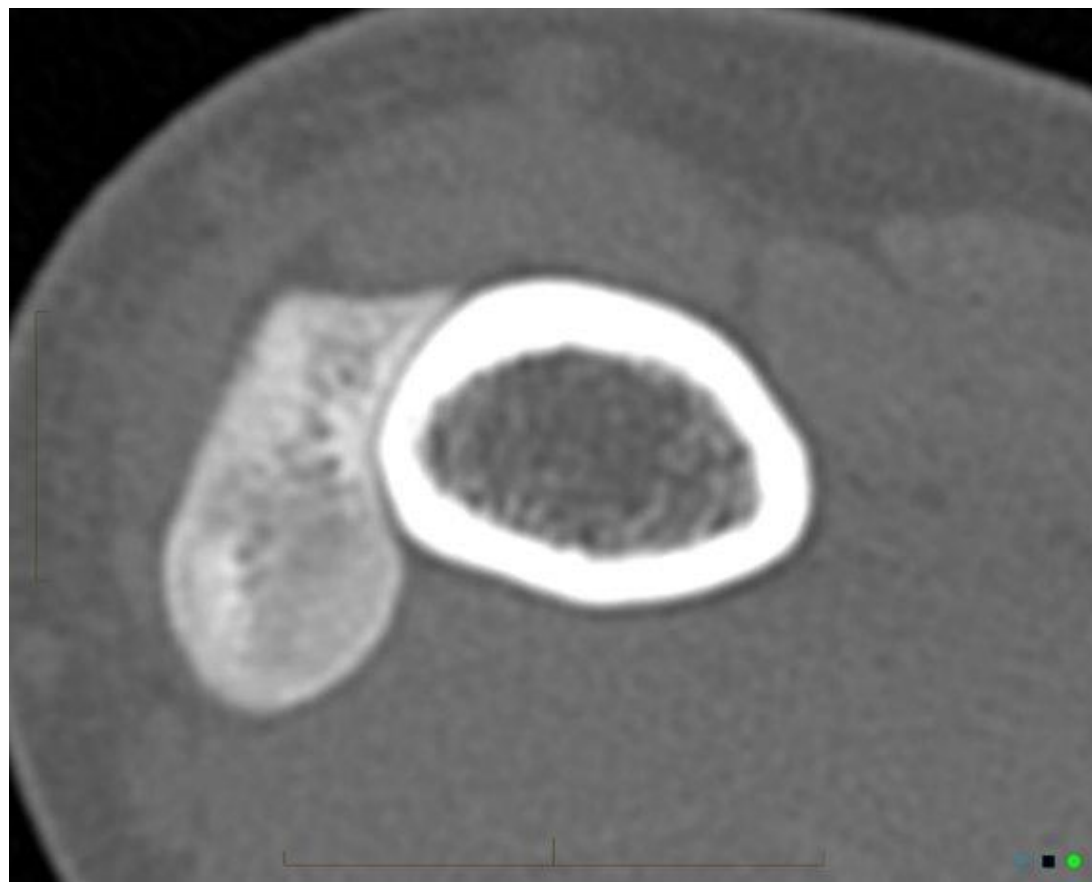
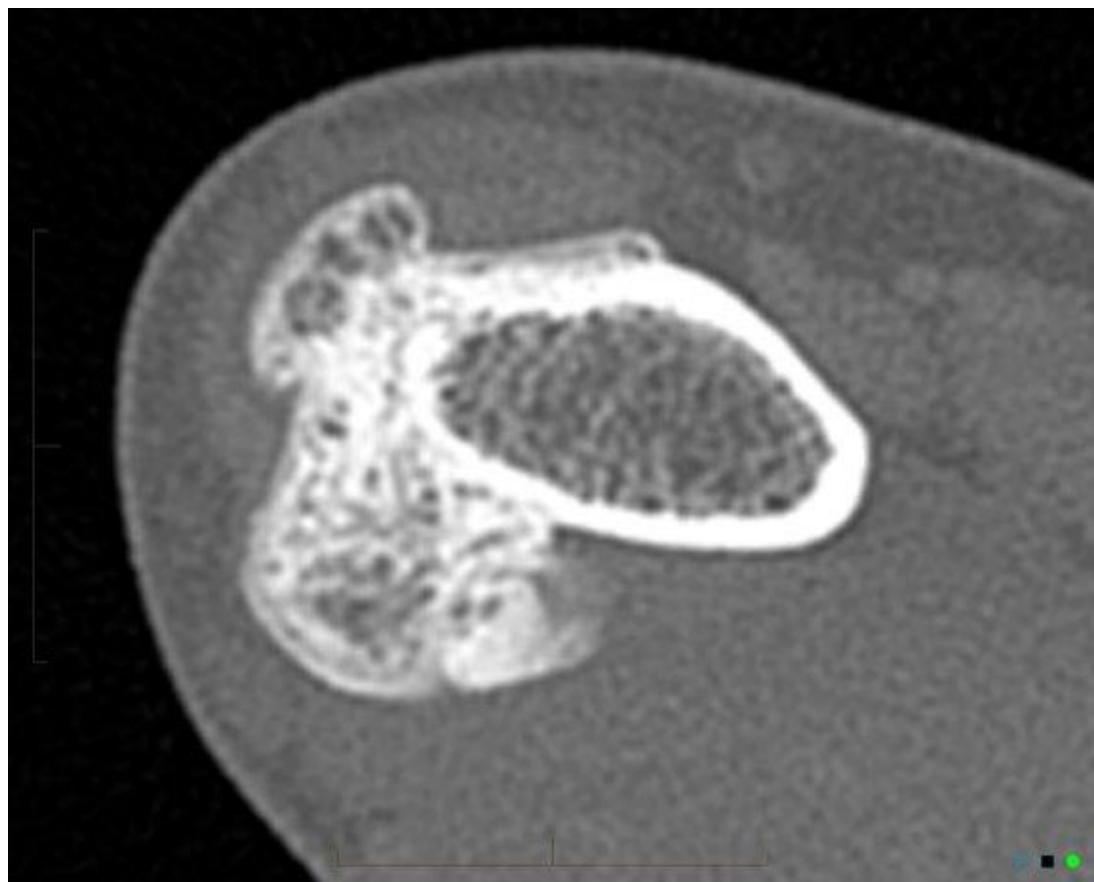
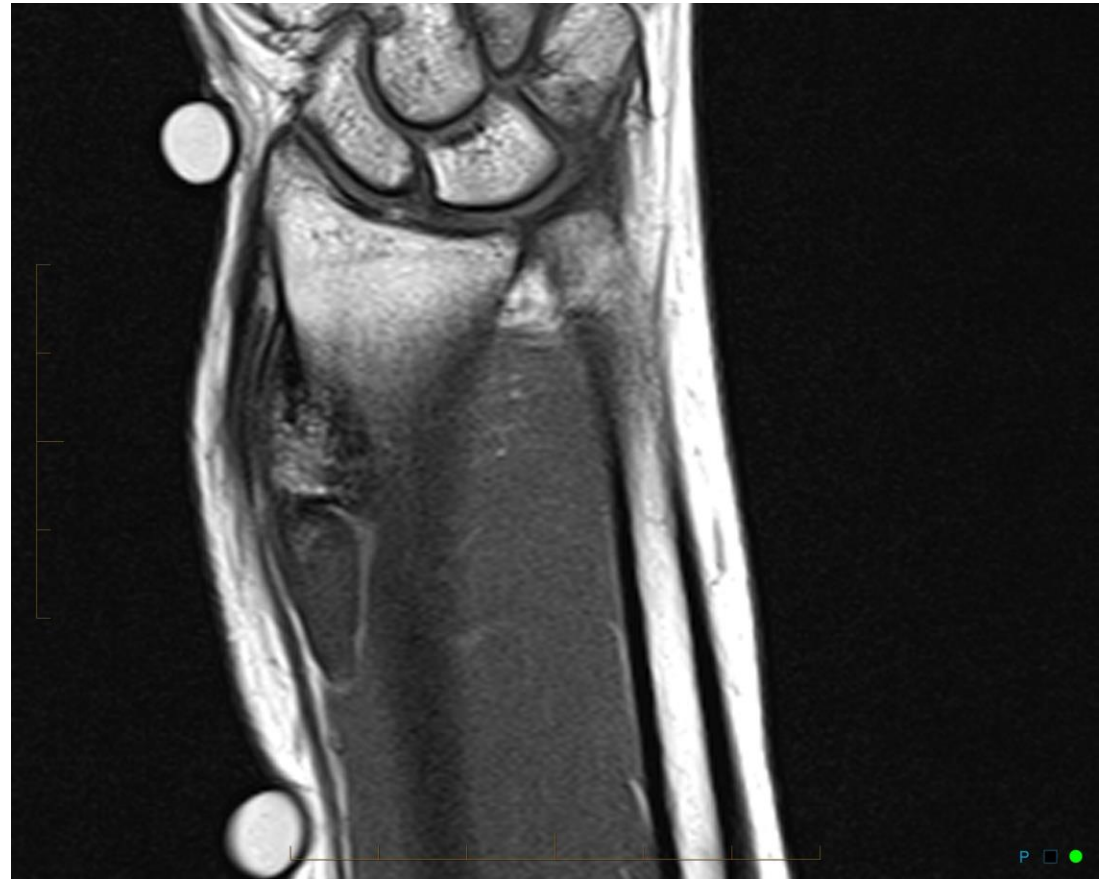
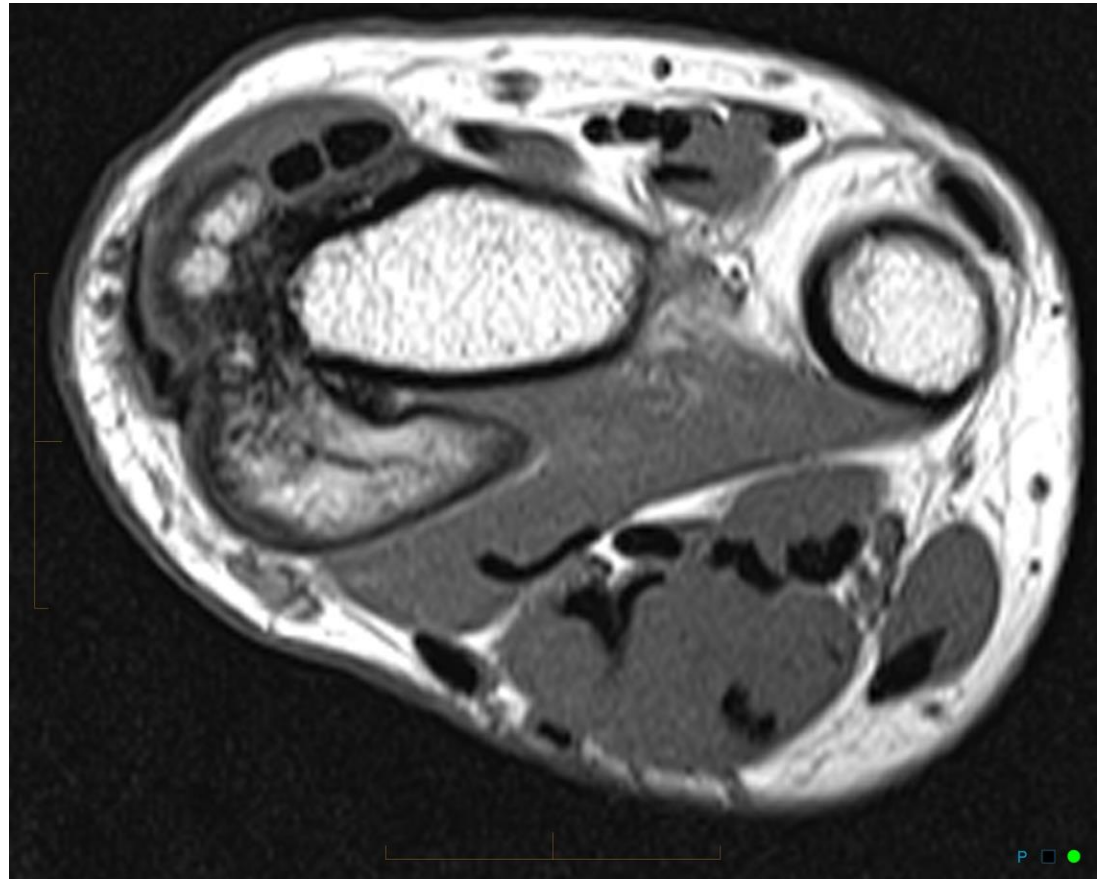
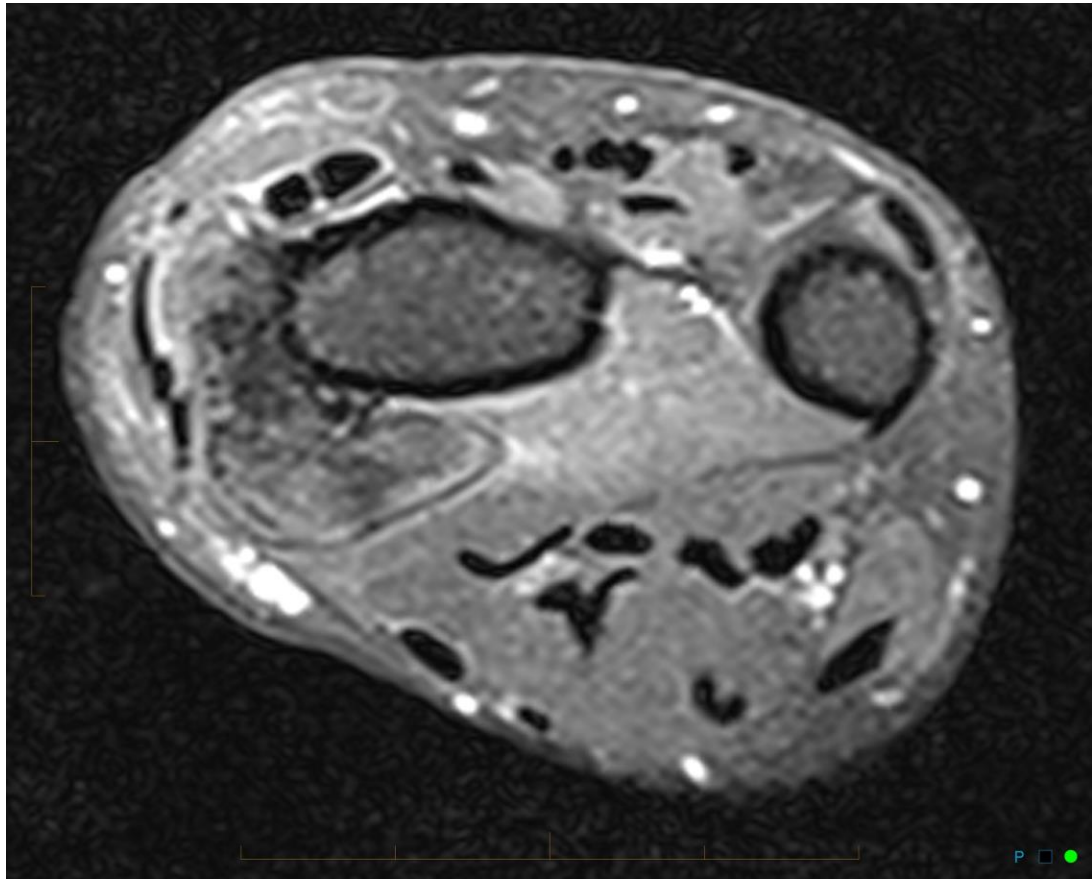


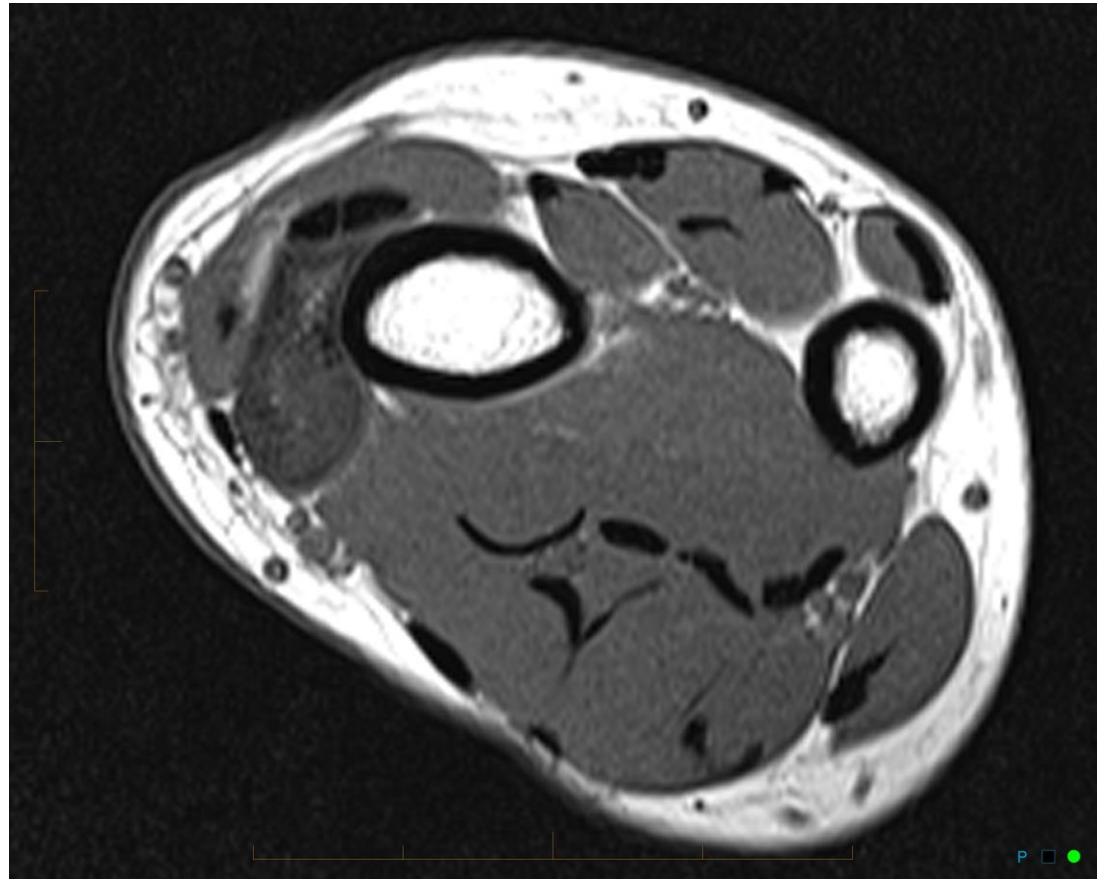
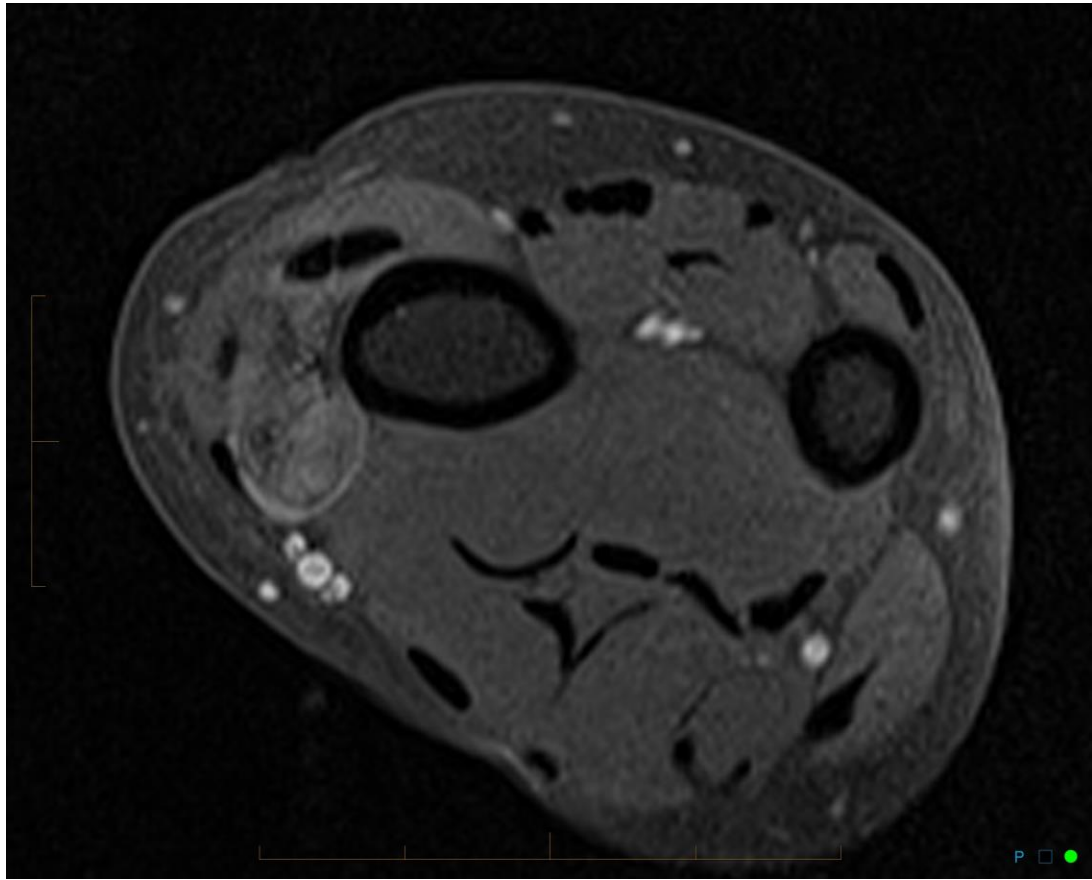
# 32F PAINLESS SLOW GROWING DISTAL RADIAL MASS



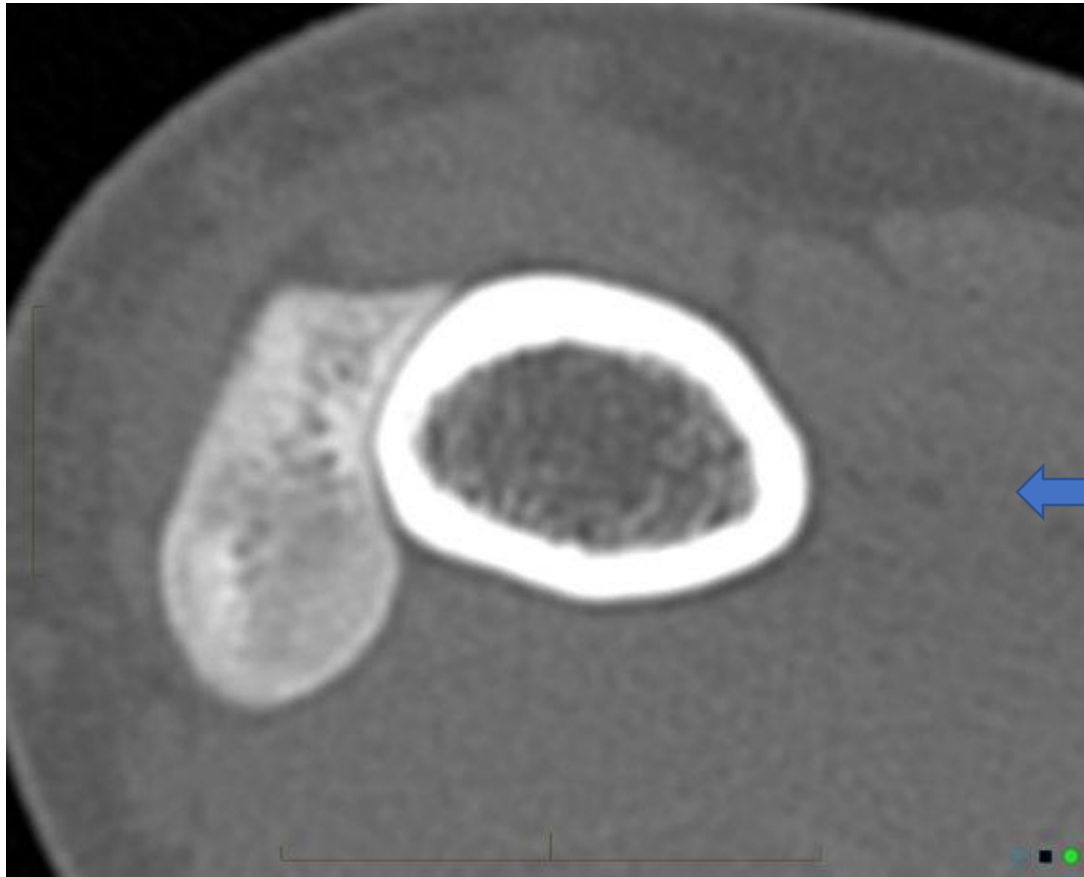








# PAROSTEAL OSTEOSARCOMA



AGE 20-40

METAPHYSEAL, MOST COMMONLY DISTAL FEMUR

ARISES FROM CORTEX

CAN WRAP AROUND BONE

MORE IMMATURE BONE PERIPHERALLY ( cf MO)

← CLEAVAGE/STRING SIGN

SOFT TISSUE MASS IN HIGHER GRADE LESIONS

James S. Jelinek, MD • Mark D. Murphey, MD • Mark J. Kransdorf, MD • Barry M. Shmookler, MD  
Martin M. Malawer, MD • Regina C. Hur, MPH

**Parosteal Osteosarcoma: Value of MR Imaging  
and CT in the Prediction of Histologic Grade<sup>1</sup>**

RadioGraphics

**Imaging Characteristics  
of Primary Osteosar-  
coma: Nonconventional  
Subtypes<sup>1</sup>**

CME FEATURE  
See www.radiology.org

Gail Yarnish, MD • Michael J. Klein, MD • Jonathan Landa, DO  
Robert A. Lefkowitz, MD • Sinchun Hwang, MD