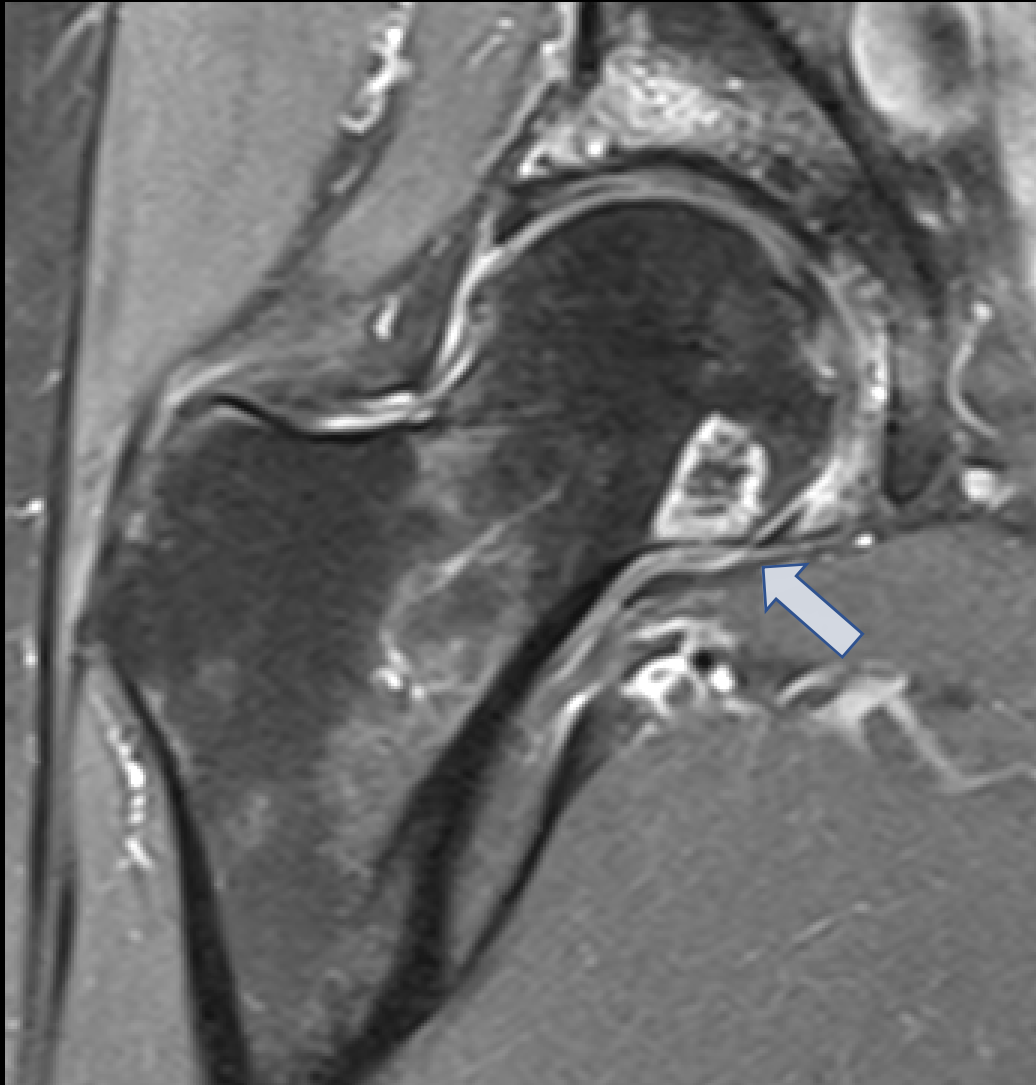
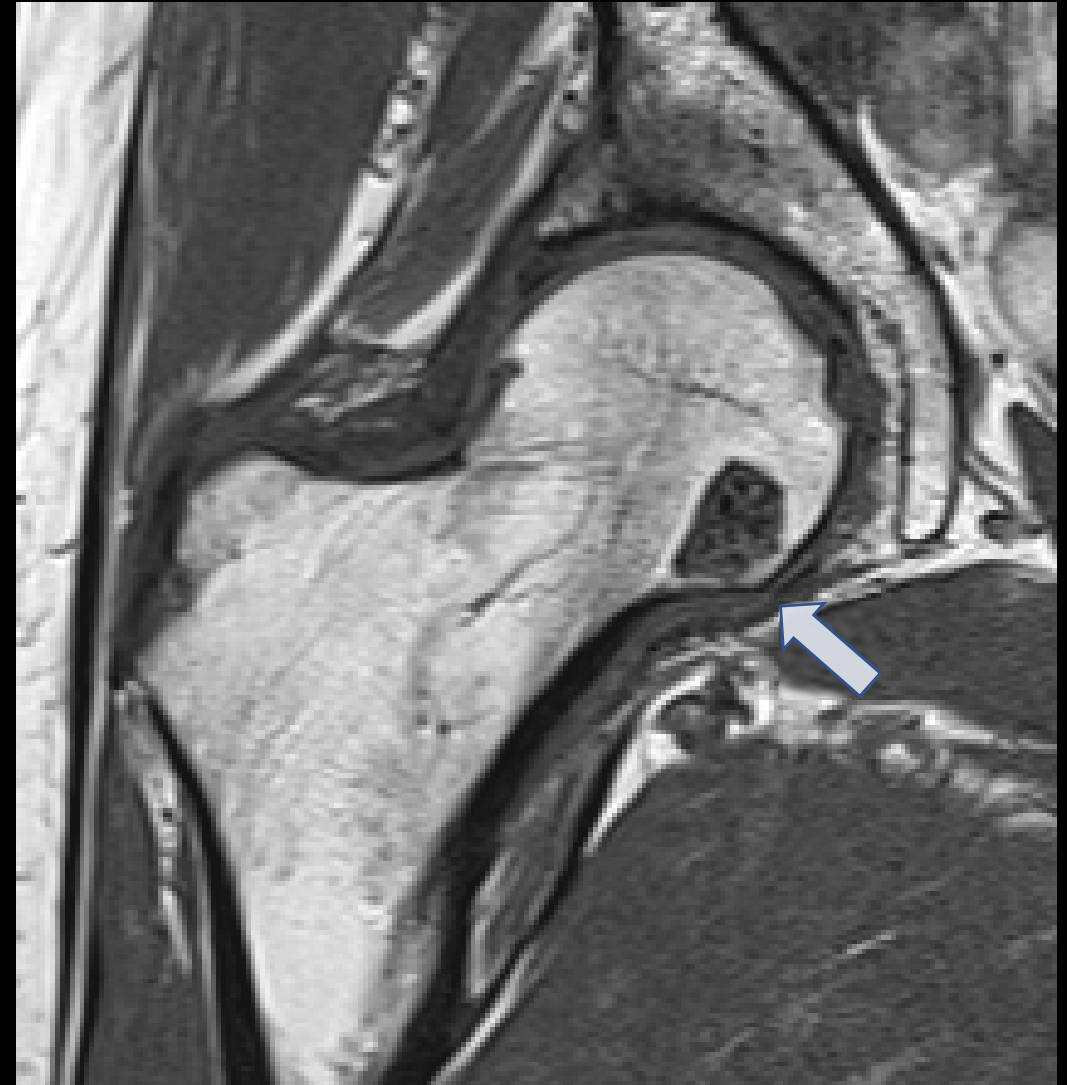


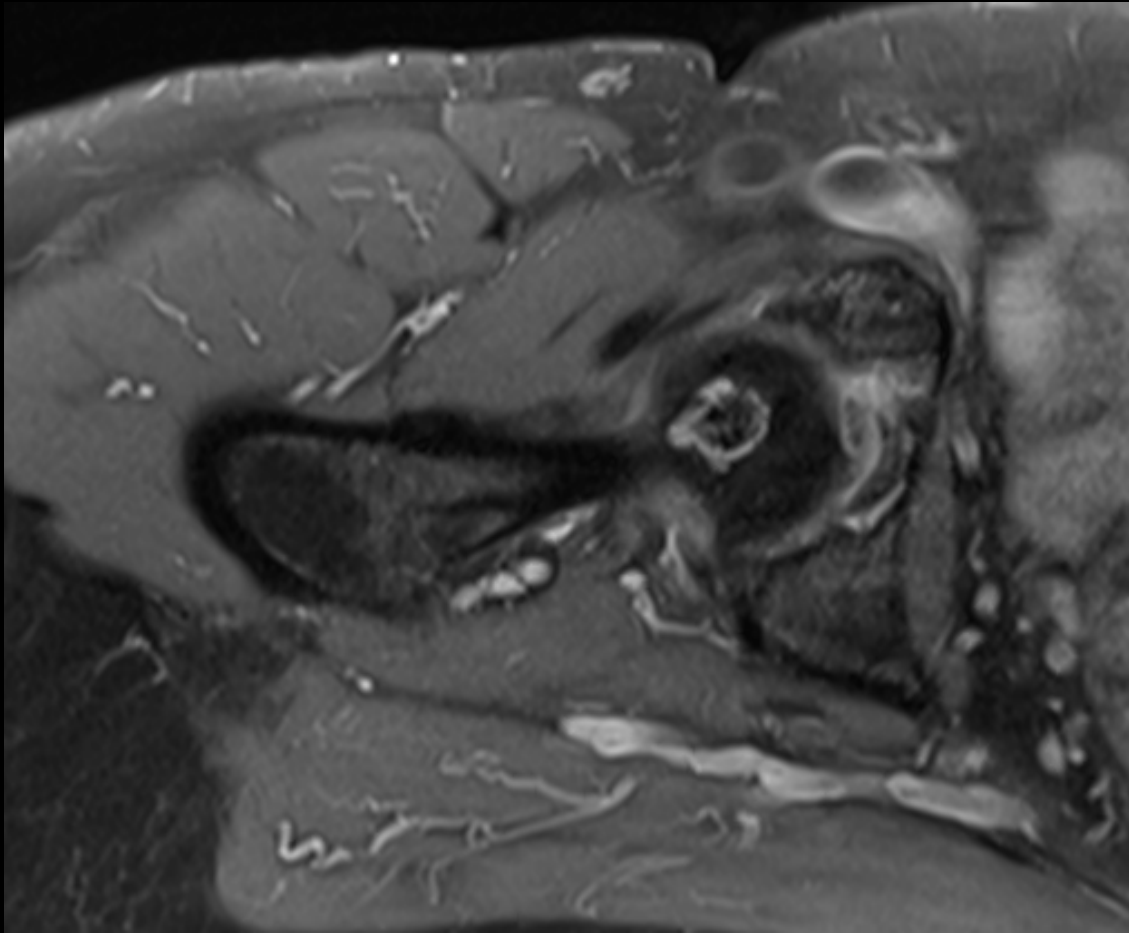
- 62 year old woman
- Pain in the groin since 6 months, also while in sitting position
- No trauma
- No X-ray or CT available
- Question:
 - What is your opinion about the bone marrow lesion in the medial femoral neck?
 - What do the dark dots in T1 within the lesion represent?



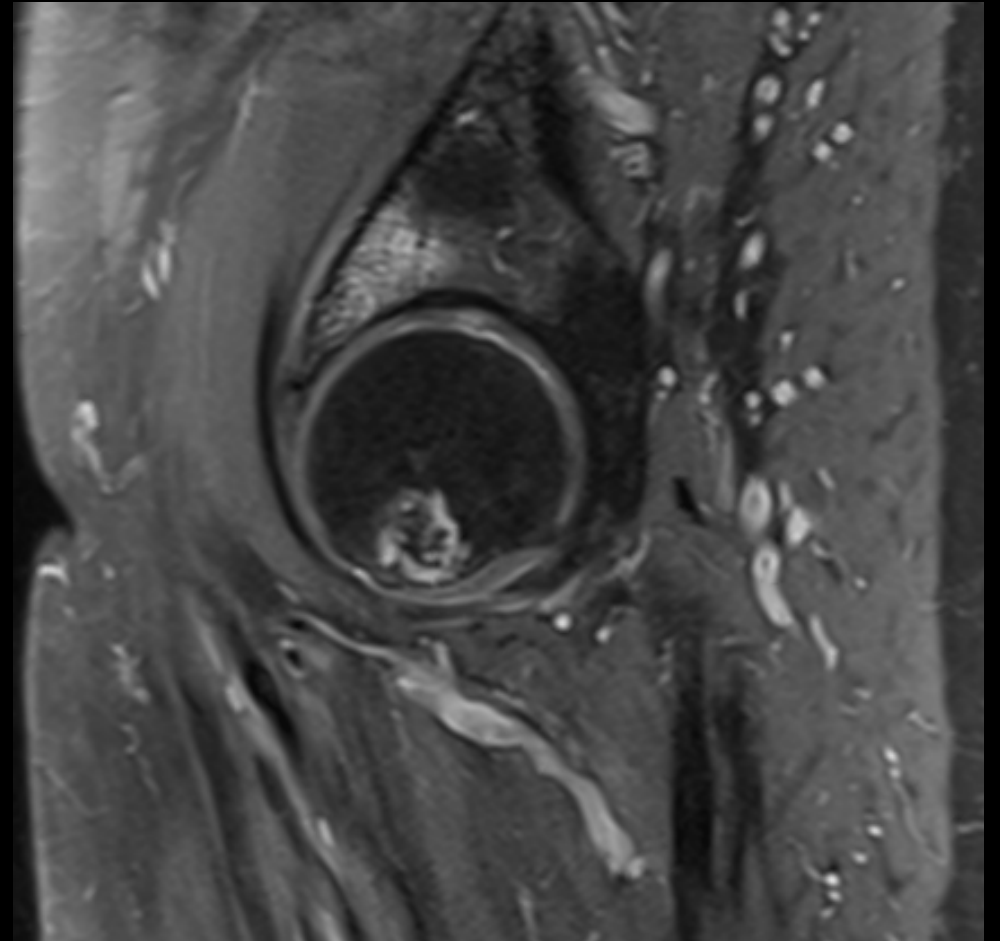
cor obl PD fs



cor obl T1



tra obl PD fs



sag PD fs