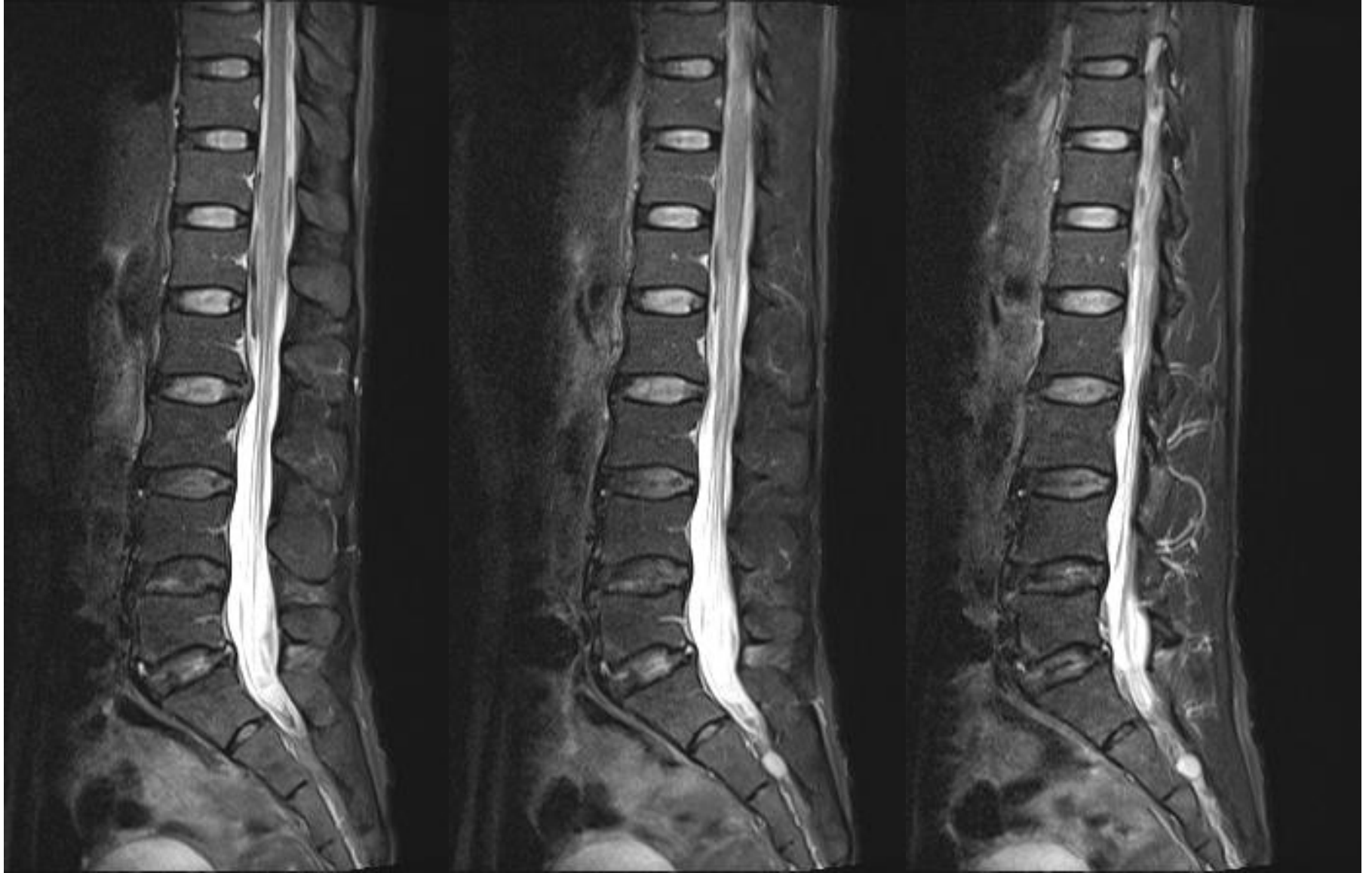


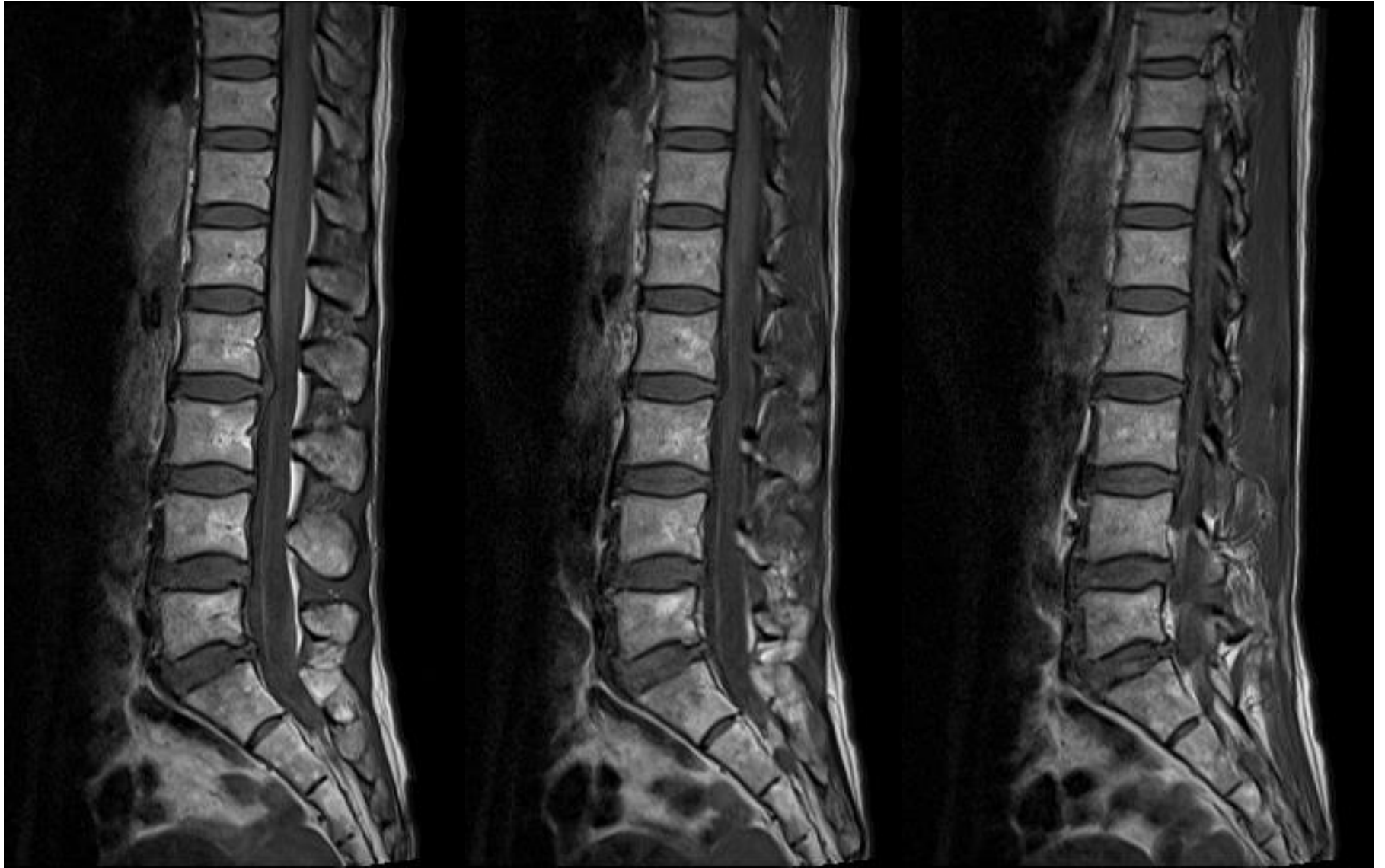
Please, help~

- 54 years old, female.
- A few days ago, when she looked back from the chair, she felt a sudden pain in her back.
- Her past medical history was not unusual and she was not treated with anticoagulants.

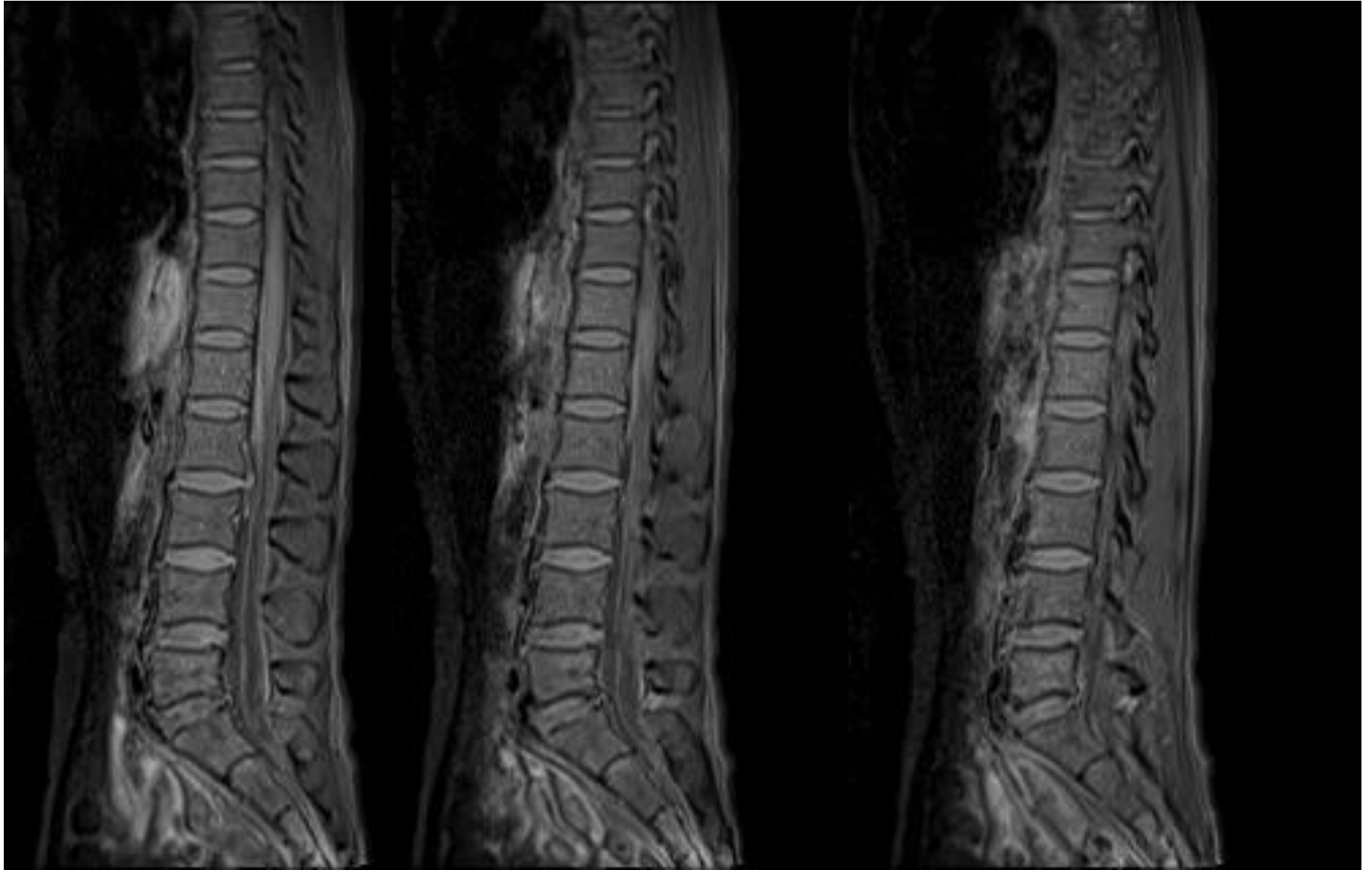
FAT-SAT T2



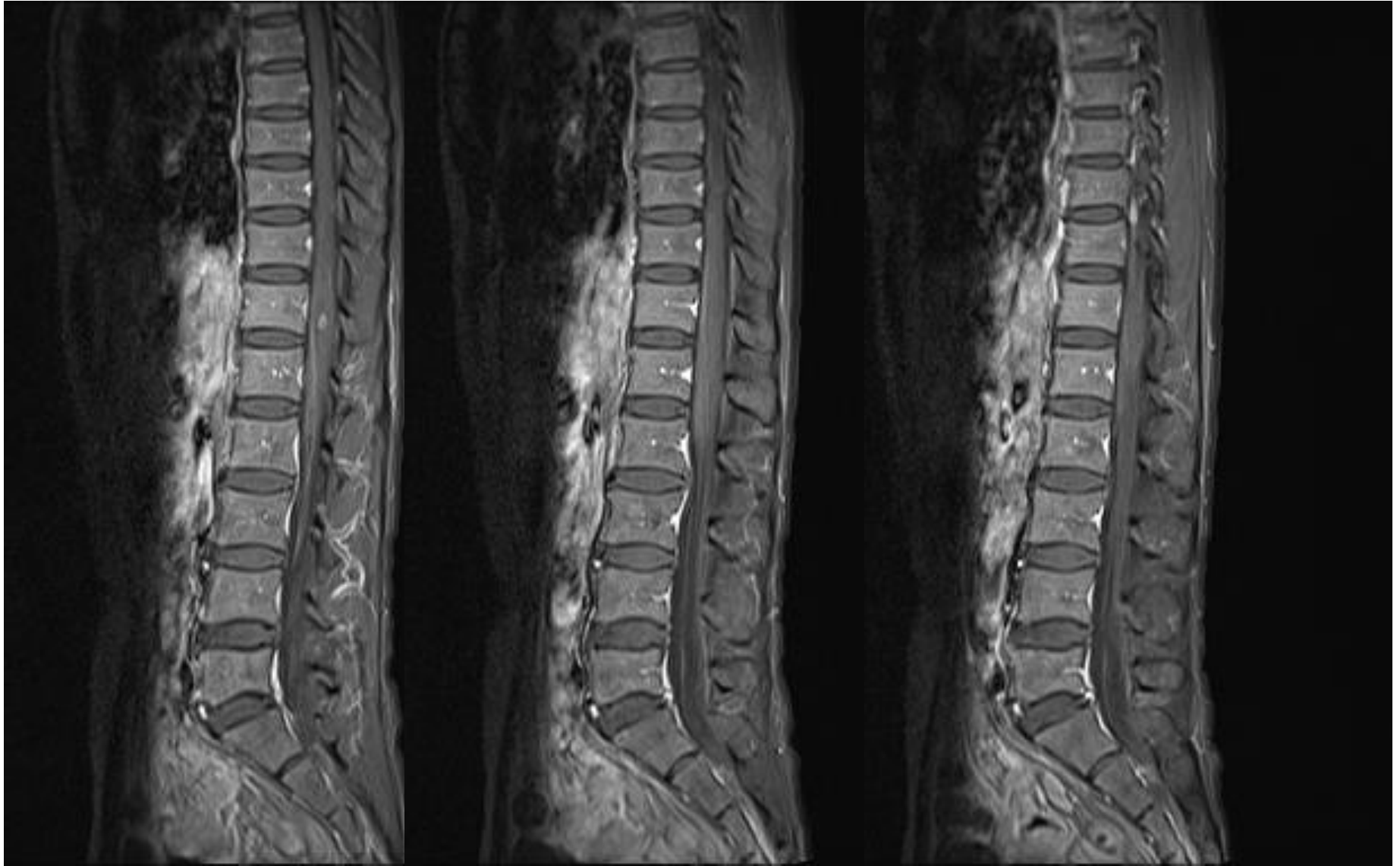
T1



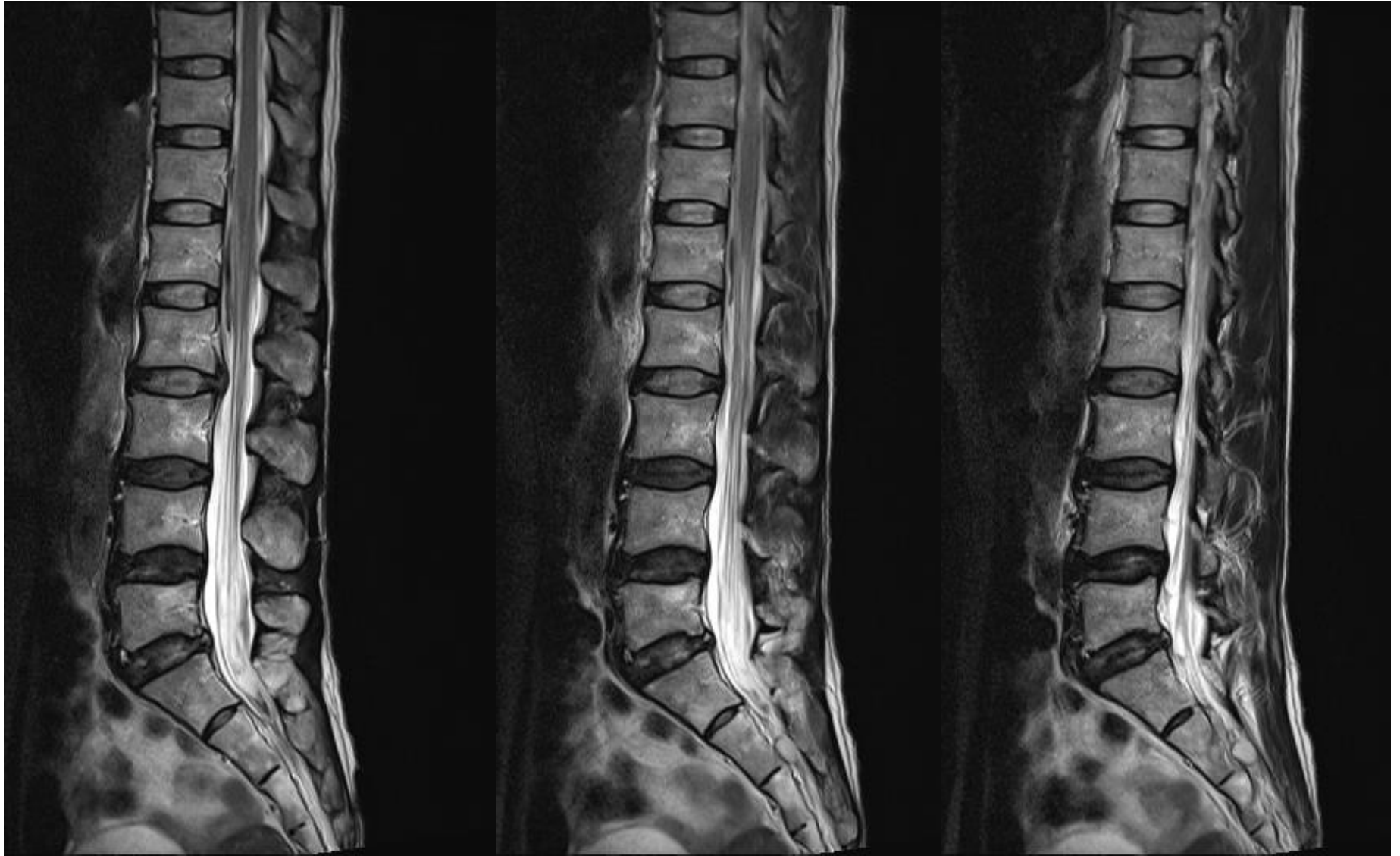
FAT-SAT T1

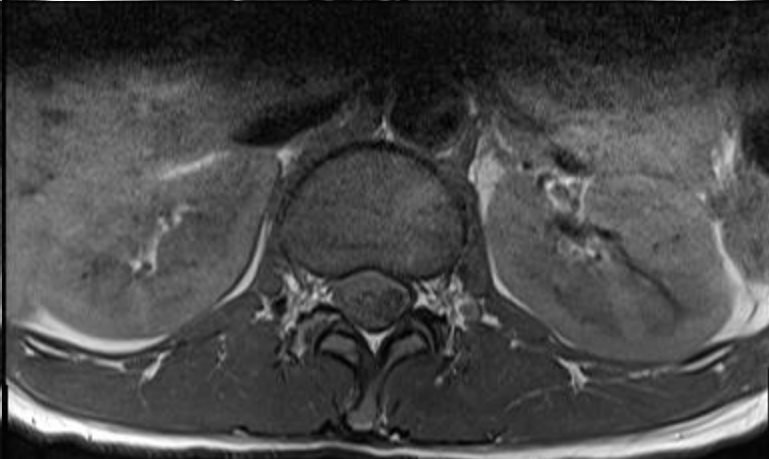
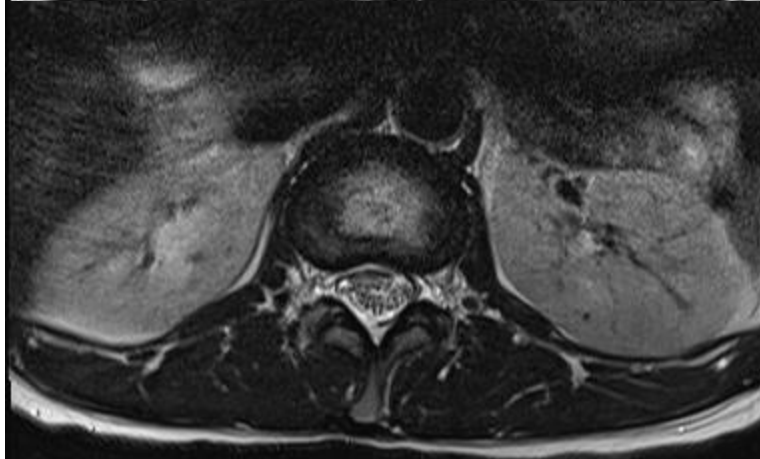
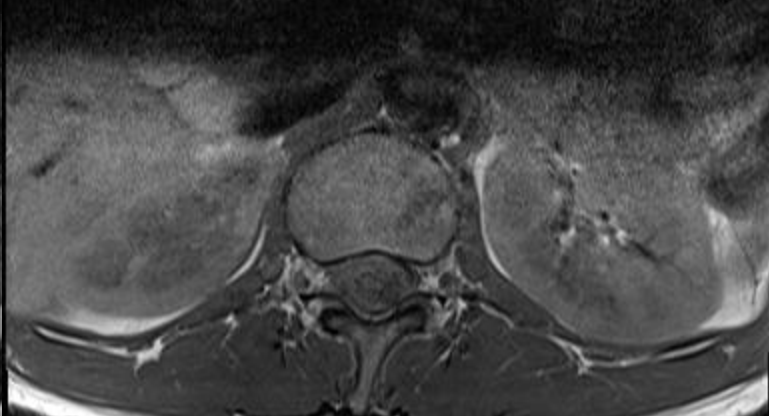
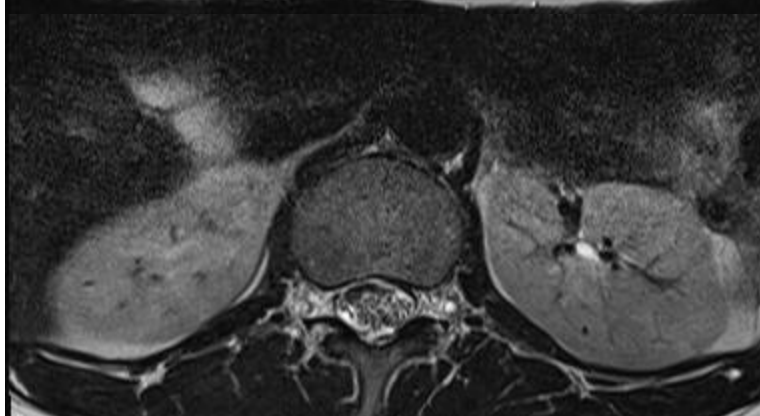
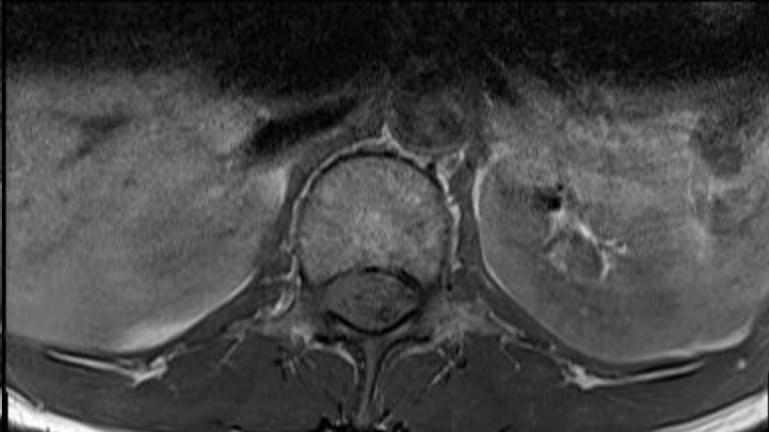
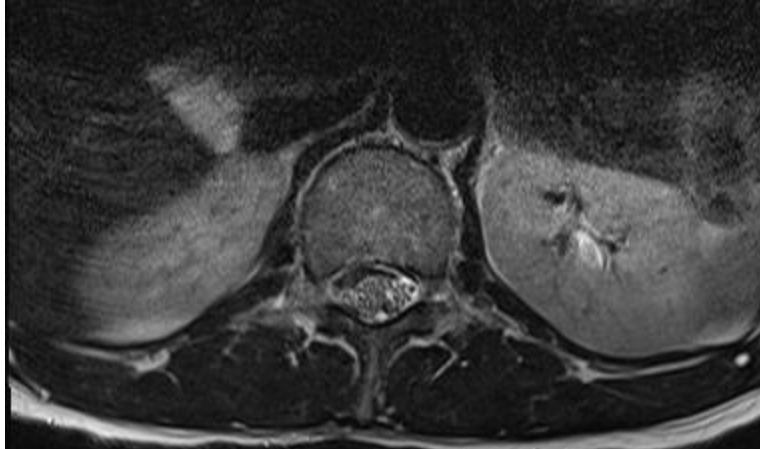


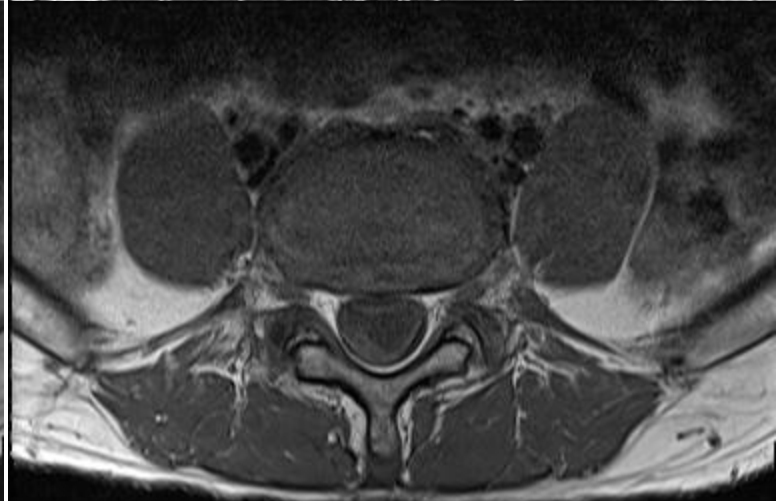
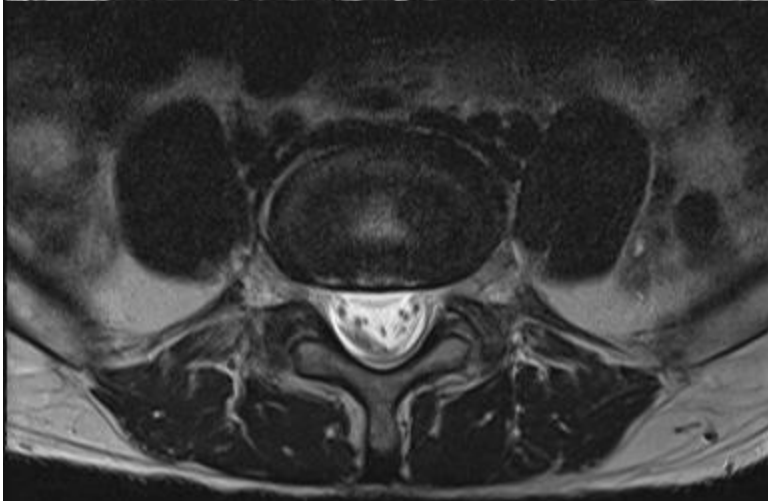
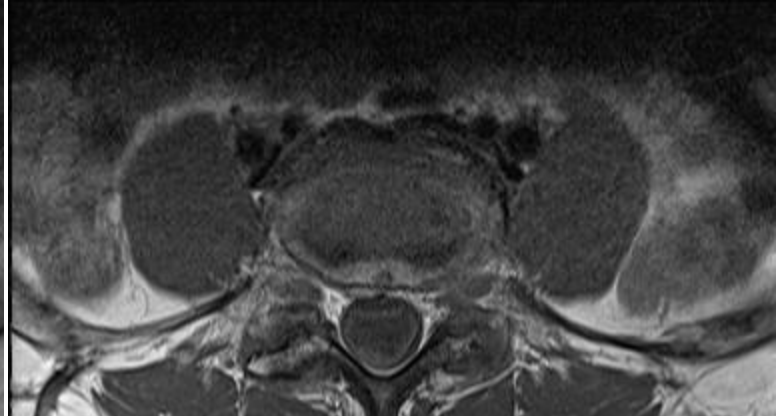
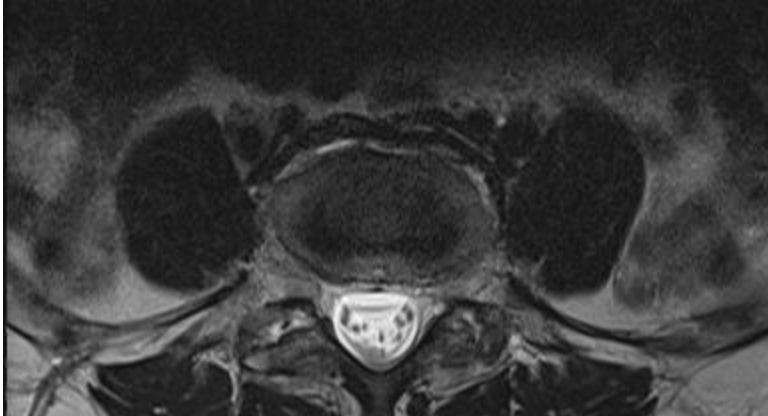
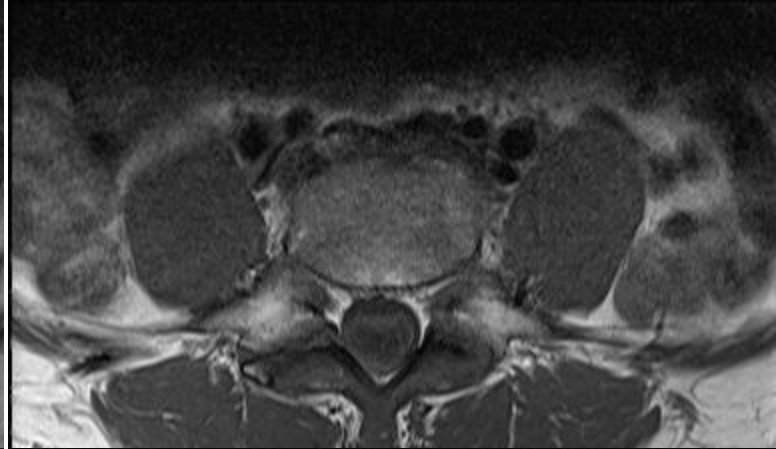
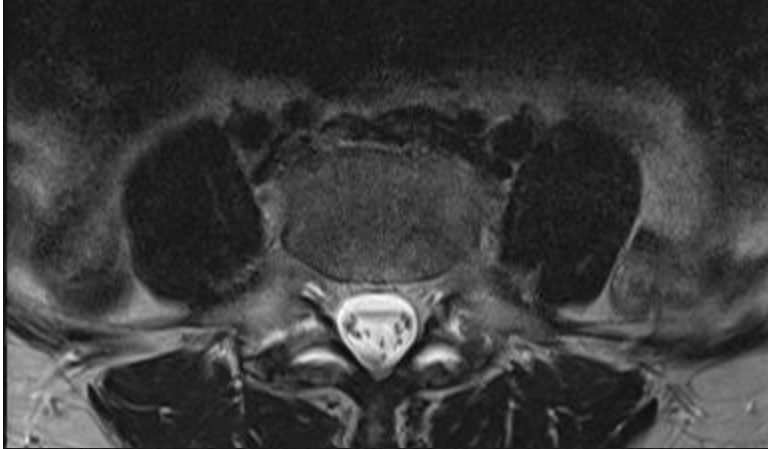
FAT-SAT T1 Gd(+)

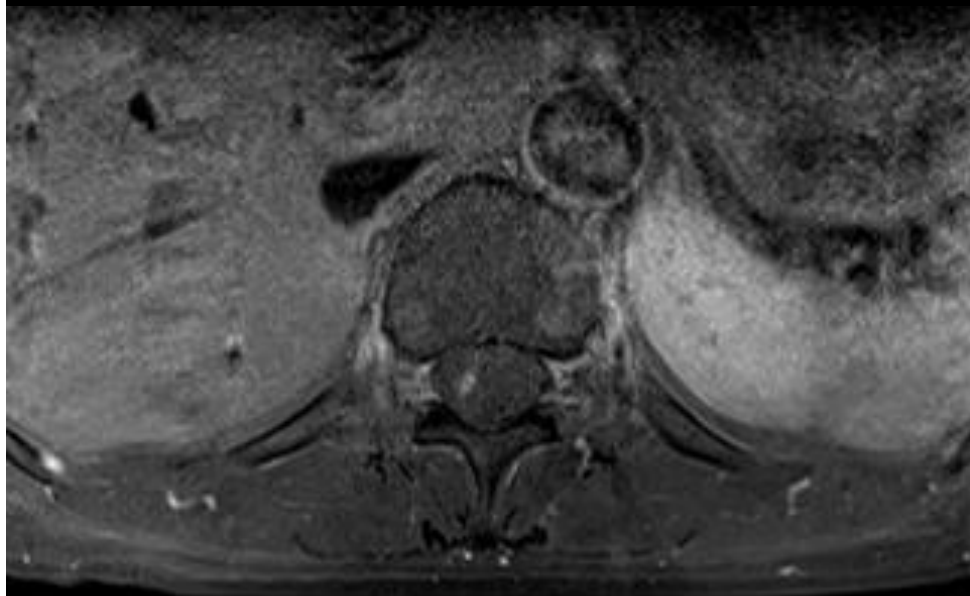
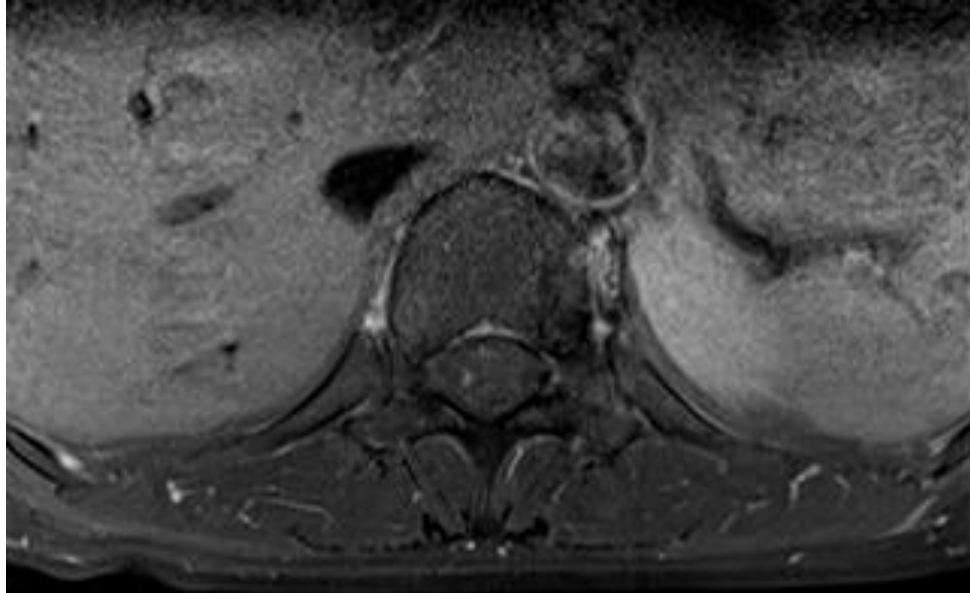


T2

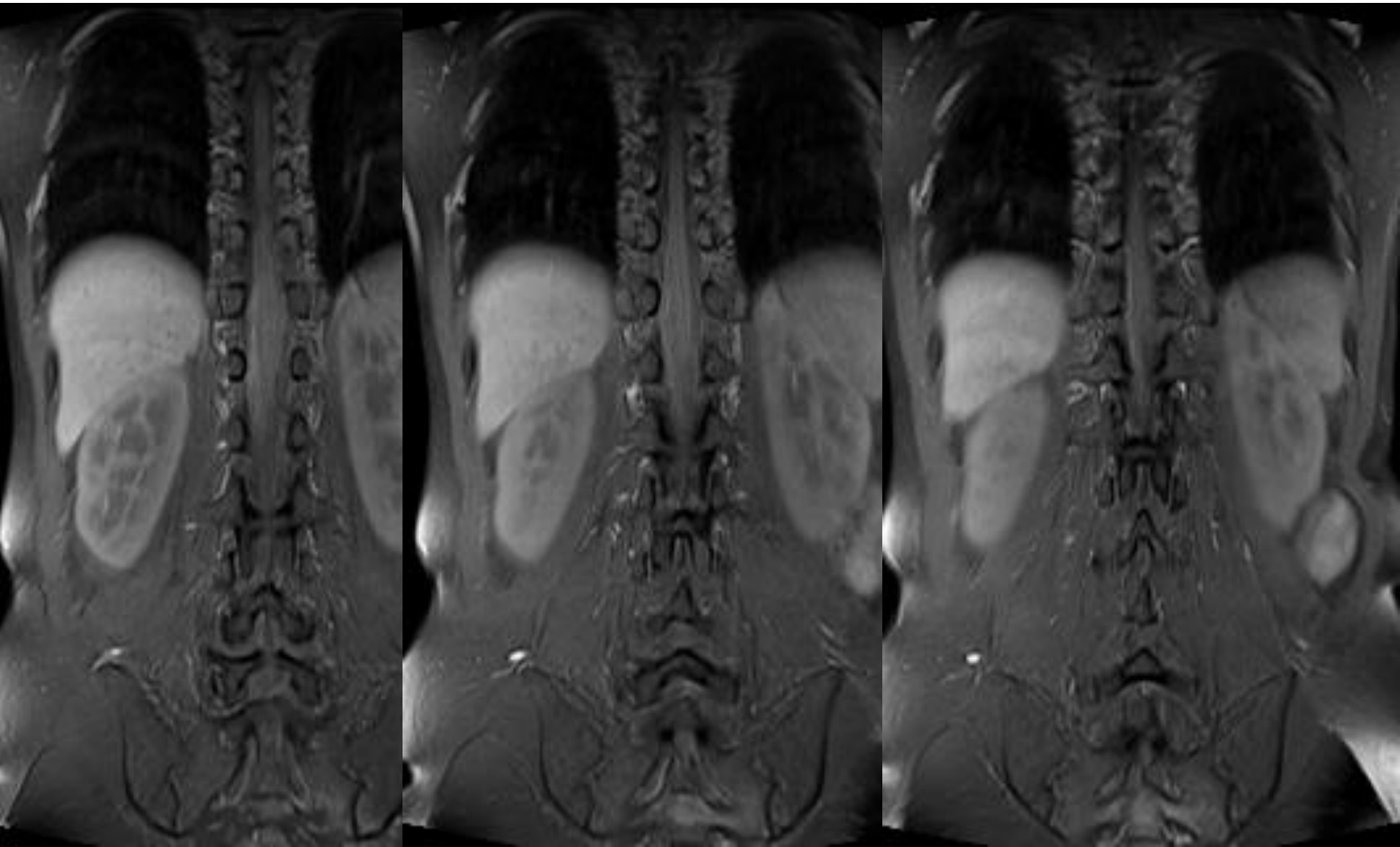




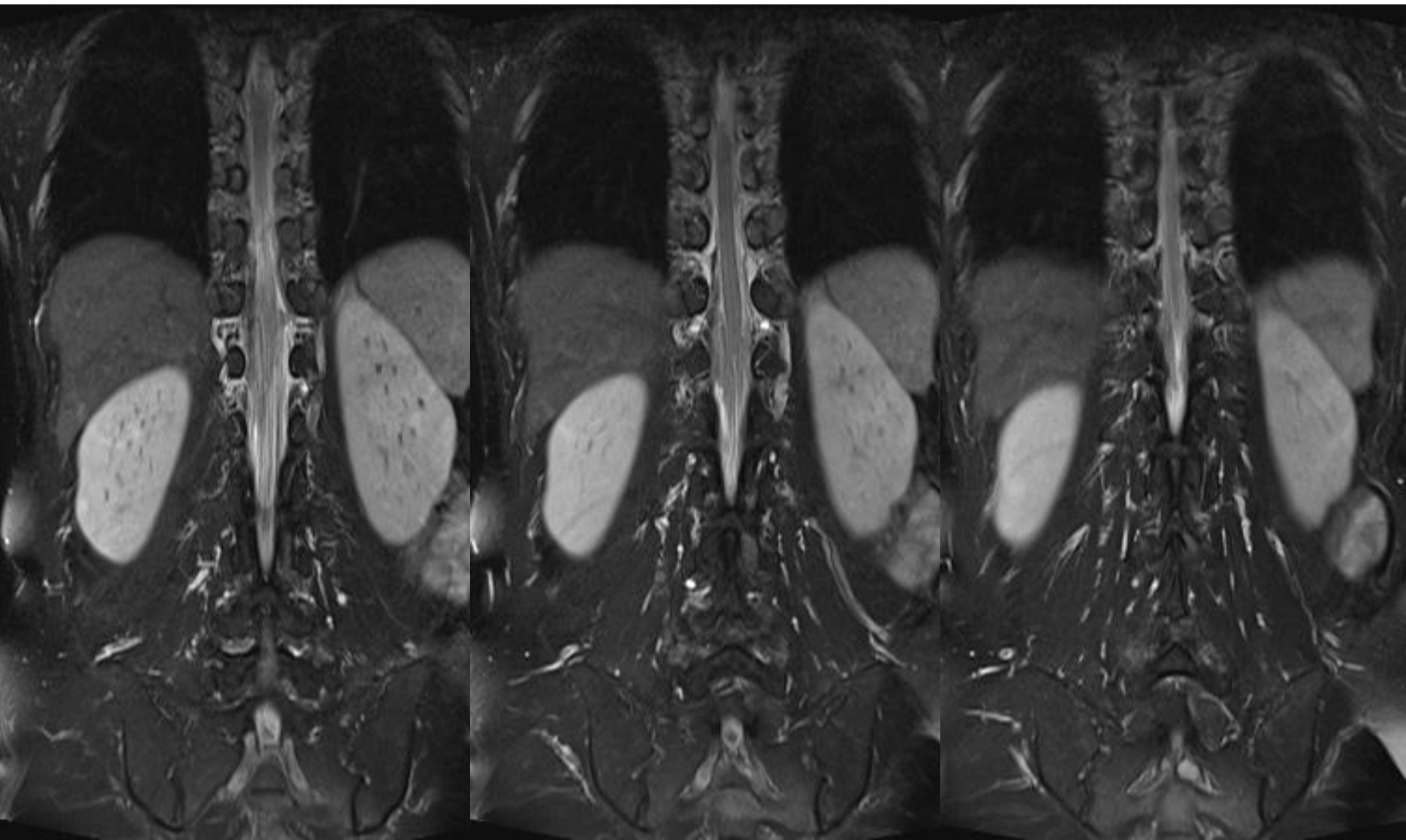




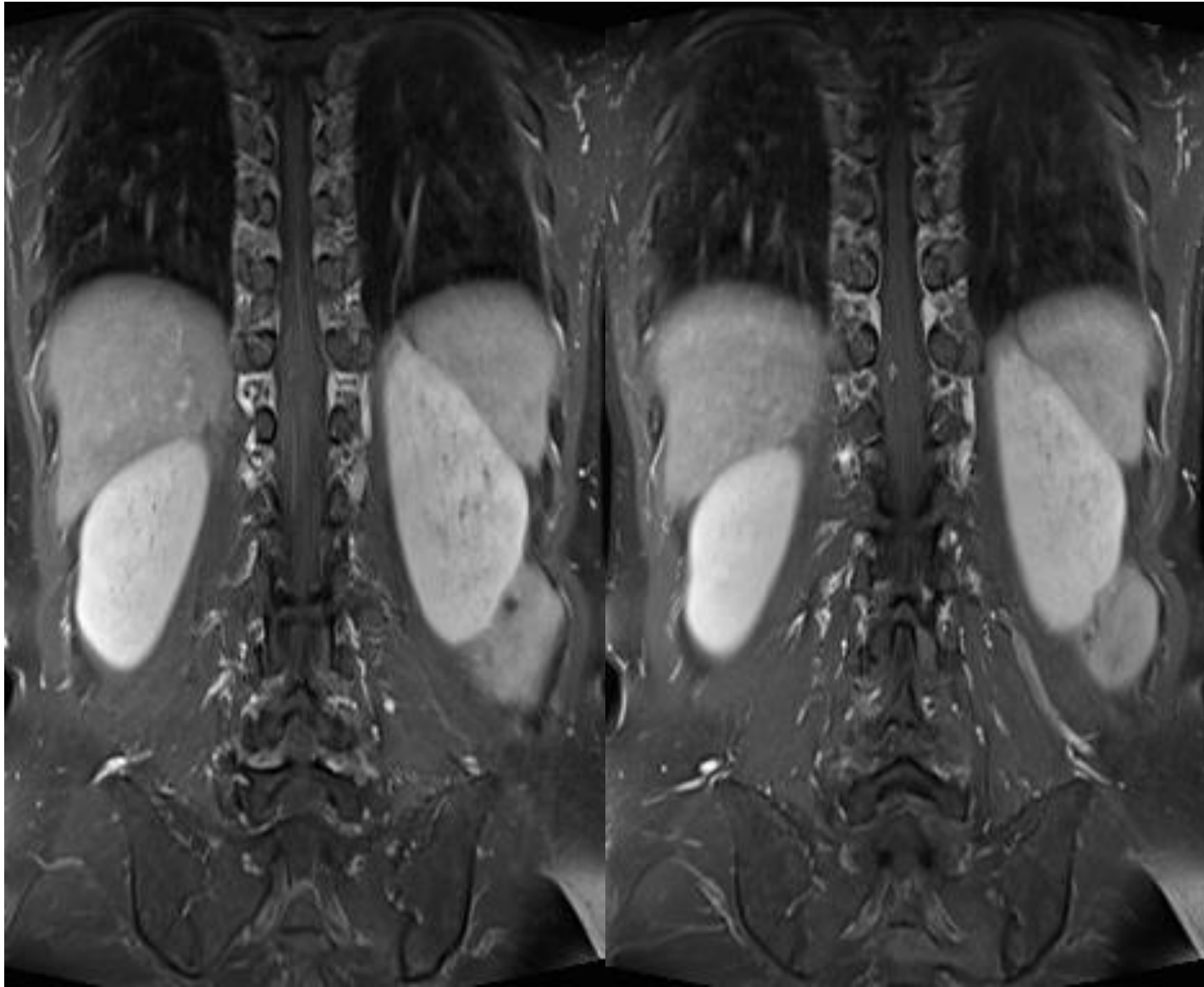
FAT-SAT T1



FAT-SAT T2



FAT-SAT T1 Gd(+)



- Intradural lesions, high SI on T1WI and low SI on T2WI at lower thoracic and lower lumbar spine levels.
- A small nodular Gd-enhanced lesion in the spinal cord.
- What is this? Please, help~