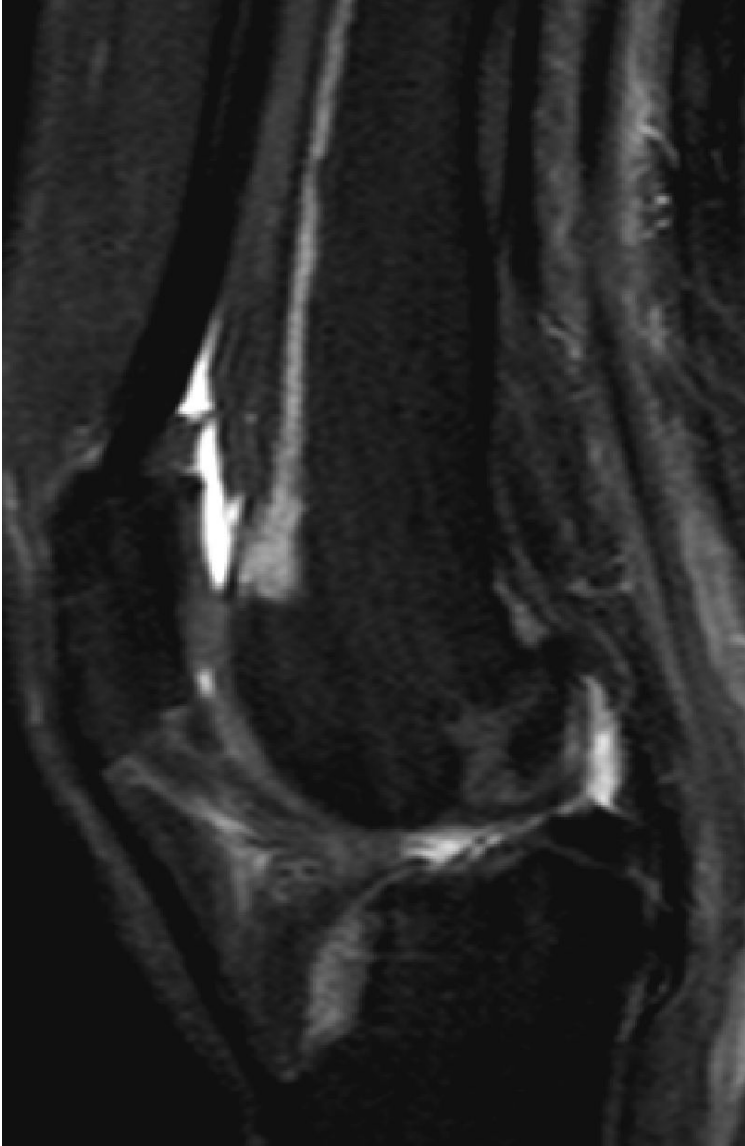
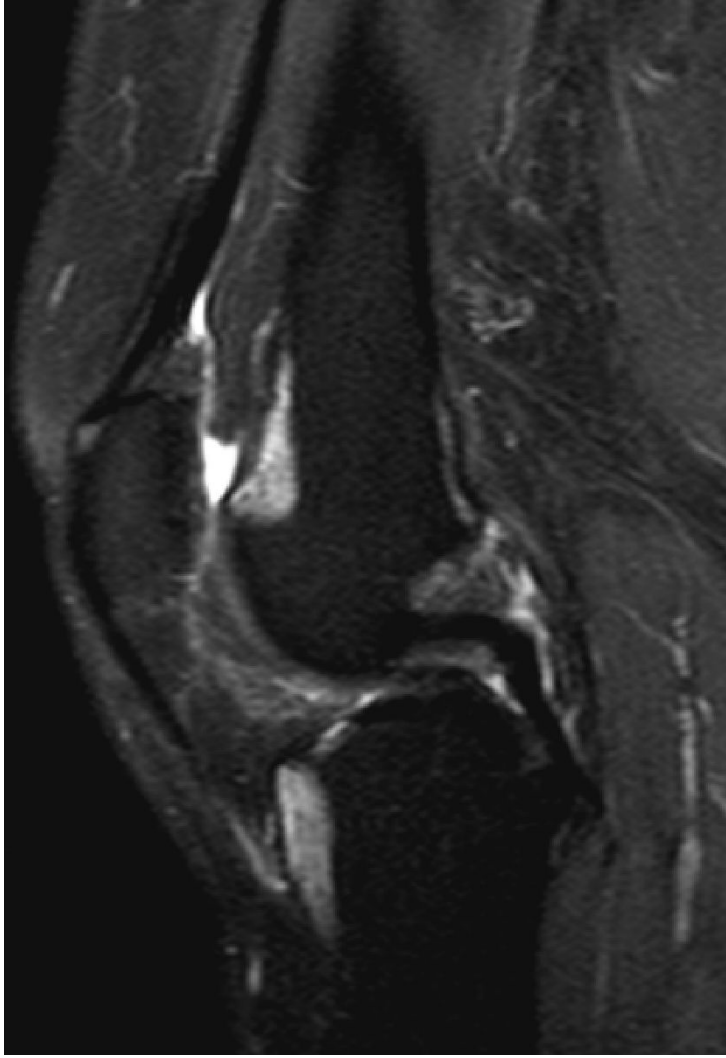
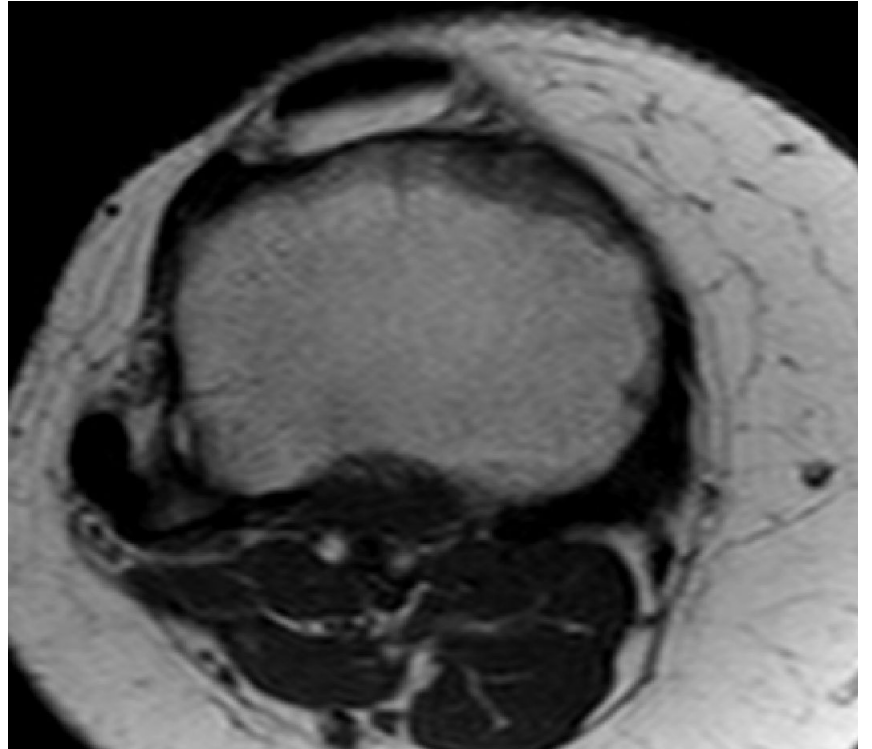
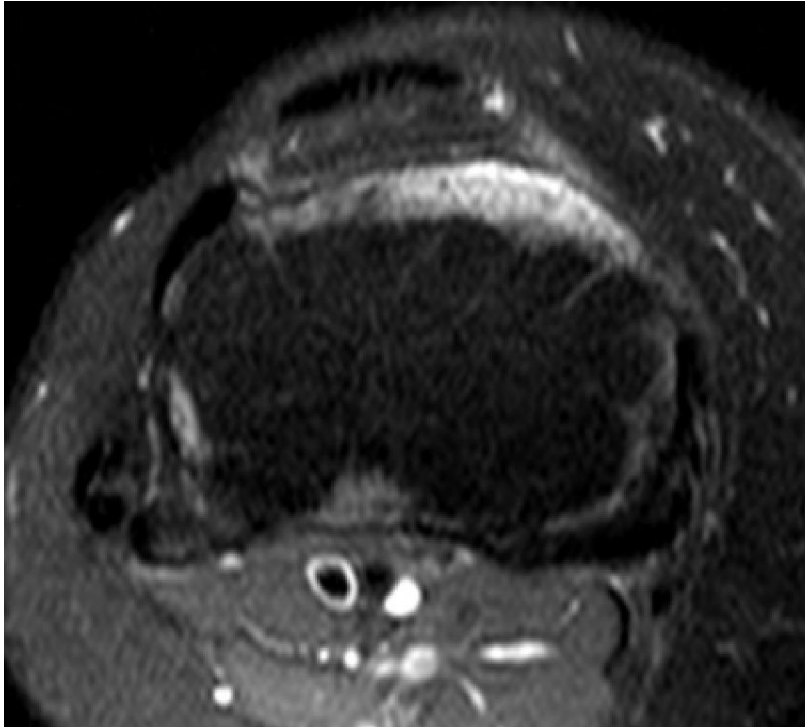
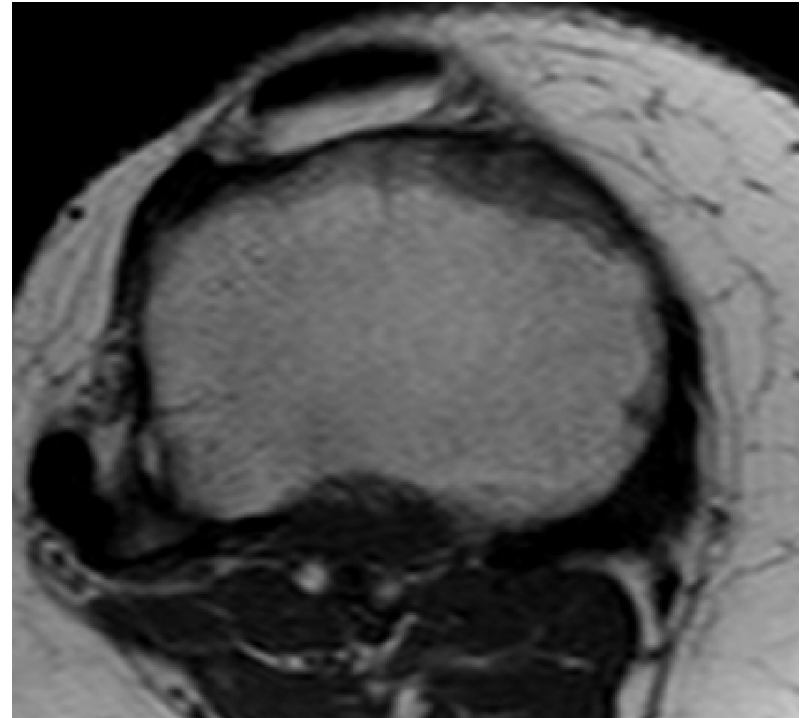
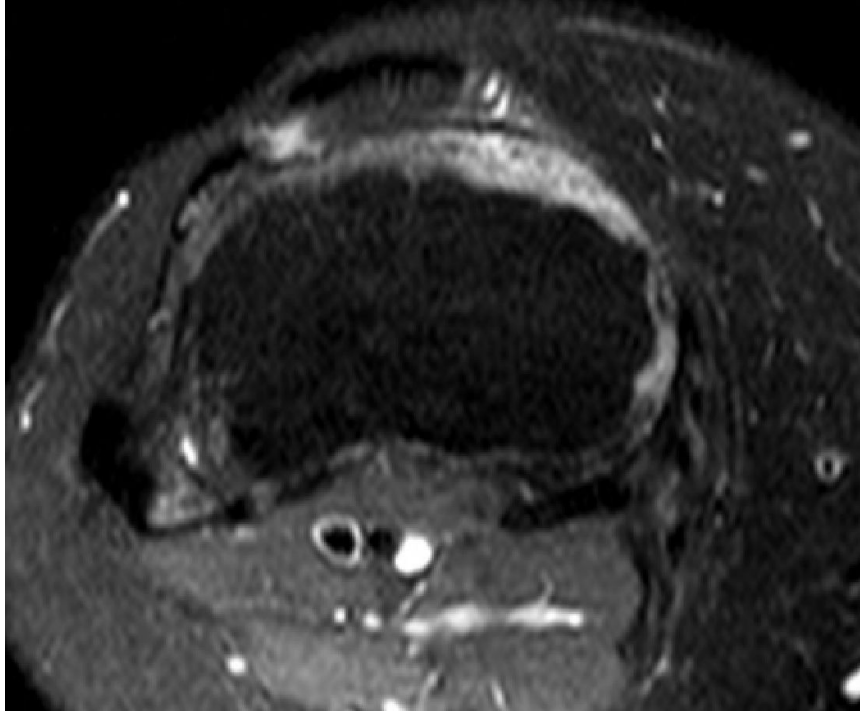


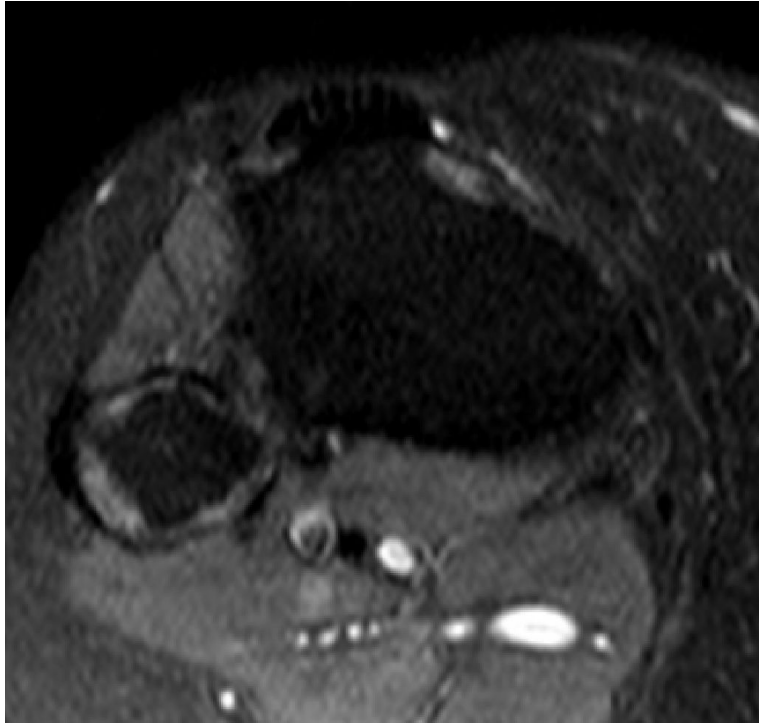
- 53 yr, lady, 8 yrs ago diagnosed as breast cancer, later on with bone metastases,
- Recent both knee pain,
- Medications include Faslodex – estrogen rec blocker & Zometa - biphosphanate

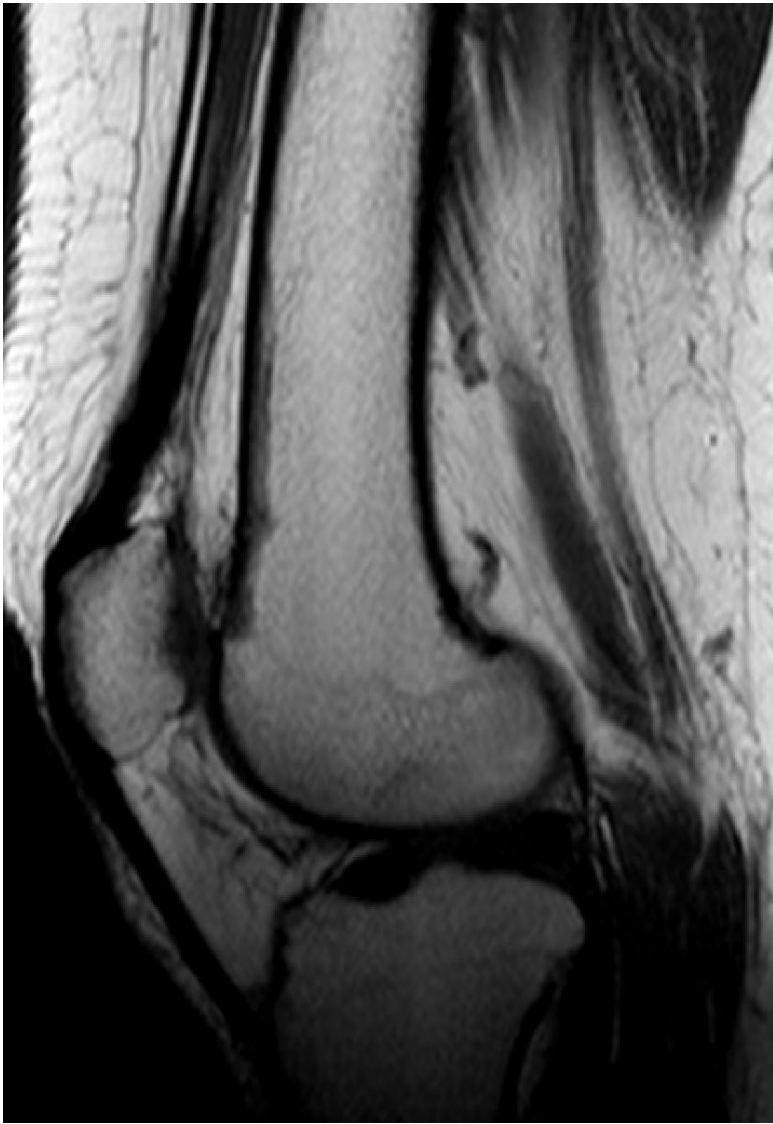






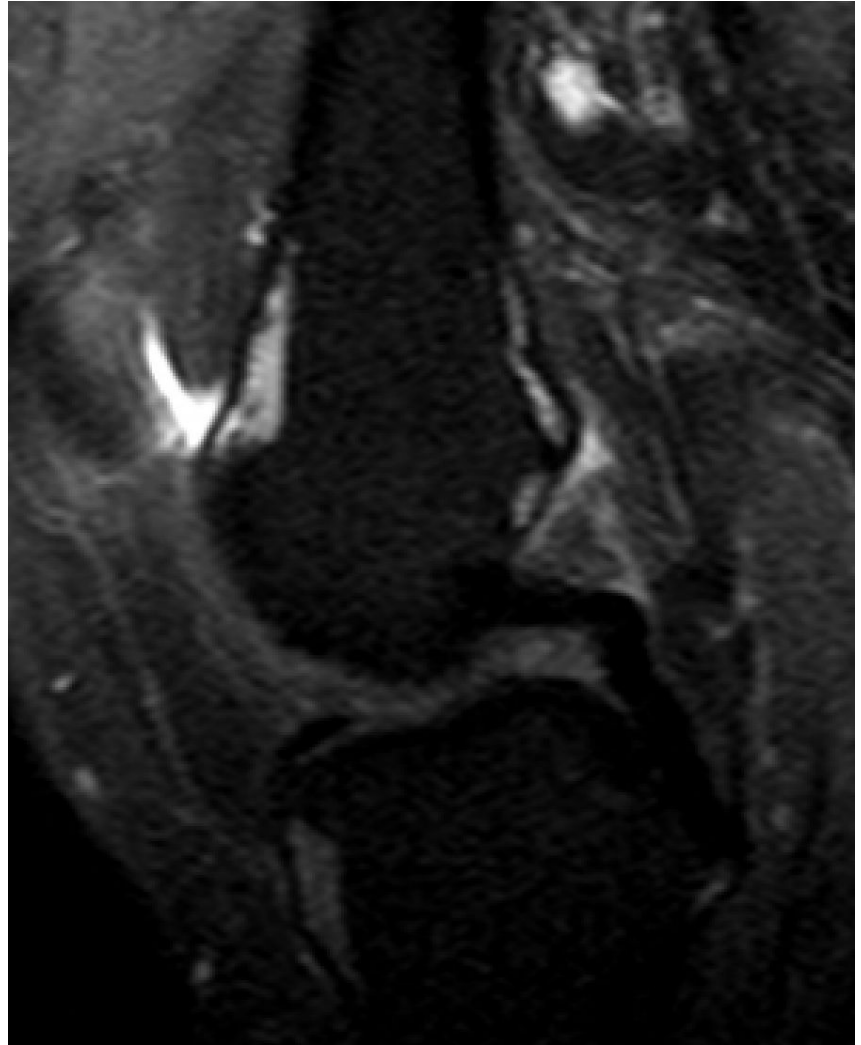






Other knee

Other knee





- Subcortical, almost circumferential intensity change on femur, tibia and fibula, both knees,
- The appearance is almost the same as compared to 2 months ago images,
- Osteoporosis ? Therapy induced changes ? - relevance with pain ?

Thank you,

Hatice Tuba Sanal