

64 year old Female

Neck and arm pain



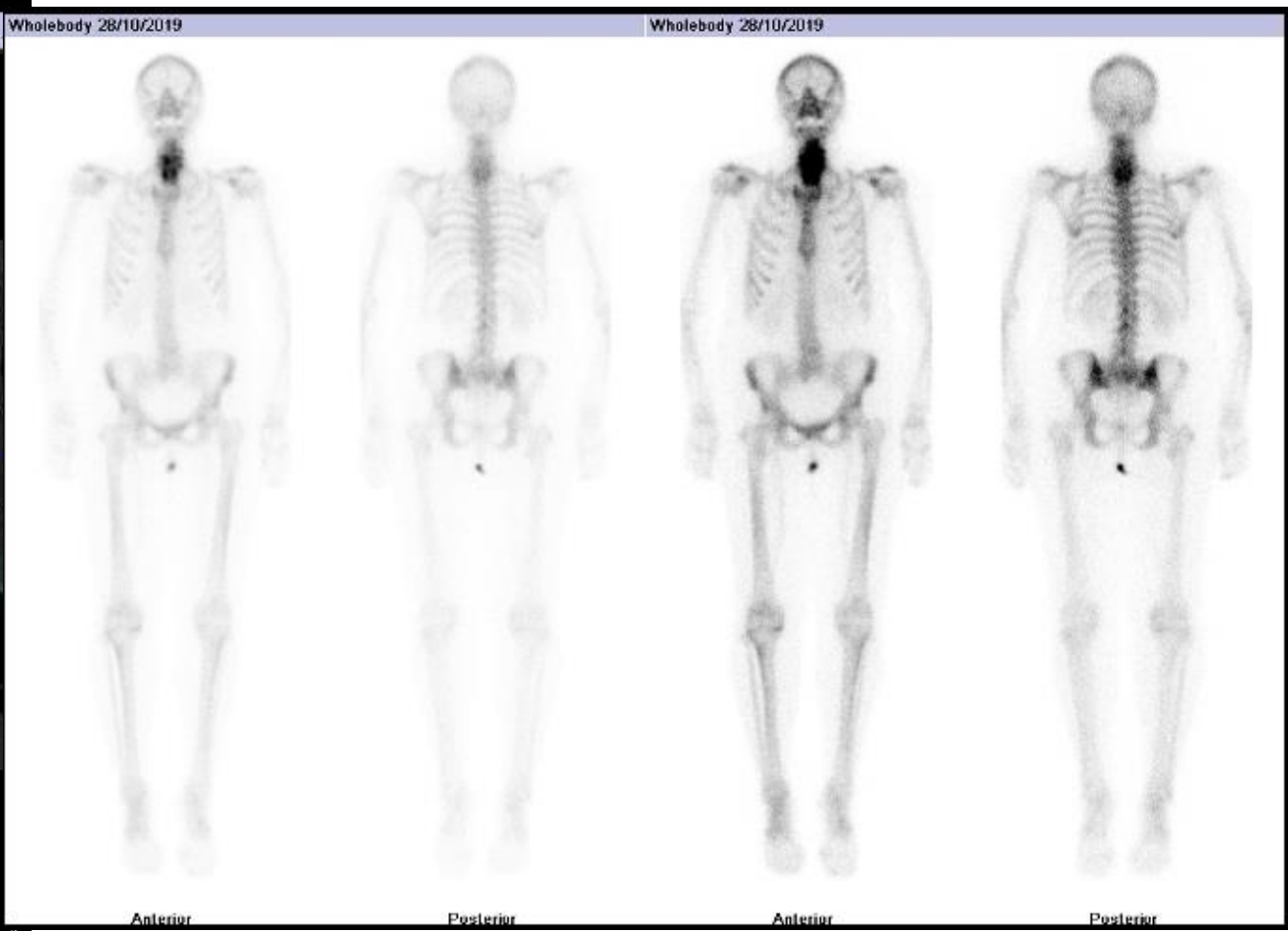
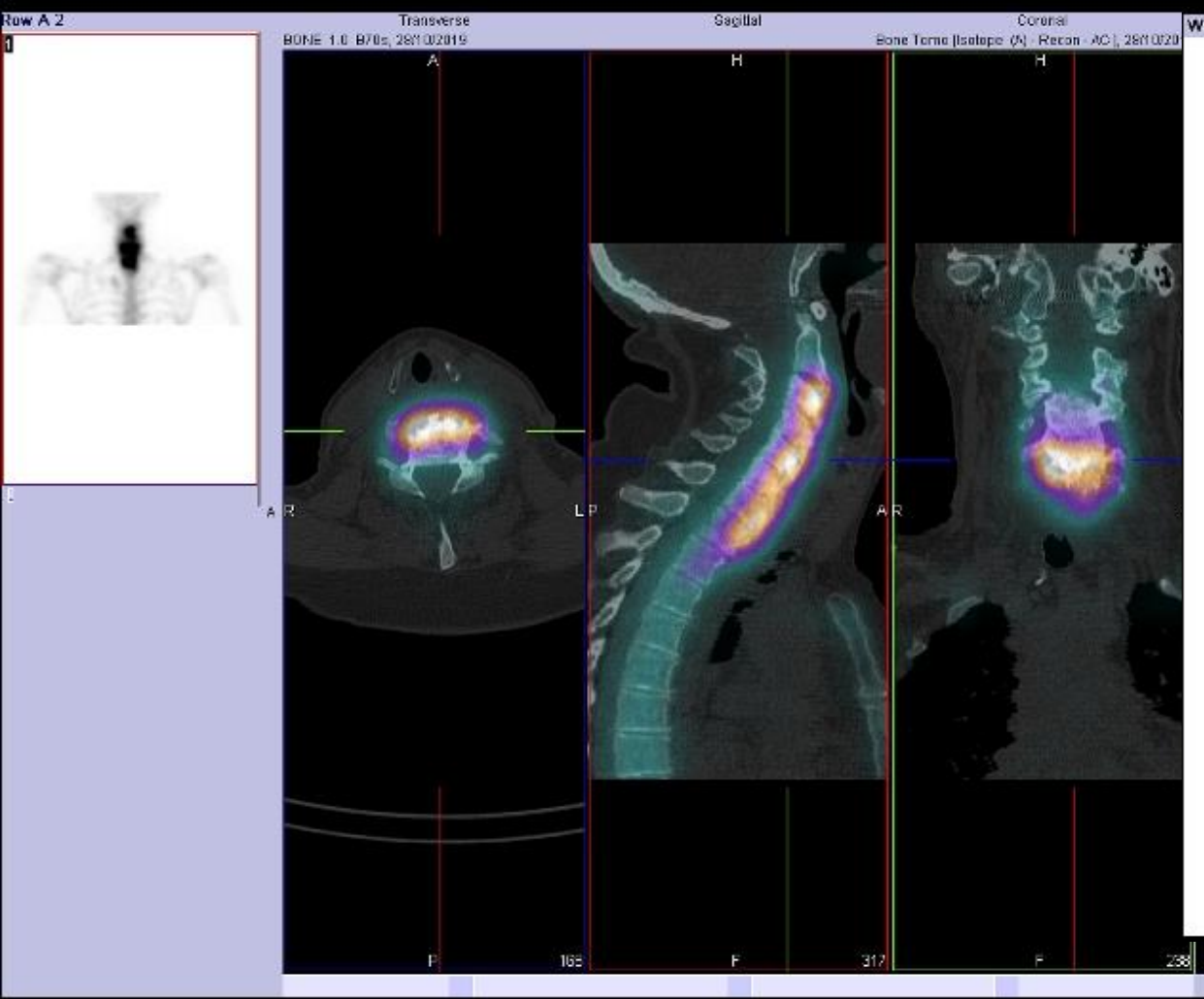


Original X-Ray 2013



Ct 2019

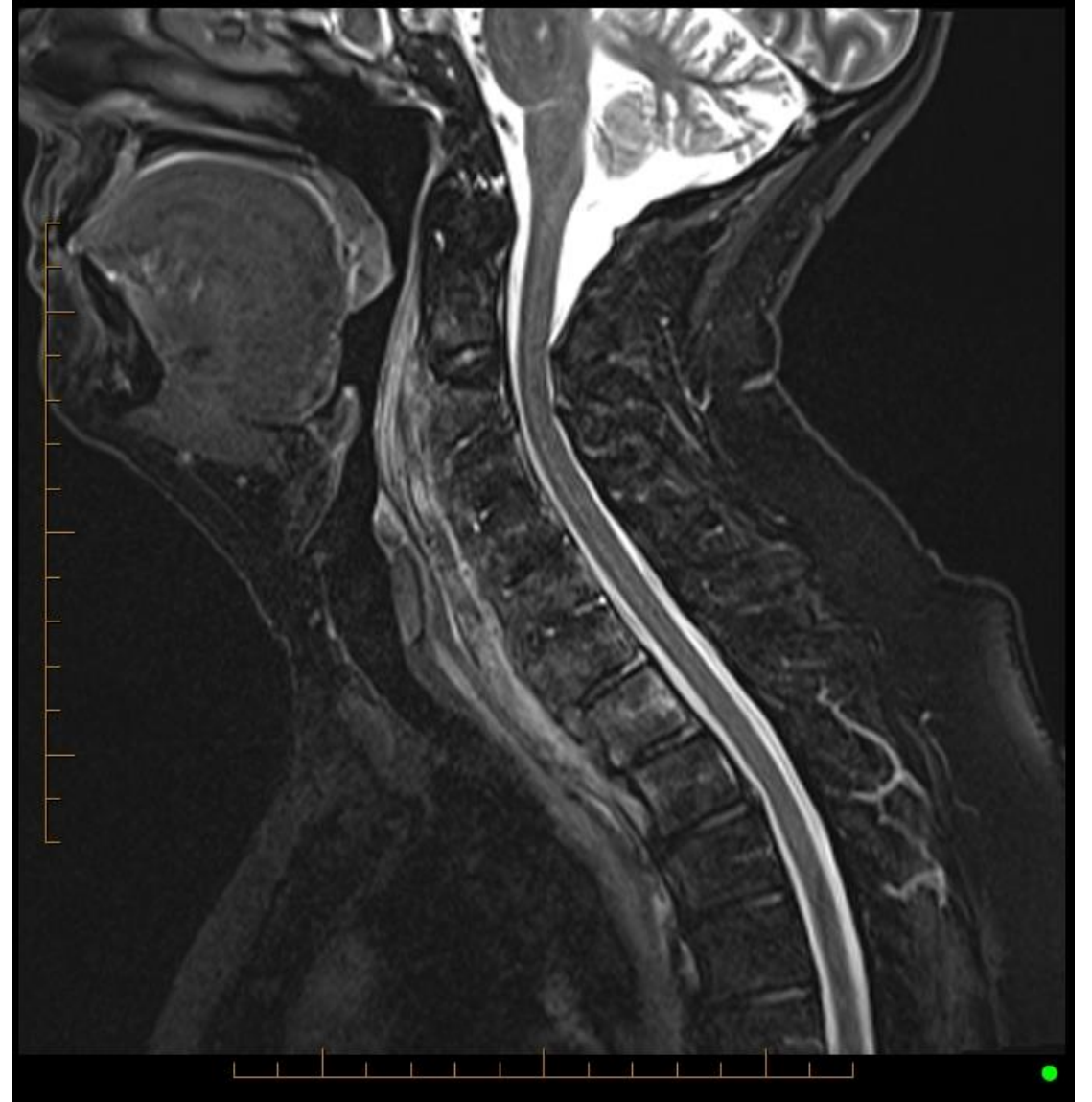
3/12 NECK PAIN TO LEFT
SHOULDER



Bone scan demonstrates Increased activity confined to cervical spine



T1



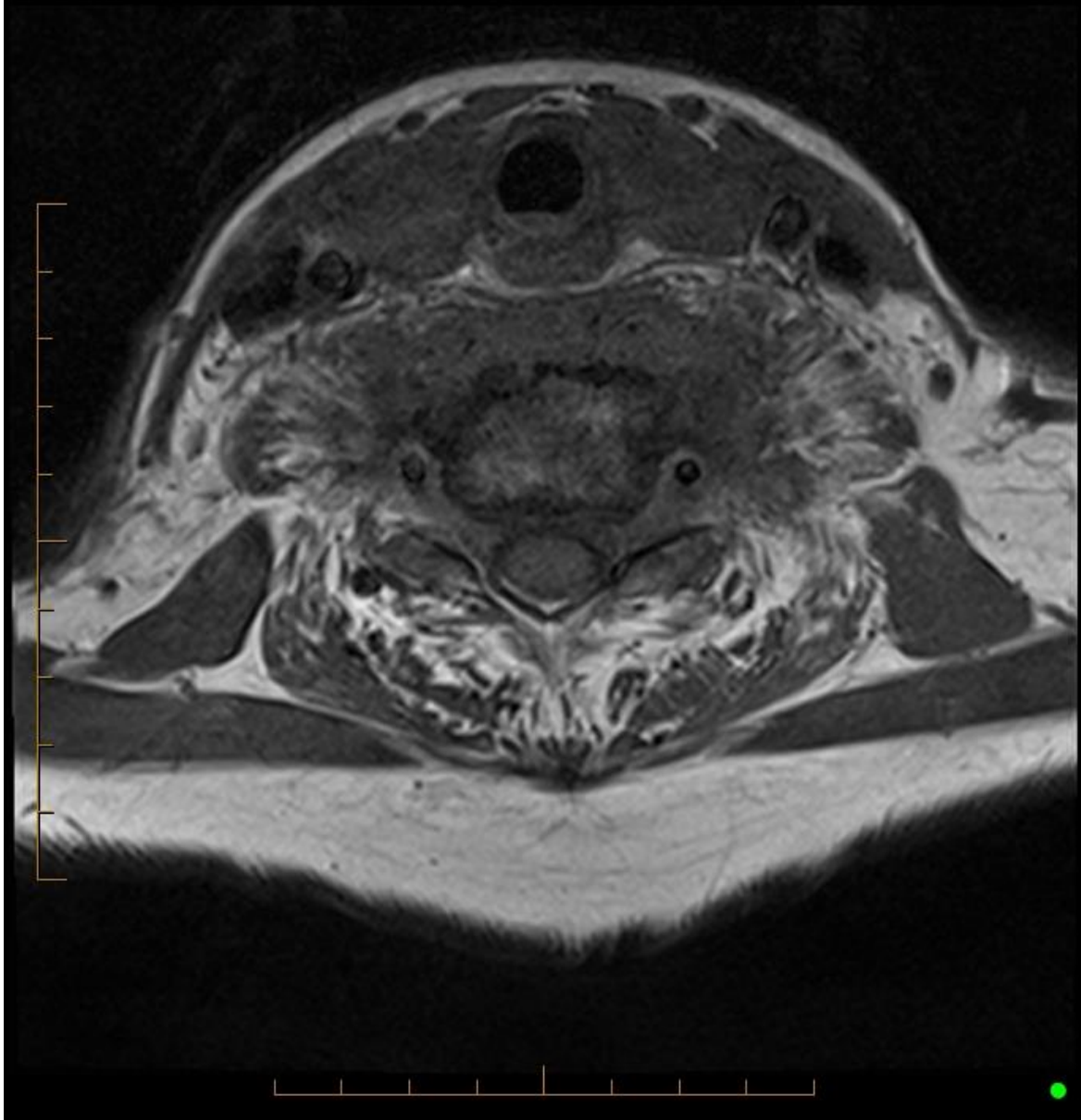
T2



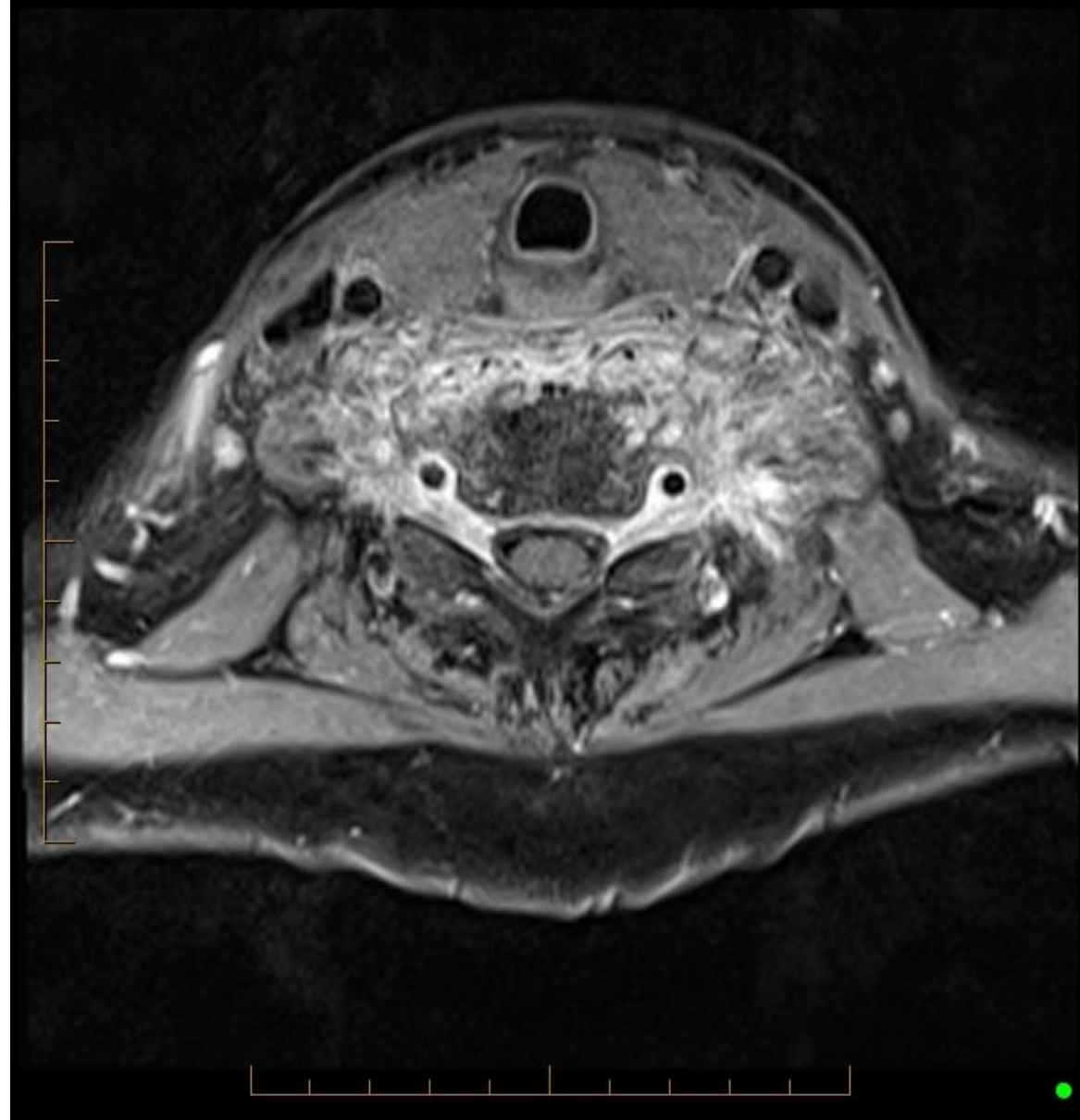
- Stir



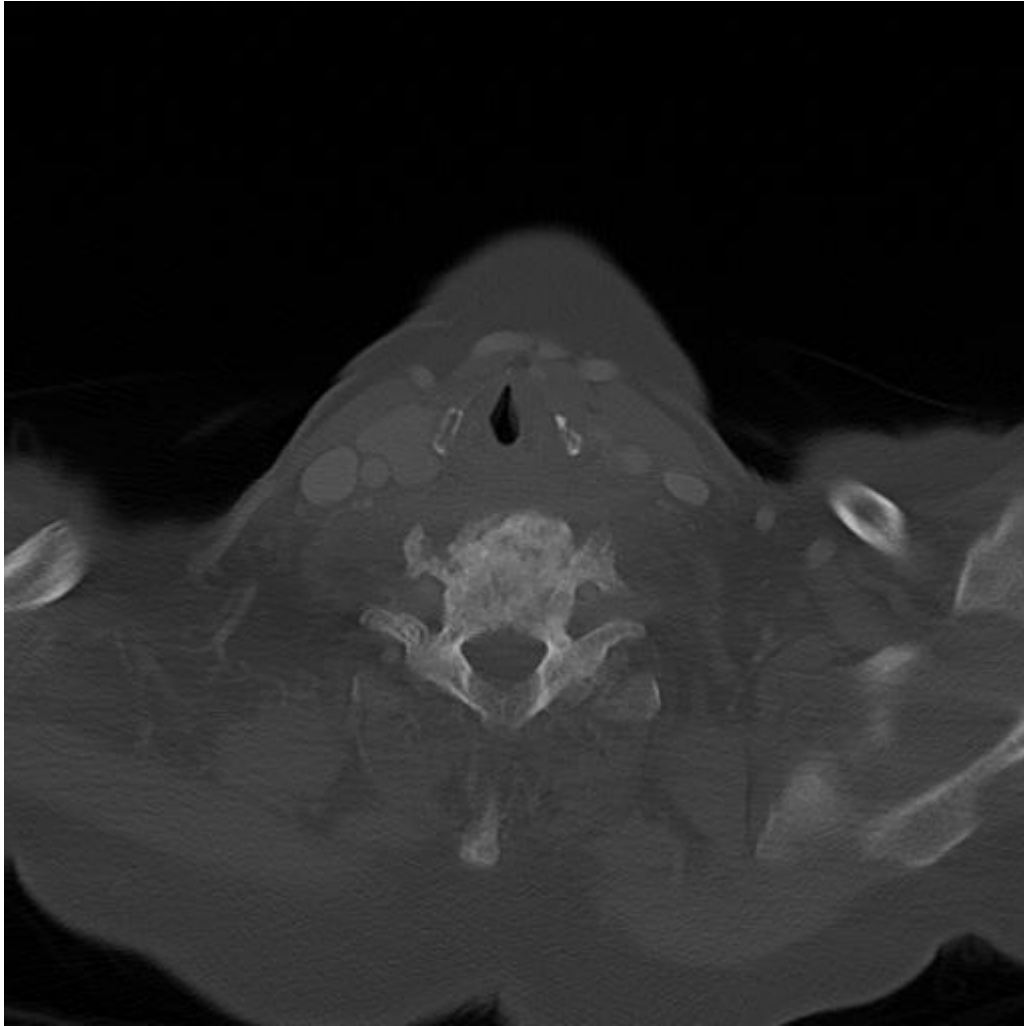
T1FS post gad



T1



T1FS post gad



Soft tissue biopsy



PRECERVICAL SOFT TISSUE MASS BIOPSY.

MACROSCOPIC

(Precervical soft tissue mass).

Two biopsies 5 and 13mm and one 1mm fragment. (JK:at).

MICROSCOPIC

The sections show core biopsies of skeletal muscle and fibrovascular connective tissue and a small amount of adipose tissue. There is no significant inflammation. There is no calcium or amyloid deposition. There are no features of malignancy.

DIAGNOSIS

Precervical soft tissue mass core biopsy - Fibrovascular tissue, adipose tissue and skeletal muscle showing no significant histological abnormality.