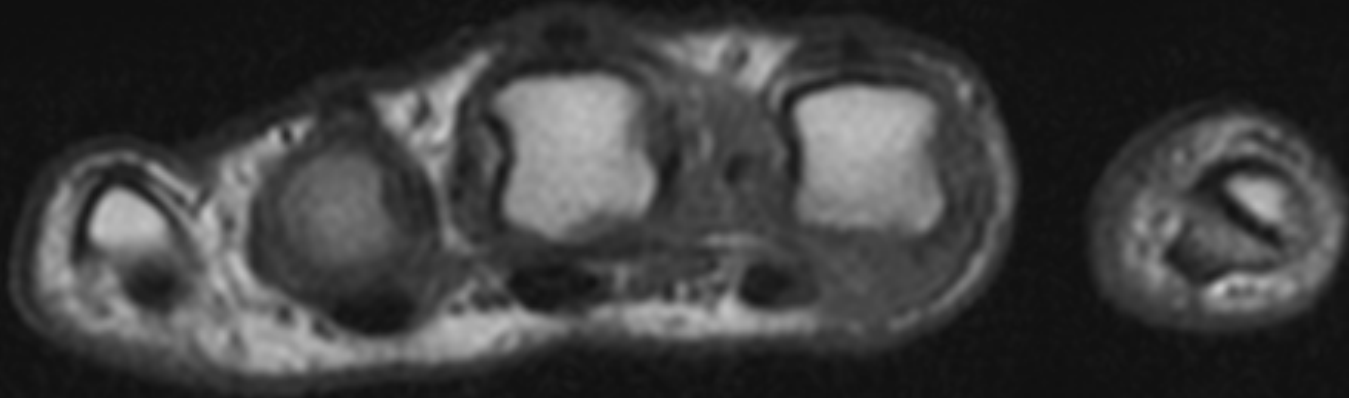


- ✓ 37 Y FEMALE
- ✓ "DULL" PAIN FOR ABOUT 1 YEAR IN THE HEAD OF THE MC2 THAT INCREASES WITH THE EFFORTS
- ✓ NO TRAUMA
- ✓ NEUTROPENIA SINCE 2013 WITH 3 NEGATIVE MEDULLARY BONE BIOPSY
- ✓ LABORATORY TEST NEGATIVE FOR INFLAMMATORY INDICES
- ✓ LABORATORY EVALUATIONS NEGATIVE FOR RHEUMATIC DISEASES

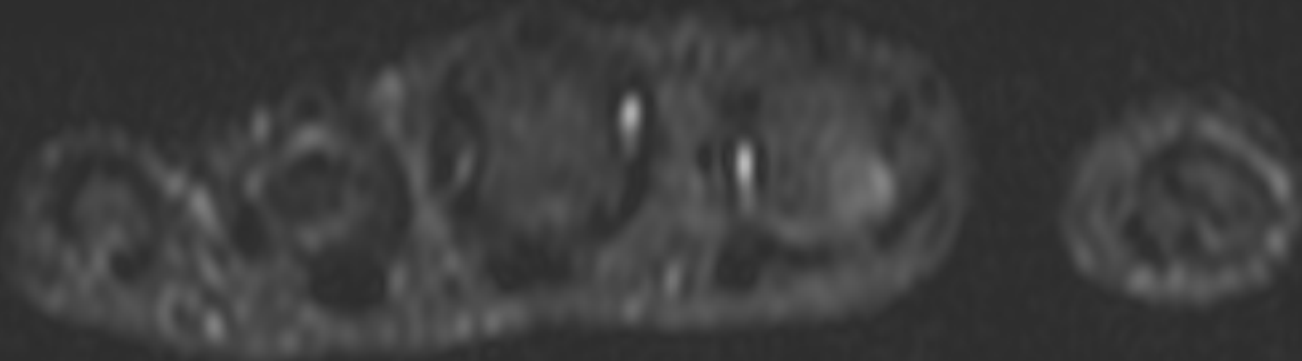
November 2020



November 2020



SET1



SET2-FS

November 2020

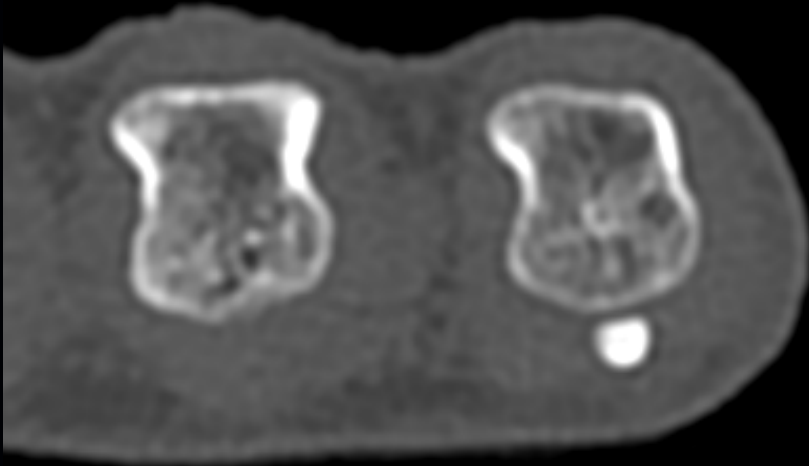
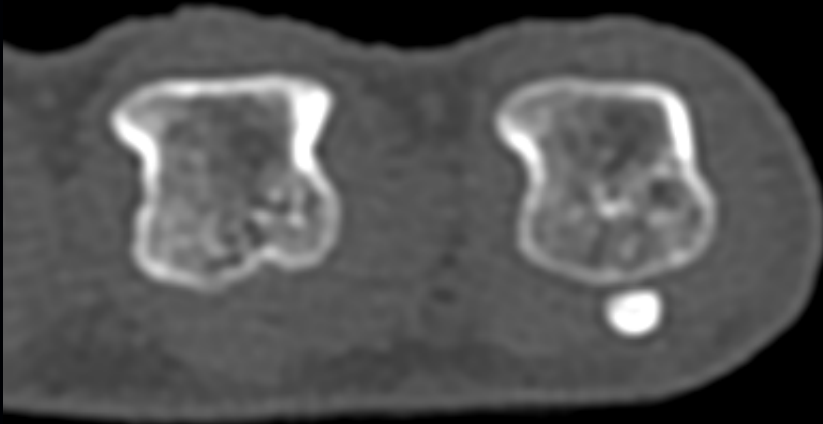


SET2-FS

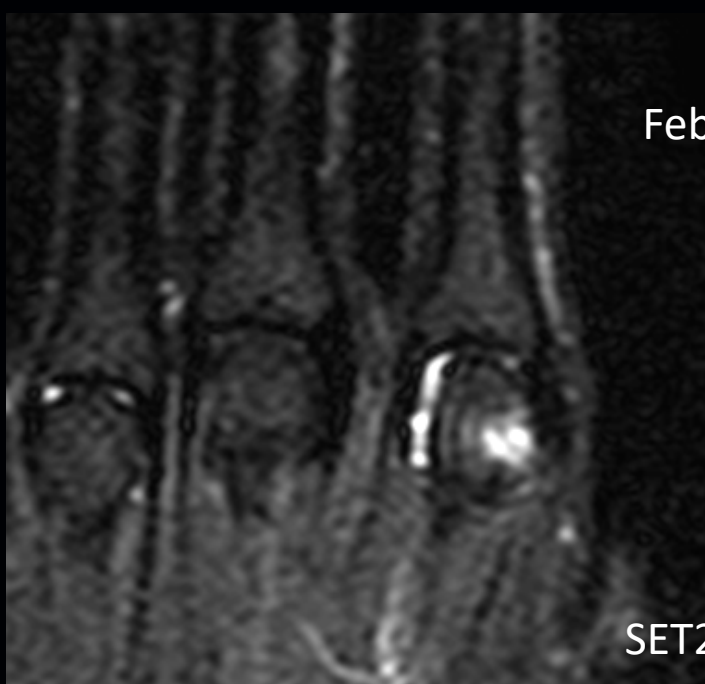


SPGR-T2

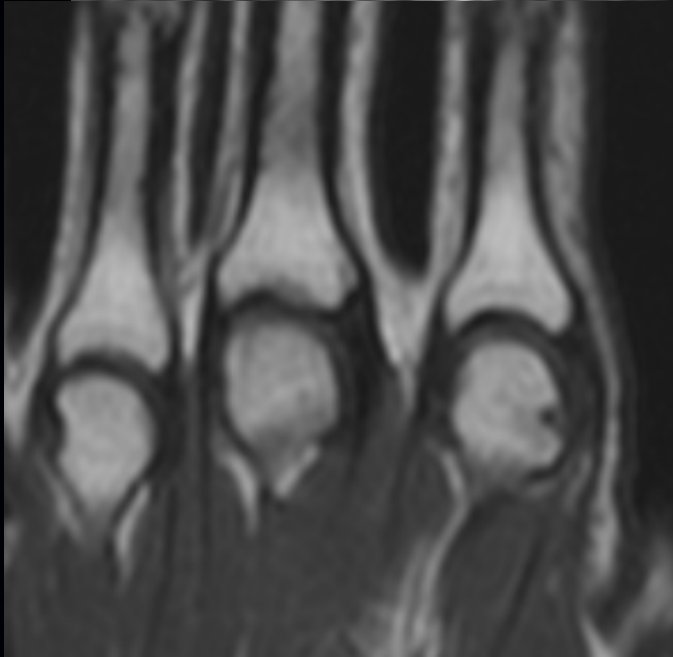
November 2020



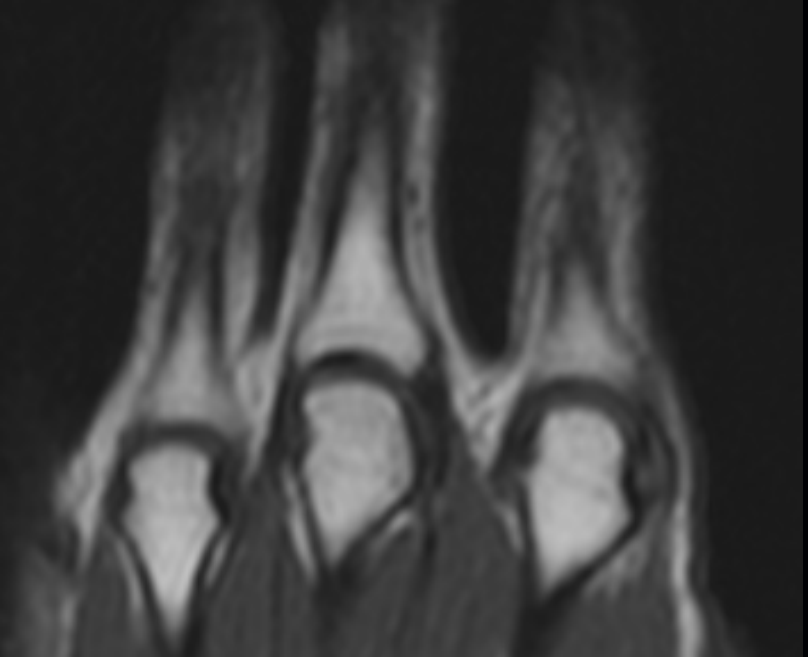
February 2021



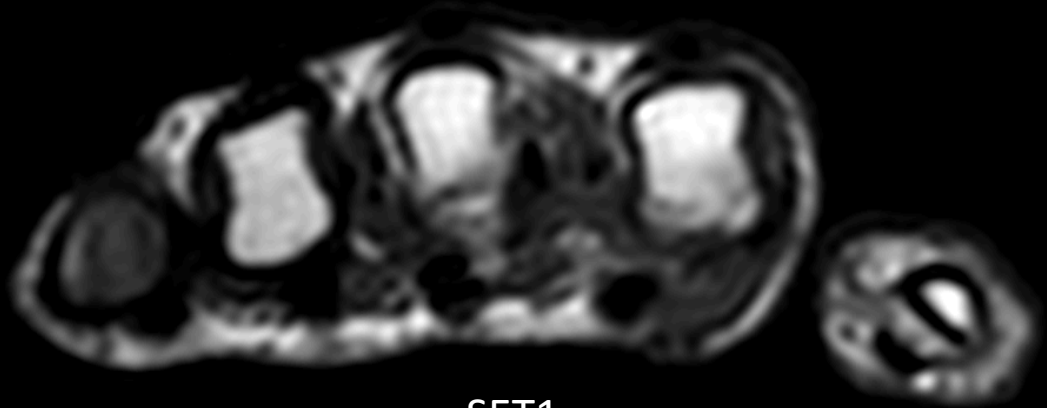
SET2-FS



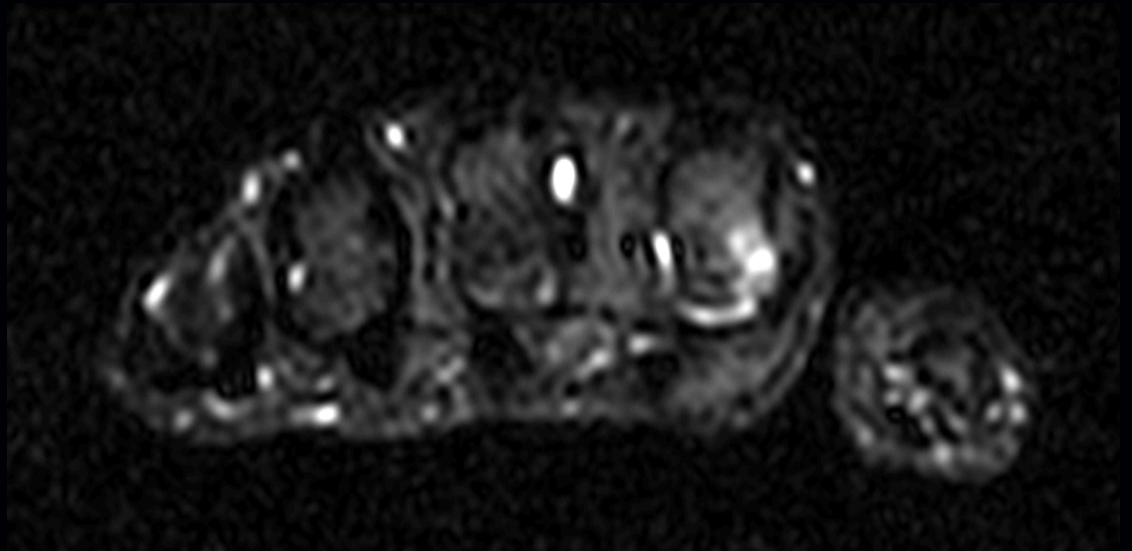
SET1



February 2021



SET1



SET2-FS

YOUR SUGGESTIONS ???

THANK YOU!!!

