

72 yr F (The patient is my mother...)

Presents with pathological fracture of Fibula – 2 weeks history already of pain after very minor injury

No known malignancies or other relevant medical history

Staging CT scan and mammogram reveal no identifiable primary tumour.

Could this still be a benign lesion?



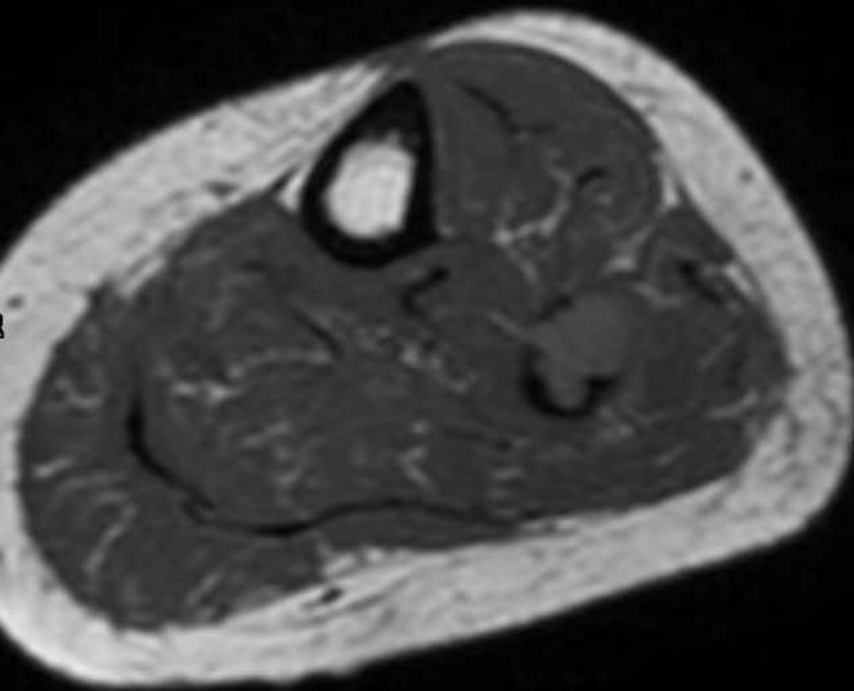


T1

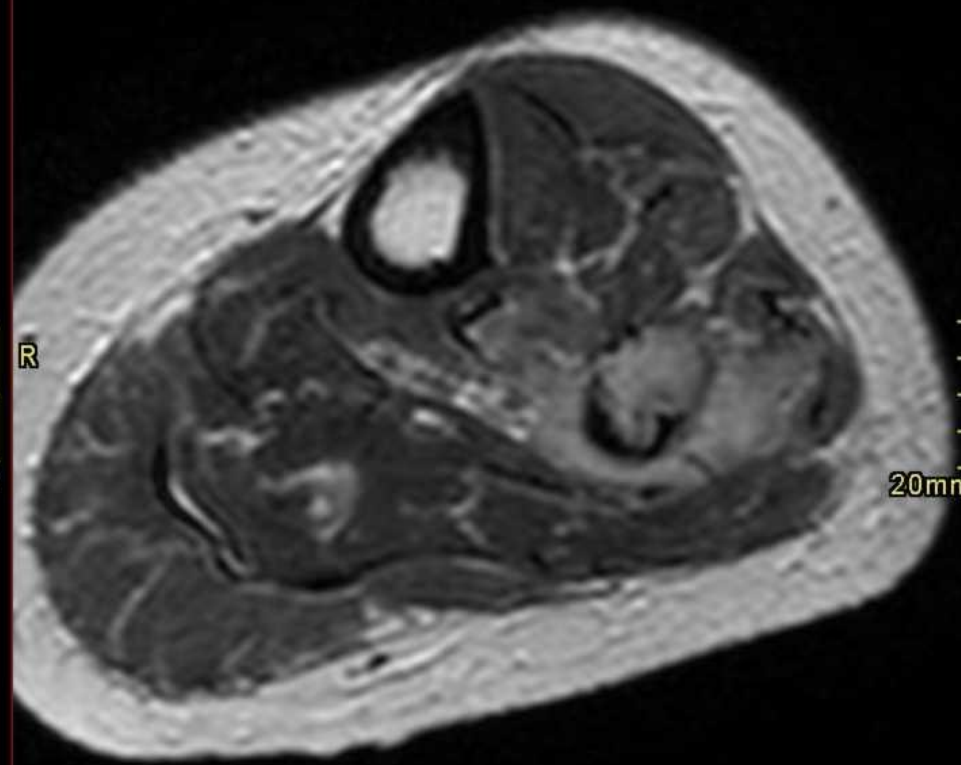
40mm
R



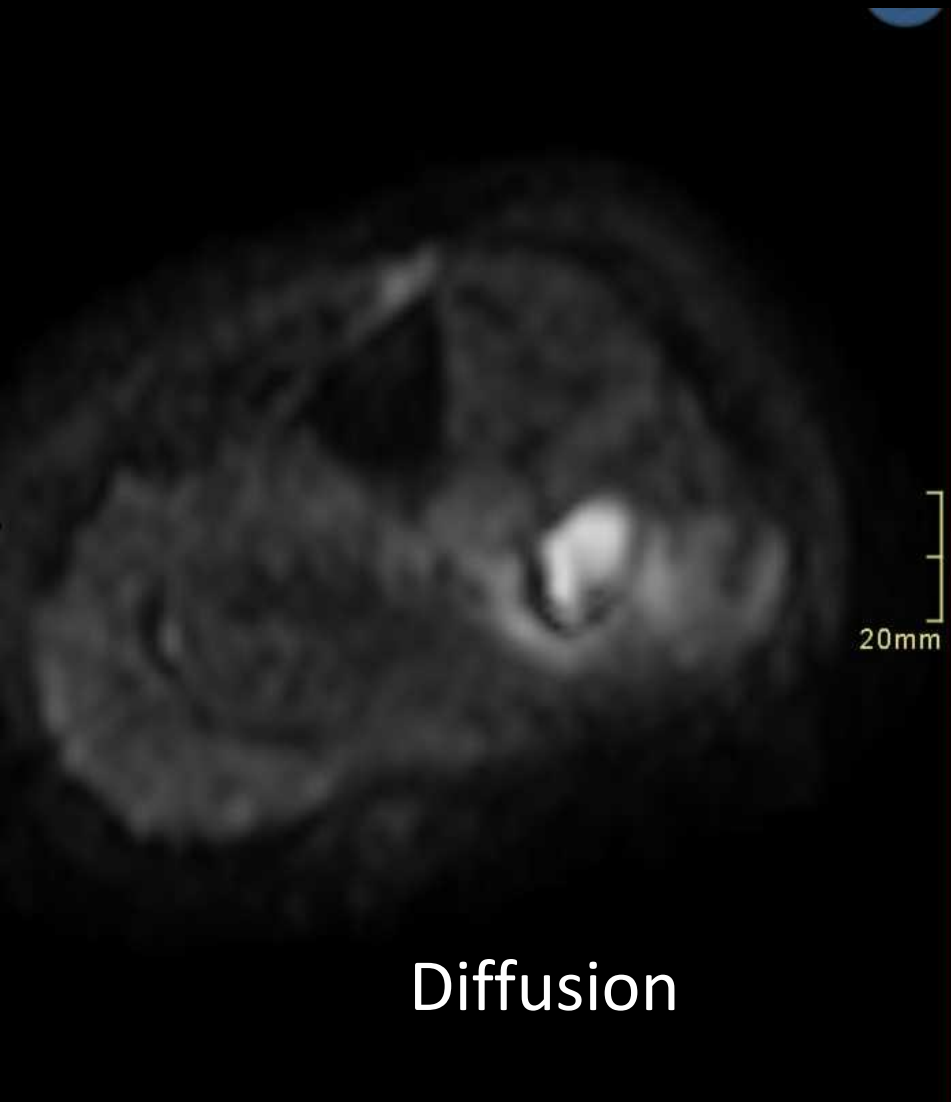
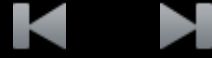
STIR



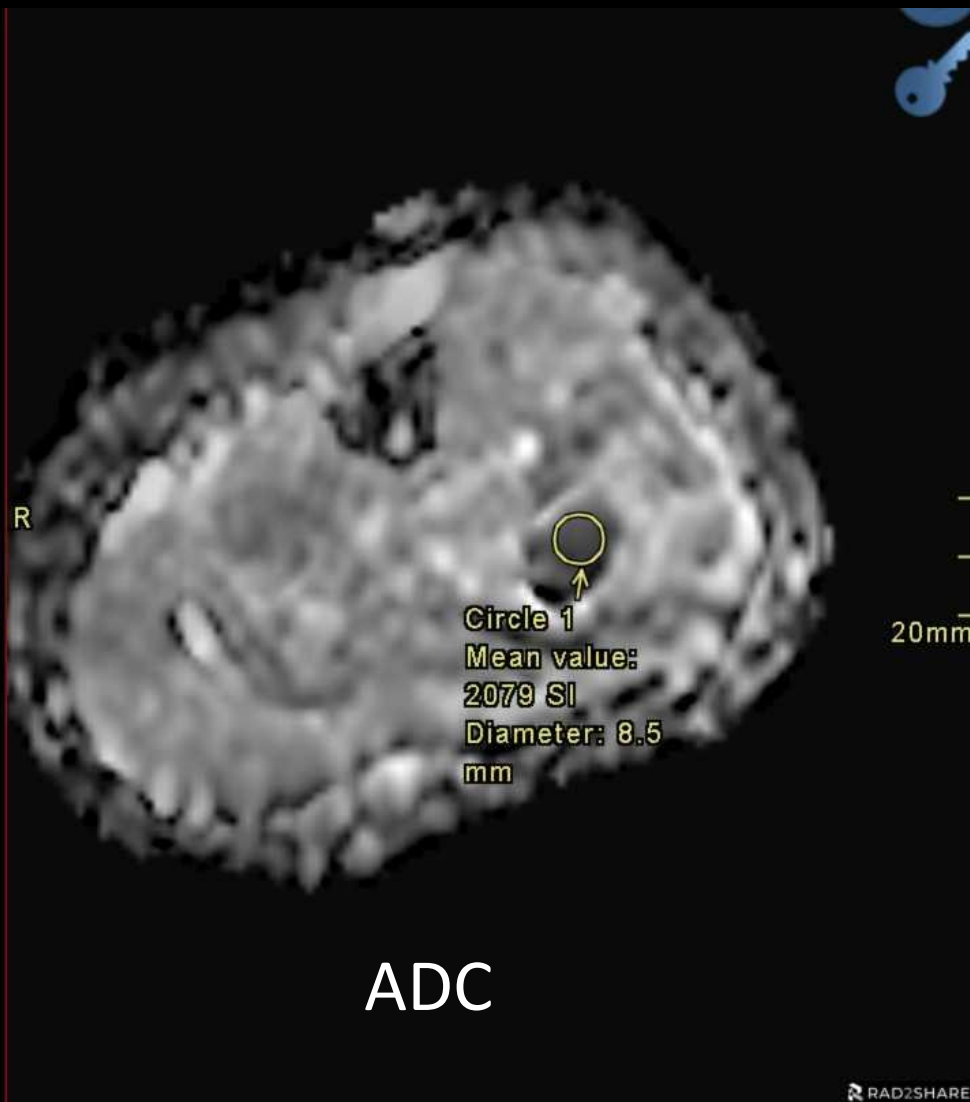
T1



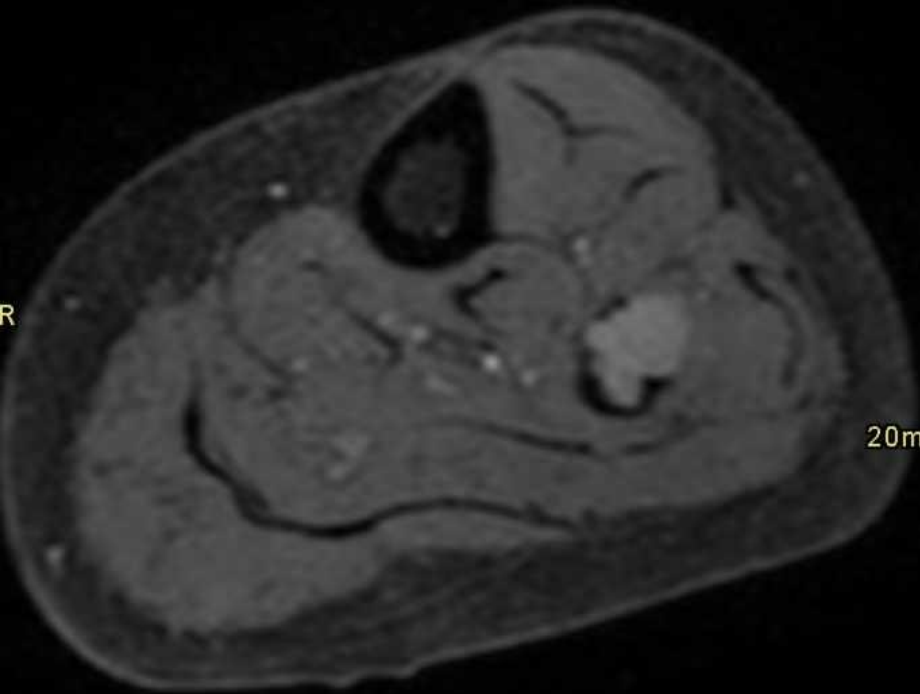
T2



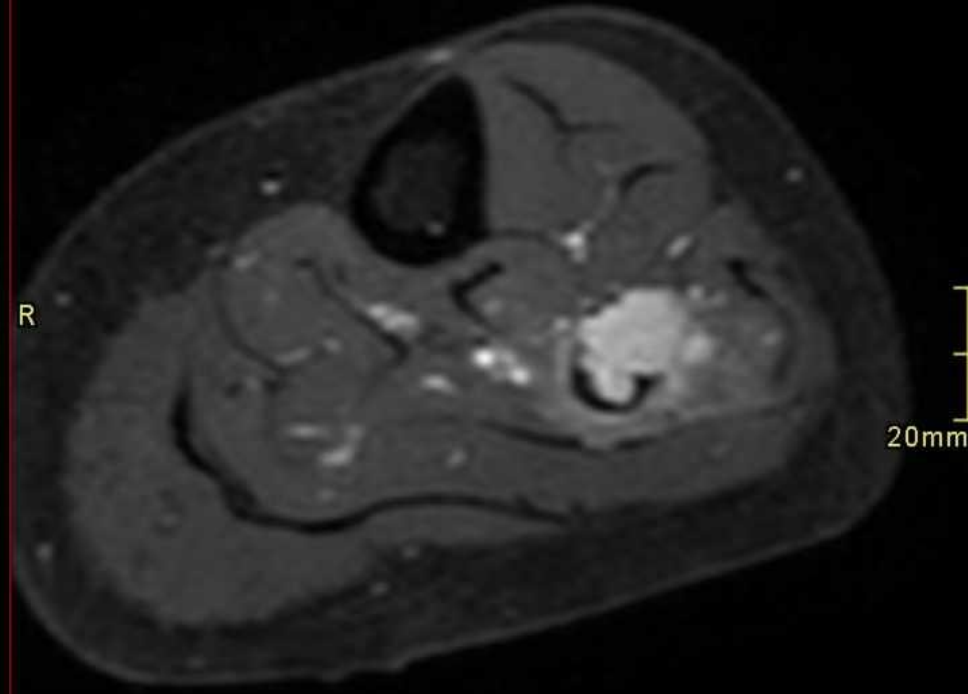
Diffusion



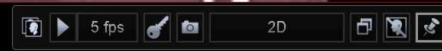
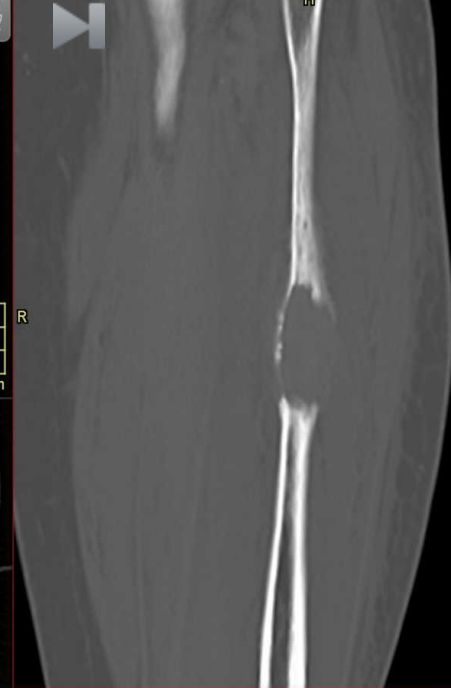
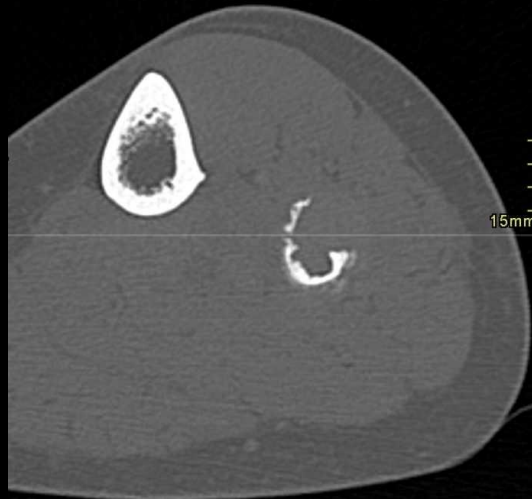
ADC



T1 fat sat



T1 fat sat + Gad



A
20mm