

42M with R hand/wrist pain

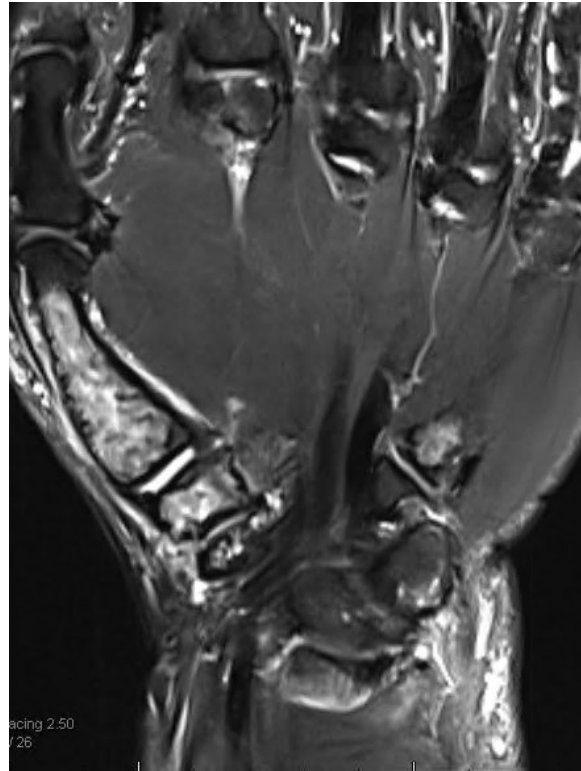
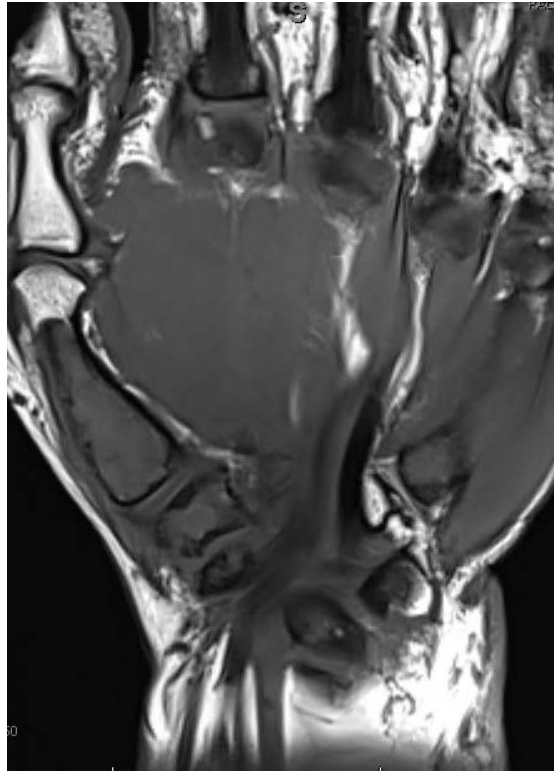
h/o T10 spinal cord injury

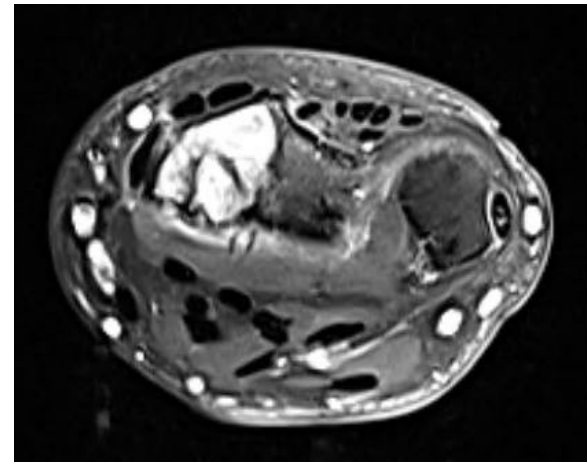
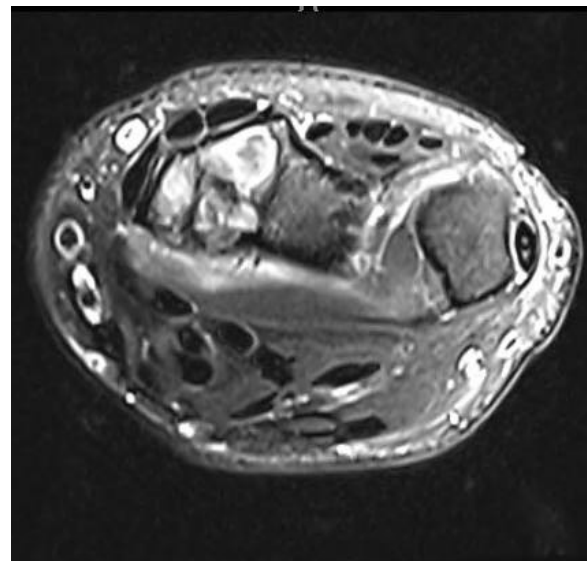
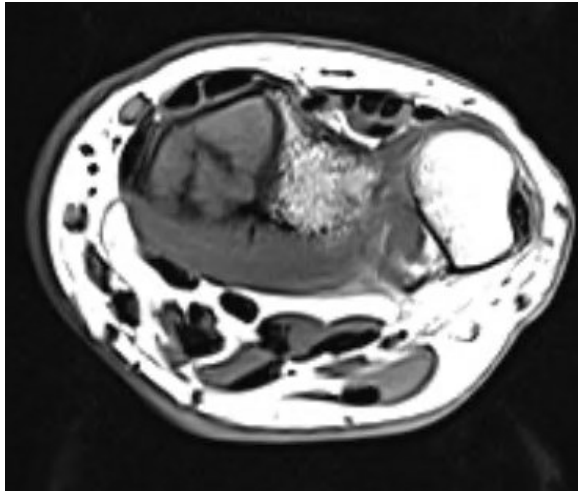
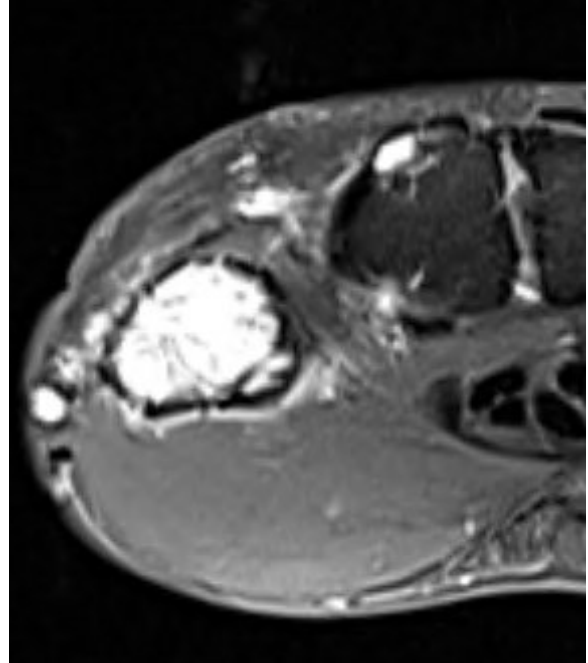
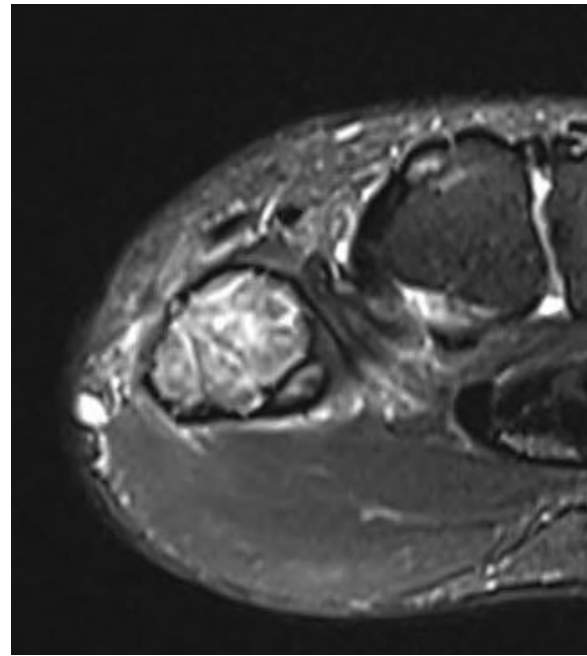
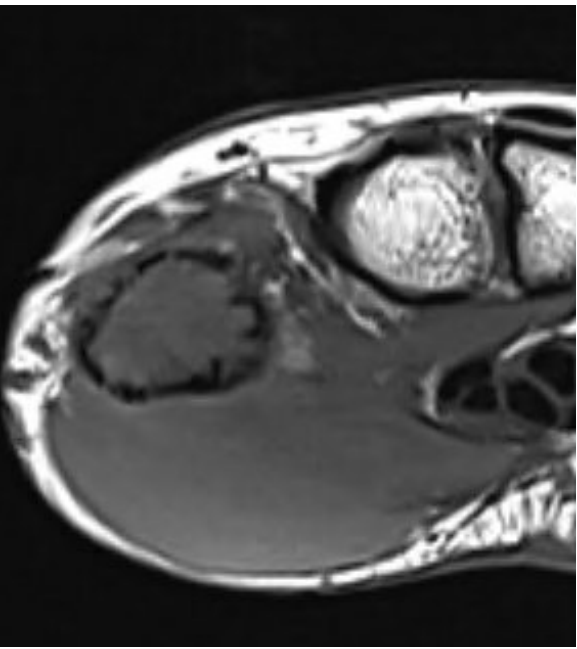




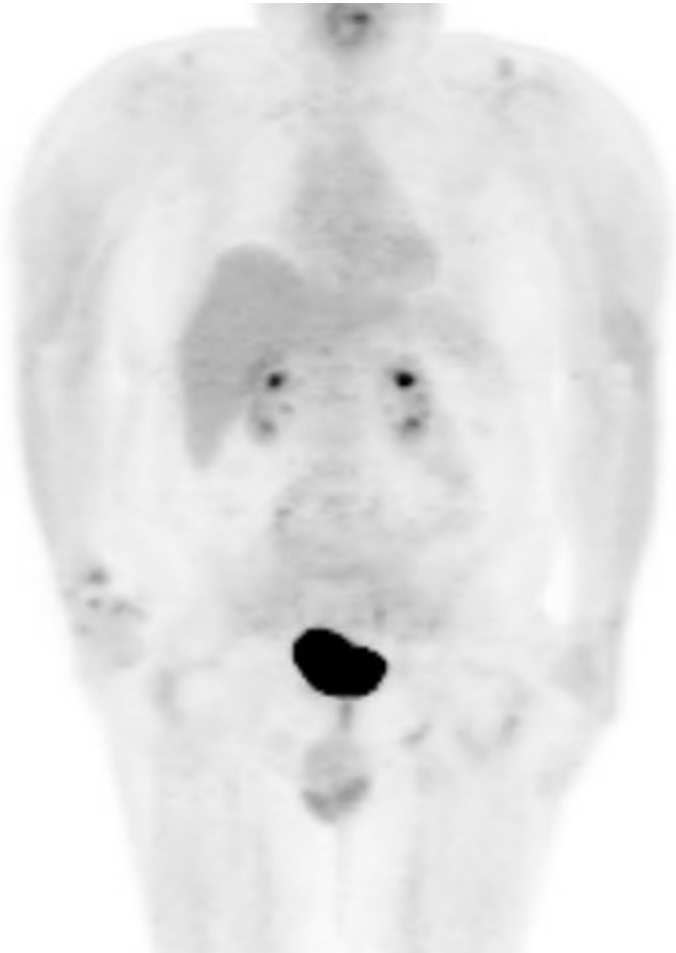
# T1, T2FS, T1+







FDG PET, no other lesions/primary



- Essentially normal CBC, BMP
- Biopsy performed:

COMMENT: Histologic sections show a cellular but cytologically bland proliferation that appears to form vascular spaces and channels. No necrosis, mitotic activity or significant nuclear pleomorphism is seen. Immunohistochemical stains show that the tumor cells express markers of vascular differentiation, including CD31, CD34 and ERG and do not show STAT6 or high molecular weight cytokeratin staining. The morphologic and immunophenotypic features are those of a cytologically bland vascular proliferation and appear to best support diagnosis of a benign neoplasm such as epithelioid hemangioma. Clinical and radiologic correlation is



- Working diagnosis: epithelioid hemangioma  
AKA Angiolymphoid hyperplasia with  
eosinophilia.